

USA
2020 V.1

AVANT[®]

Loaders and attachments



Foreword

This catalog contains most of the Avant loaders and attachments available from Avant Tecno USA at the date of printing.

Avant has a policy of continuing product development and retains the right to change specifications without notice.

Operation of certain attachments may require specific equipment on the loader. Please consult your local Avant dealer.

Compatibility tables between attachments and loader models are advisory. All attachments do not fit on all loader models. Please contact your local Avant dealer to make sure that the attachment is compatible with your Avant loader.



Table of Contents

Foreword	2	Receiver hitch.....	33
Table of Contents	3	Tool box.....	33
Avant concept	6	Rear guard.....	34
Avant Customers	7	Work light kit, on ROPS frame.....	34
		Work light kit, on cab LX.....	34
		Road traffic light kit.....	35
LOADERS		Beacon.....	35
Loaders and options	8-21	Beacon light bar.....	35
200 series.....	8	Cab L.....	36
400 series.....	10	Rear wall.....	36
500 series.....	12	Front window.....	36
600 series.....	14	Cab LX.....	37
700 series.....	16	Cab DLX.....	37
800 series.....	18	Cab GT.....	38
e series.....	20	Linex panels.....	38
		HD cover plates.....	39
OPTIONS		Snow chains.....	39
Options	22-45	Mudguards rear.....	40
Tire options, on a new machine.....	22	Suspension seat.....	40
Telescopic boom.....	25	Full suspension seat.....	40
Boom self levelling.....	25	Engine heater.....	41
Boom floating, machine without self levelling.....	25	Exhaust purifier.....	41
Boom floating, machine with self levelling.....	26	Hand drive controls.....	41
Smooth drive (boom suspension).....	26	Rear carrier.....	42
Hydraulic attachment coupling plate.....	26	Battery pack e5.....	42
Joystick 6 functions.....	27	Tie down bracket on wheel hub.....	42
Joystick 8 functions.....	27	Tie down bracket in the rear/on the sides.....	43
Opticontrol.....	27	Lifting kit, for machines with ROPS frame.....	43
Control switch pack for rear mounted attachments.....	28	Lifting kit, for machines with cab LX/DLX.....	43
Adapter cable for attachment control switch pack.....	28	Weather cover.....	44
Auxiliary hydraulics outlet in the rear, single acting.....	28	Transport cover.....	44
Auxiliary hydraulics outlet in the rear, double acting.....	29	Loading ramps.....	44
Second auxiliary hydraulics outlet in the front.....	29	Adapter cable 12V.....	45
Drive release valve.....	29	Adapter plug 12V.....	45
Anti slip valve.....	30	Rapid battery charger, e5.....	45
Back weight.....	30		
Rear side weights 176 lbs.....	30		
Rear side weights 400 lbs.....	31		
Wheel weight.....	31		
Light rear bumper.....	31		
Attachment mounting plate in the rear.....	32		
Hydraulic rear lift.....	32		
Trailer coupling.....	33		

Table of Contents

ATTACHMENTS

Buckets, material handling.....46-63

General bucket.....	46
Heavy duty general bucket.....	47
Light material bucket.....	48
XL Light material bucket.....	49
4 in 1 bucket.....	50
High tip bucket.....	51
XL high tip bucket.....	52
Grapple bucket.....	53
Demolition grapple bucket.....	54
Levelling bucket.....	55
Pallet fork.....	56
Pallet fork with side shift.....	57
Skip bucket.....	58
Jib boom.....	59
Telescoping jib boom.....	60
Hydraulic trailer hitch.....	61
Ball hitch on front.....	61
Beehive mover.....	62
Site toolbox.....	63

Property maintenance.....64-84

Dozer blade 1400.....	64
Dozer blade 2000/2500.....	65
Snow plow.....	66
V-Snow blade.....	67
Flipper bucket.....	68
Zoom snow plow.....	69
Ice rink scraper blade.....	70
Snow blower.....	71
Rotary broom.....	72
Collecting broom 1100.....	73
Collecting broom 1500.....	74
Bucket broom.....	75
High pressure washer.....	76
Artificial turf attachment.....	77
Artificial turf maintenance brush.....	78
Sand/salt spreader.....	79
Centrifugal sand/salt spreader.....	80
Towable sand/salt spreader.....	81
Vacuum brush.....	82
Leguan 50 Access platform.....	83
Tipping trailer.....	84

Groundcare.....85-98

Lawn mower 1200.....	85
Lawn mower 1500.....	86
Collecting lawn mower 1200.....	87
Collecting lawn mower 1500.....	88
Cutting bar.....	89
Flail mower.....	90
Flail mower with hydraulic side arm.....	91
Hydraulic side arm S30.....	92
Mechanical side arm S30.....	92
Flail mower S30.....	93
Cutting bar S30.....	93
Rotary hedge cutter S30.....	94
Multi function drive unit S30.....	95
Edge trimmer.....	96
Lawn aerator.....	97
Weed brush.....	98

Landscaping.....99-110

Rotary hoe.....	99
Power rake.....	100
Rotary harrow.....	101
Leveller HD.....	102
Roller compactor.....	103
Front rake.....	104
Ripper.....	105
Mulcher CRI400.....	106
Screening bucket.....	107
Mounting kit for stone installation clamp..	108
Stone grab.....	109
Grabbing tool.....	110

Table of Contents

Digging and construction..... 111-126

Backhoe 170.....	111
Backhoe 210.....	112
Backhoe 260.....	113
Backhoe 260 with remote control.....	114
Mini digger.....	115
Multi function drive unit.....	116
Attachments for multi function drive unit.....	117
Auger.....	118
Trencher.....	119
Hydraulic breaker.....	120
Asphalt spreader.....	121
Asphalt grinder.....	122
Concrete mixing bucket.....	123
Vibrating plate.....	124
Drum type concrete mixer.....	124
Disc scraper.....	125
Submersible pump.....	126

Farming and horse stables..... 126-148

All-round grapple.....	126
Silage fork.....	127
XL silage grab.....	128
Silage dozer blade.....	129
Feeding table cleaning blade.....	130
Silage dispenser.....	131
Feed mover screw.....	132
Silage block cutter.....	133
Carousel broom.....	134
Round bale grab.....	135
Bale handler.....	136
Bale fork.....	137
Round bale splitter.....	138
Bedding distributor bucket.....	139
Manure fork.....	140
Grain/flour dispenser bucket.....	140
Grain/flour dispenser bucket XL.....	141
Push broom.....	142
3 point hitch adapter.....	143
Horse manure collector.....	144
Front cultivator.....	145

Horse arena harrow.....	146
Big bag transporter.....	147
Stone collecting bucket.....	148

Power Packs..... 149

Compressor.....	149
Pressure washer.....	149

Tree removal..... 150-157

Winch.....	150
Tree shear.....	151
Log grab, heavy duty.....	152
Log grab.....	153
Timber grab.....	154
Timber grab HD.....	155
Root Grapple.....	156
Stump grinder.....	157

Options..... 158-162

Tilt adapter.....	158
Attachment rotator.....	158
Hydraulic side shift adapter.....	159
Side shift adapter.....	159
Disclaimer for Avant adapters.....	160
Skid steer adapter.....	160
Adapter plate/attach bracket.....	160
Multi Connector System.....	161
Drawbar.....	161
Hydraulic manifolds to attachment multi connector..	162

Filter kits..... 163

Wheels & Tires..... 164

Options in alphabetical order..... 165

Attachments in alphabetical order... 166



AVANT®

Avant's advantages in power, efficiency, versatility and value are driven by our robust features. Our compact articulated design uses less horsepower to do most jobs-that means less surface impact and lower operating costs.

- Excellent weight to lift ratio
- Avant increases productivity, saving time and manpower
- Minimal surface impact
- Articulated, compact design
- Low operating cost
- Offset telescopic boom
- Easy to operate
- 360 operator visibility
- Hundreds of attachments

Avant Customers



Landscaping

Avant is a versatile landscaper's tool that will cover all your landscaping and maintenance needs. Articulated steering and light frame reduce ground damage saving time and money on jobs.



Construction & demolition

Avant loaders can take care of various jobs in different stages of the construction project in new building projects, renovations or demolition.



Tree removal

Avant is powerful enough to lift heavy logs, yet compact enough to fit in tight nooks, small yards and narrow pathways. Avant loaders have less surface impact therefore laying down protective mats is unnecessary allowing you save time and money.



Sidewalk snow removal

Avant's compact size allows you to fit on 48" sidewalks making snow removal easier and more efficient.



Municipalities

Avant loaders are already used by many Municipalities, Park Districts, and Universities across the United States. With hundreds of attachments to choose from, there is a tool for every job.



Farming

Avant loaders can take care of all the physically challenging jobs on the farm that used to have to be done manually. A versatile tool for all the work on the farm.

AVANT[®] 200

200 series



Model	AVANT 220	AVANT 225
Length	75.2 in	75.2 in
Width*	39.2 in	39.2 in
Height	74 in	74 in
Weight	1540 lb	1540 lb
Wheels	20x8.00-10 tractor/grass	20x8.00-10 tractor/grass
Transmission, drive	hydrostatic	hydrostatic
Pulling force	1395 lbf	1440 lbf
Drive speed (max.)	6.2 MPH	6.2 MPH
Auxiliary hydraulics	7.9 gal/min/2680 PSI	11.1 gal/min/2680 PSI
Hydraulic oil cooler	standard	standard
Turning radius inside/outside**	35.8 / 75.2 in	35.8 / 75.2 in
Tipping load***	772 lb	772 lb
Engine	Kohler CV640	Kohler ECV730 EFI
Engine output	20 hp	25 hp
Fuel	Gasoline	Gasoline
Product no:	A21675	A21687

* 40.4 in. with optional wheel spacers

** Turning radius with Standard tires

*** Load is measured at 15.8 in from the attachment coupling plate.



Avant 200 series

- Avant quick attach system for attachments
- Boom Float
- Multi connector for hydraulic attachments
- Multi function display: hour meter and fuel gauge, engine indicators, road traffic light indicators
- Large 4.7 gal fuel tank
- Large 47 Ah battery
- Automatic drive release valve
- LED front lights
- Avant 225 with 25 hp electronic fuel injection gasoline engine starts easily in any situation, no choke needed
- Auxiliary hydraulics oil flow to hydraulically driven attachments as high as 11.1 gal/min

Options

- Suspension seat with arm rests and heater
- Joystick 6 functions: auxiliary hydraulics control with buttons on joystick
- Cab L: windscreen with wiper and washer, right side and rear windows – door also available as an option

- Anti slip valve
- LED work light kit: 2 front, 1 rear
- Road traffic kit
- Auxiliary hydraulics outlet in the rear
- Attachment control switch pack for electric functions on attachment
- Wheel weights

Safety

- Longer wheelbase and lower center of gravity – better stability
- Certified ROPS safety frame and FOPS canopy
- Seat belt
- LED front lights as standard, extra LED work light kit (2 front, 1 rear, 700 lumen) available as an option
- Excellent, unrestricted field of vision to the attachment and working environment

AVANT[®] 400

400 series



Width

Wheel size	Profile	Machine width
5.70-12	TR	36.7 in
23 x 8.50 - 12	TR or grass	41.3 in
23 x 10.50 - 12	TR or grass	43.1 in

Model	AVANT 423
Length	86.4 in
Width	36.7 - 43.1 in
Height	78 in
Weight	2380 lb
Standard wheels	23x8.50-12" TR or grass
Transmission, drive	hydrostatic
Pulling force	1500 lbf
Drive speed (max.)	7.5 MPH
Auxiliary hydraulics oil flow / pressure	9.0 gal/min 2680 PSI
Hydraulic oil cooler	Standard
Turning radius inside/outside*	34.6 / 77.6 in
Tipping load**	1210 lb
Max. breakout force	1430 lbf
Engine make and type	Kubota D902
Engine output	22 hp
Maximum torque	41 lbf-ft @ 2200 rpm
Fuel	Diesel
Product no:	A424315

* Turning radius with Standard tires

** Load is measured at 15.8 in from the attachment coupling plate, unit with rear sideweights.

AVANT® 400

400 series



Avant 423

- Equipped with Kubota 22 hp diesel engine – more horsepower and torque especially on low revs
- Auxiliary hydraulics oil flow, 9 gal/min

Standard specification

- Telescopic boom
- Joystick 6 functions: auxiliary hydraulics control with buttons on joystick
- Multi connector system for hydraulic attachments
- Hydraulic oil cooler
- Certified ROPS safety frame + FOPS canopy
- 2 front LED work lights (1000 lumen)
- Hydrostatic 4WD
- Standard tyres 23x8.50-12 Traction or Grass profile
- Standard 'Avant Green' seat with seat belt
- 5.3 gal fuel tank

Options

- Suspension seat with arm rests and heater
- Cab L: windscreen with wiper and washer, right side and rear
- Anti slip valve
- LED work light kit: 2 front, 1 rear
- Road traffic kit
- Auxiliary hydraulics outlet in the rear
- Opticontrol attachment control system for attachments with electric and hydraulic functions
- Narrow spec of 36.7 inches with 5.70-12 tires
- Extra counterweights



AVANT[®] 500

500 series



Height with Cab

Wheel size	26x12.00-12 or 320/60-12	27x8.50-15
Cab L	80.1 in	80.6 in
Cab LX	79.7 in	80.2 in
Cab DLX	80.5 in	81.0 in

* With 23" wheels machine is 0.6 in lower

Width

Wheel size	Profile	Machine width
27 x 8.50 - 15*	TR	40.6 in/ 44.6 in
23 x 8.50 - 12	TR or grass	42.5 in
23 x 10.50 - 12	TR or grass	44.5 in
320/60-12 HD*	TR	50.8 in
26 x 12.00 - 12*	TR or grass	50.8 in
26.5 x 14.00 - 12**	grass	55.9 in

* Bigger wheels will increase total machine height by 0.8-1.4 in

** Requires 1.6 in spacers on the wheel hubs

Model	AVANT 523	AVANT 528	AVANT 530
Length	96.1 in	101.2 in	101.2 in
Width (with 23x10.50-12 wheels)	44.5 in	44.9 in	44.9 in
Height	78.2 in	78.2 in	78.2 in
Weight	3020 lb	3130 lb	3220 lb
Standard wheels	23x10.50-12" TR or grass	23x10.50-12" TR or grass	23x10.50-12" TR or grass
Transmission, drive	hydrostatic	hydrostatic	hydrostatic
Pulling force	1985 lbf	2100 lbf	2315 lbf
Drive speed (max.)	7.5 MPH	7.5 MPH	12 MPH
Auxiliary hydraulics oil flow / pressure	9.0 gal/min 2680 PSI	9.5 gal/min 2900 PSI	9.5 gal/min 2900 PSI
Hydraulic oil cooler	Standard	Standard	Standard
Turning radius inside/outside*	39.2 / 80.7 in	39.2 / 80.7 in	39.2 / 80.7 in
Max. lifting height	110 in	110 in	110 in
Tipping load**	1750 lb	2100 lb	2100 lb
Max. breakout force	2425 lb	2800 lb	2800 lb
Engine make and type	Kubota D902	Kubota D1105	Kubota D1105
Engine output	22 hp	25 hp	25 hp
Maximum torque	41 lbf-ft @ 2200 rpm	53 lbf-ft @ 2200 rpm	53 lbf-ft @ 2200 rpm
Fuel	Diesel	Diesel	Diesel
Product no:	A21741	A424277	A424278

* Turning radius with 23x10.50-12 wheels

** Load is measured at 15.8 in from the attachment coupling plate, unit with rear sideweights.



Avant 523

- Equipped with Kubota 22 hp diesel engine – more horsepower and torque especially on low revs
- Higher auxiliary hydraulics oil flow, 9.0 gal/min

Avant 528/530

- Kubota 25 hp diesel engine
- Auxiliary hydraulics oil flow, 9.5 gal/min
- 528 max speed 7.5 mph
- 530 dual speed 12 mph max
- Avant 528 most popular North American model

Standard specification

- Strong piston type Poclain drive motors
- Telescopic boom
- Joystick 6 functions: auxiliary hydraulics control with buttons on joystick
- **OPTIBRIVE™** drive system - more power to drive and to attachment hydraulics
- Multi connector system for hydraulic attachments
- Hydraulic oil cooler
- Certified ROPS safety frame + FOPS canopy
- 2 front LED work lights (1000 lumen)
- Hydrostatic 4WD
- Standard tyres 23x10.50-12 Traction or Grass profile
- Suspended Heated 'Avant Green' Seat with seat belt & hand rests
- Integrated back weight 375 lb
- Fuel tank size 7.9 gal
- 9.5 gal hydraulic oil tank

AVANT[®] 600

600 series



Height with Cab

Wheel size	26x12.00-12 or 320/60-12	27x8.50-15
Cab L	80.1 in	80.6 in
Cab LX	79.7 in	80.2 in
Cab DLX	80.5 in	81.0 in
Cab DLX with Air conditioning on the roof	85.9 in	86.4 in

* With 23" wheels machine is 0.6 in lower

Width

Wheel size	Profile	Machine width
27 x 8.50 - 15*	TR	40.6 in 44.6 in
23 x 8.50 - 12	TR or grass	42.5 in
23 x 10.50 - 12	TR or grass	44.5 in
26 x 12.00 - 12	TR or grass	50.8 in
320/60 - 12	TR	50.8 in
26.5 x 14.00 - 12**	grass	55.9 in

* Bigger wheels will increase total machine height by 0.5 in

** Requires 1.6 in spacers on the wheel hubs

Model	AVANT 630	AVANT 635	AVANT 640
Length	101.2 in	101.2 in	101.2 in
Width (with 26x12.00-12 wheels)	50.8 in	50.8 in	50.8 in
Height	80.1 in	80.1 in	80.1 in
Weight	3310 lb	3370 lb	3500 lb
Standard wheels	26x12.00-12" TR or grass	26x12.00-12" TR or grass	26x12.00-12" TR or grass
Transmission, drive	hydrostatic	hydrostatic	hydrostatic
Pulling force	2650 lbf	2650 lbf	3100 lbf
Drive speed (max.)	8.7 MPH	8.7 MPH	12.4 MPH
Auxiliary hydraulics oil flow / pressure	11.6 gal/min 2900 PSI	13.2 gal/min 2900 PSI	13.2 gal/min 2900 PSI
Hydraulic oil cooler	Standard	Standard	Standard
Turning radius inside/outside*	35.4 / 97.2 in	35.4 / 97.2 in	35.4 / 97.2 in
Max. lifting height	112 in	112 in	112 in
Max. tipping load**	2440 lb	2560 lb	2620 lb
Max. breakout force	2760 lbf	2760 lbf	2760 lbf
Engine make and type	Kubota D 1105, 3-cyl.	Kubota V1505, 4-cyl.	Kubota V1505, 4-cyl.
Engine output	25 hp	26 hp	26 hp
Maximum torque	53 lbf-ft @ 2200 rpm	69 lbf-ft @ 1700 rpm	69 lbf-ft @ 1700 rpm
Fuel	Diesel	Diesel	Diesel
Product no:	A424286	A433088	A433089

* Turning radius with 26x12.00-12 wheels

** Load is measured at 15.8 in from the attachment coupling plate, unit with rear sideweights.



Avant 600 series advantages over 500 series

- More lift capacity and handling power
- Stronger and faster hydraulic system
- 8 function joystick
- 630 equipped with Kubota 25 hp diesel engine
- 635 and 640 equipped with Kubota 26 hp diesel engine
- More oil flow for attachments, Dual pump with 11.6 gal/min (630) / 13.2 gal/min (635/640)
- DLX Cab with Heat and A/C available (635/640)
- Avant 635 max speed 8.7 mph, 640 max speed 12.4 mph

Standard specification

- Telescopic boom
- **OPTIDRIVE™** drive system - more power to drive and to attachment hydraulics
- Strong piston type Poclain drive motors
- Multi connector system for hydraulic attachments
- Fast ground speed, max 12.4 mph (640)
- Drive release valve
- Hydraulic parking brake
- Certified ROPS safety frame + FOPS canopy
- 2 front head lights (1000 lumens)
- Hydrostatic 4WD
- Standard tires 26x12-12 Traction or Grass profile
- Heated suspension seat with arm rests and seat belt
- Integrated back weight 375 lb
- Fuel tank size 7.9 gal.
- 10 gal hydraulic oil tank

AVANT 700

700 series



Height with Cab

Wheel size	26x12.00-12 320/60-12	320-55/15*
Cab L	81.1 in	82.4 in
Cab LX	81.8 in	83.1 in
Cab DLX	82.9 in	84.2 in
Cab DLX with Air conditioning on the roof	88.2 in	89.6 in

*) With 400/50-15 machine is 1.2 in higher

Width

Wheel size	Profile	Machine width	
		735/755i	760i
27x8.50-15	TR	40.6 in	42.5 in 46.6 in
26x12.00-12	TR or grass	50.8 in	53.1 in
320/60-12 HD	TR	50.8 in	53.1 in
320/55-15	TR or grass	51.4 in	53.5 in
400/50-15	TR or grass	-	57.1 in

Model	AVANT 735	AVANT 755i	AVANT 760i
Length	120.9 in	120.9 in	120.9 in
Width (standard tires)	51 in	51 in	57.1 in
Height	82.3 in	82.3 in	84.3 in
Weight, starting from	3970 lb	4420 lb	4640 lb
Standard tires	26/12.00-12 Grass, 320/60-12 Tractor		400/50-15 TR or grass
Transmission	Hydrostatic	Hydrostatic	Hydrostatic
Pulling force	2650 lbf	2990 lbf	3600 lbf
Drive speed	8.7 MPH	10.6 mph	16.2 mph
Auxiliary hydraulics	13.2 gal/min 2900 PSI	21.1 gal/min 3260 PSI	21.1 gal/min 3260 PSI
Turning radius (inside/outside)*	49.2 / 105.3 in	49.2 / 105.3 in	49.2 / 105.3 in
Lifting height	122.0 in	122.0 in	122.0 in
Tipping load**	3810 lb	3810 lb	3810 lb
Max. breakout force at 20 in	3750 lbf	3750 lbf	3750 lbf
Engine make and type	Kubota V1505, 4-cyl.	Kohler KDI 1903 TCR	Kohler KDI 1903 TCR
Engine output	26 hp	57 hp	57 hp
Maximum torque	69 lbf-ft @ 1700 rpm	166 lbf-ft @ 1500 rpm	166 lbf-ft @ 1500 rpm
Fuel	Diesel	Diesel	Diesel
Product no:	A439072	A21728	A21730

* With standard wheels

** Load is measured at 15.8 in from the attachment coupling plate, unit with rear sideweights.



AVANT[®] 700

700 series

Avant 735

New

- Similar lift height and lift capacity as on 755i and 760i - excellent, economical lifting and handling machine

Avant 700 series advantages over 600 series

- More lift capacity and handling power
- Stronger boom construction
- More oil flow for attachments, max. 21.1 gal/min
- Greater lifting height, up to 122 in
- Avant 755i and 760i with Kohler KDI 1903 TCR turbocharged common rail diesel engine complies with Tier 4 Final emission regulations without need for diesel exhaust fluid (DEF) or active regeneration of the particulate filter (DPF)

Standard specification

- Telescopic boom
- **OPTIBRIVE™** drive system - more power to drive and to attachment hydraulics
- Strong piston type Poclain drive motors on all models
- Two drive speed areas (760i)
- Multi connector system for hydraulic attachments
- 8 function joystick
- Drive release valve
- Hydraulic parking brake
- Certified ROPS safety frame + FOPS canopy
- 2 front head lights (1000 lumens)
- Hydrostatic 4WD
- Avant 760i with dual speed up to 16.2 mph, Avant 755i with single speed up to 10.6 mph
- Standard tires: Avant 760i 10-stud 400/50-15 grass or TR profile, Avant 735/755i 5-stud 320/60-12 TR or 26x12.00-12 grass profile
- Heated suspension seat with arm rests and seat belt
- Integrated back weight 375 lb
- Fuel tank size 10.5 gal.
- 10 gal hydraulic oil tank

AVANT[®] 800

800 series



Height

Wheel size	380/55 - 17 TR
ROPS	86.6 in
Cab GT	87.8 in

Model	AVANT 860i
Length	133.7 in
Width (with standard wheels)	58.7 in
Height (with standard wheels)	86.6 in
Weight	5600 lb
Standard wheels	380/55-17" TR or grass
Transmission, drive	hydrostatic
Pulling force max.	4630 lbf
Drive speed max.	18.6 mph
Auxiliary hydraulics	21.1 gal/min 3260 PSI
Turning radius inside/outside*	53.9 in / 117.7 in
Lifting height to pivot point	137.8 in
Max. tipping load**	4190 lb
Max. breakout force / 50 cm	4850 lb
Engine make and type	Kohler KDI 1903 TCR
Engine output	57 hp
Maximum torque	166 lbf-ft @ 1500 rpm
Fuel	diesel
Product no:	A2175 I

* With standard wheels

** Load is measured at 15.8 in from the attachment coupling plate, unit with rear sideweights.



Avant 800 series

- Handling capacity up to 4190 lb
- Strong boom construction with two tilt cylinders
- Lifting height 137.8 in to hinge pin
- Oil flow for attachments max. 21.1 gal/min, twin pump
- Cab with air conditioning available
- Air suspension seat for cab available
- Big 17" wheels as standard
- Avant quick attach system as standard
- Kohler KDI 1903 TCR turbocharged common rail diesel engine complies with Tier 4 Final emission regulations without need for diesel exhaust fluid (DEF) or active regeneration of the particulate filter (DPF)

Standard specification

- Telescopic boom
- Boom self levelling
- Boom floating
- **OPTIDRIVE™** drive system - more power to drive and to attachment hydraulics
- Strong piston type Poclain drive motors on all models
- Two drive speed areas
- Hydrostatic 4WD
- Multi connector system for hydraulic attachments
- Joystick 8 functions
- Drive release valve
- Hydraulic parking brake
- Certified ROPS safety frame + FOPS canopy
- 2 front LED work lights (1000 lumen)
- 10-stud wheel hub, standard tyres 380/55-17" traction
- Full suspension heated seat with seat belt & hand rests
- Integrated back weight 600 lb
- Fast travel speed: 18.6 mph



e series



Width

Wheel size	Profile	Machine width
27 x 8.50 - 15*	TR	40.6 in/ 44.6 in
23 x 8.50 - 12	TR or grass	42.5 in
23 x 10.50 - 12	TR or grass	44.5 in
320/60-12 HD*	TR	50.8 in
26 x 12.00 - 12*	TR or grass	50.8 in
26.5 x 14.00 - 12**	grass	55.9 in

* Bigger wheels will increase total machine height by 0.8-1.4 in

** Requires 1.6 in spacers on the wheel hubs

Model	AVANT e5
Length	96.1 in
Width (with 23x10.50-12 wheels)	44.5 in
Height (with 23x10.50-12 wheels)	78.2 in
Weight	3620 lb
Standard wheels	23x10.50-12" TR
Transmission, drive	hydrostatic
Drive speed max.	6.2 MPH
Auxiliary hydraulics oil flow / pressure	7.9 gal/min
Hydraulic oil cooler	Standard
Turning radius inside/outside*	39.2 / 80.7 in
Max. lifting height	110 in
Tipping load**	2000 lb
Max. breakout force / 50 cm	2425 lb
Battery type	AGM (Absorbent Glass Mat)
Battery capacity	13,6 kWh
Fuel	Electric
Product number	A433127

* Turning radius with 23x10.50-12 wheels

** Load is measured at 15.8 in from the attachment coupling plate, unit with rear sideweights.



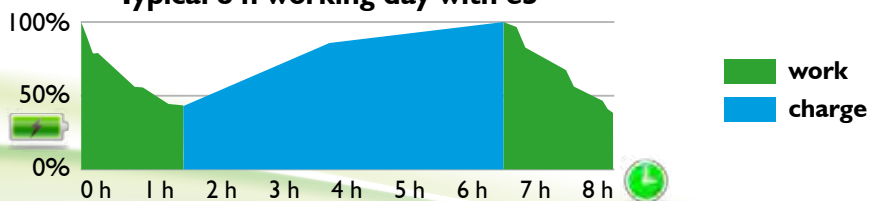
Avant e5

- Battery driven, 100% full electric
- AGM (Absorbent Glass Mat) battery, maintenance free. AGM battery is a lead acid battery where the electrolyte is held in glass mats – very thin glass fibers are woven into a mat which increases surface area enough to hold sufficient electrolyte on the cells for their lifetime
- 285 Ah / 13,6 kWh battery capacity

Standard features

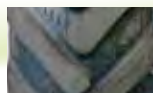
- No exhaust emissions, very low noise
- Hydrostatic 4WD, strong piston type Poclain drive motors
- **OPTIBRIVE™** drive system - more power to drive and to attachment hydraulics
- Auxiliary hydraulics oil flow max. 7.9 gal/min
- Multi connector system for hydraulic attachments
- Joystick 6 functions: auxiliary hydraulics control with buttons on joystick
- Hydraulic oil cooler, telescopic boom, drive release valve, hydraulic parking brake
- Suspended Heated 'Avant Green' Seat with seat belt & hand rests
- Certified ROPS safety frame + FOPS canopy
- 2 front LED work lights (1000 lumen)

Typical 8 h working day with e5



Tire options, on a new machine

Options



20 x 8.00 - 10

200 series

TR

MW20810T

200 series

Grass

MW20810G

220	225	423	523	528	530	630	635	640	735	755i	760i	860i	e5



5 x 10

400 series

TR

MW6.510T

220	225	423	523	528	530	630	635	640	735	755i	760i	860i	e5



5.70-12

423 manufactured from week 20/2020

TR

MW5.5712T

220	225	423	523	528	530	630	635	640	735	755i	760i	860i	e5



23 x 8.50-12

423 manufactured until week 19/2020

Grass MW6.238512G

423 manufactured from week 20/2020, 500-, 600-, e-series

TR MW5.238512T

423 manufactured from week 20/2020, 500-, 600-, e-series

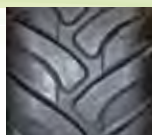
Grass MW5.238512G

220	225	423	523	528	530	630	635	640	735	755i	760i	860i	e5

 Standard

 Option

 Not available



23 x 10.50-12

423 manufactured until week 19/2020

TR MW6.2310512T

423 manufactured until week 19/2020

Grass MW6.2310512G

423 manufactured from week 20/2020

TR MW5.2310512T

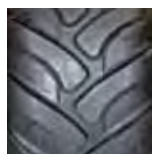
423 manufactured from week 20/2020, 500-, 600-, e-series

Grass MW5.2310512G



220	225	423	523	528	530	630	635	640	735	755i	760i	860i	e5

Options



26 x 12.00-12

500, 600, 700, e-series

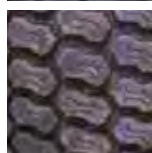
Grass

MW10.261212G

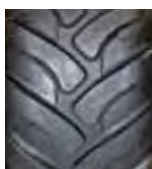
500, 600, 700, e-series

TR

MW10.261212T



220	225	423	523	528	530	630	635	640	735	755i	760i	860i	e5



320/60 - 12 HD

500-, 600 series

TR

MW10.3206012T

220	225	423	523	528	530	630	635	640	735	755i	760i	860i	e5



27 x 8.50-15

500, 600, 700, e-series

TR

MW10.278515T

220	225	423	523	528	530	630	635	640	735	755i	760i	860i	e5



Standard



Option



Not available



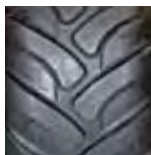
26.5 x 14.00-12

500 - 600 Series

Grass

MWI0.26514I2G

220	225	423	523	528	530	630	635	640	735	755i	760i	860i	e5



320/55-15 HD

755i

Grass

MWI0.3205515G

755i

TR

MWI0.3205515T



220	225	423	523	528	530	630	635	640	735	755i	760i	860i	e5



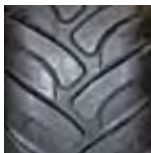
400/50-15

760i

Grass

MWI0.4005015G

220	225	423	523	528	530	630	635	640	735	755i	760i	860i	e5



380/55-17

860i

TR

MWI0.3805517T

860i

Grass

MWI0.3805517G



220	225	423	523	528	530	630	635	640	735	755i	760i	860i	e5



Standard



Option



Not available

Telescopic boom



Telescopic boom gives more outreach and lifting height, which helps loading and reaching a lot. It is also easy to adjust the distance between the front wheels and the attachment with the telescopic boom, and you can also push the loader with the teleboom if necessary. Depending on model, telescopic boom gives 15.7-27.6 in more outreach, and the extra lifting height is about 15.7 in.

220	225	423	523	528	530	630	635	640	735	755i	760i	860i	e5

Self levelling boom



Self levelling system keeps the position of the attachment the same in relation to the ground, regardless of the position of the boom. Self levelling is hydraulic: there is a levelling cylinder on the left side of the boom which follows the movements of the bucket tilt cylinder and keeps the attachment level. Self levelling is disabled when boom floating is switched on. Avant 200 series is equipped with a self levelling boom as standard. The self levelling system is mechanical.

220	225	423	523	528	530	630	635	640	735	755i	760i	860i	e5

Boom float, machine without self levelling



Boom float system releases the lift cylinder so that the boom moves freely upwards from the position where it is when boom floating is switched on, allowing the attachment to follow the contours of the ground.

200 series A421697
400 series A47773

220	225	423	523	528	530	630	635	640	735	755i	760i	860i	e5

Standard
 Option
 Not available

Boom float, machine with self levelling

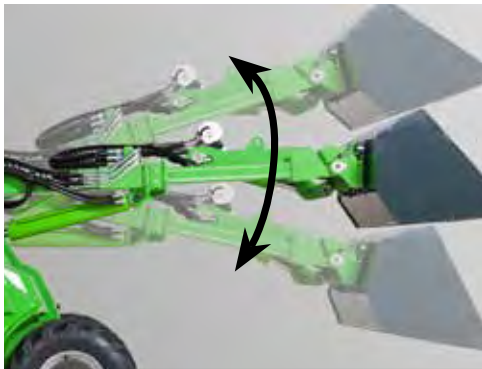


Boom float can also be installed on machines with boom self levelling. The boom floating valve bypasses boom self levelling, which means that boom self levelling doesn't work when boom floating is switched on.

500-700 and e series A34015

220	225	423	523	528	530	630	635	640	735	755i	760i	860i	e5

Smooth drive (boom suspension)



Smooth drive is a shock absorber system for the boom. When driving at high speed with a heavy load or heavy attachment the boom starts to move up and down, making driving bumpy. Smooth drive consists of an accumulator which absorbs and eliminates boom movements and makes driving considerably smoother and more stable. Smooth drive requires boom self levelling and boom floating on the loader.

500 series A424825
600 series A35830
700 series A35719
800 series A434866

220	225	423	523	528	530	630	635	640	735	755i	760i	860i	e5

Hydraulic attachment coupling plate



The hydraulic attachment coupling plate enables coupling and disconnecting of the attachment from driver's seat. There is a hydraulic cylinder on the attachment coupling plate which moves the locking pins up and down.

500-600-, e-series A430622
700 series manufactured thru September 2020 A34956
700 series manufactured after September 2020 A430622
800 series A434867

220	225	423	523	528	530	630	635	640	735	755i	760i	860i	e5

Standard Option Not available

Joystick 6 functions



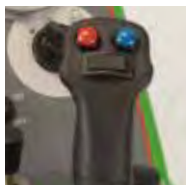
On the 6 function joystick the operation of auxiliary hydraulics (hydraulically driven attachments) happens with two buttons on the joystick. This makes work faster and more comfortable, because you don't need to move your hand from the joystick to the auxiliary hydraulics control lever when operating the attachment, and you can also lift the boom and tilt the attachment at the same time if necessary.

200 series

A36785

220	225	423	523	528	530	630	635	640	735	755i	760i	860i	e5

Joystick 8 functions



On the 8 function joystick both the auxiliary hydraulics and the telescopic boom can be controlled with the switches on the joystick. This speeds up both loading and working with hydraulic attachments.

220	225	423	523	528	530	630	635	640	735	755i	760i	860i	e5

Opticontrol



Opticontrol makes it possible to operate both the electric and the hydraulic functions of the attachment with the rocker switches on the control switch pack. This requires the 6 or 8 function joystick on the loader. Opticontrol speeds up the operation of attachments which have two or more hydraulic functions and an electric solenoid valve for selecting those functions. It consists of the control switch pack which mounts on the boom control lever and a selector switch which mounts on the dashboard of the loader. When the switch is in OFF position, electric functions of the attachment (e.g. electric turning of the rotary broom, electric water spraying pump of collecting broom, electric selector valve etc.) are controlled with the rocker switches on the control switch pack. When the switch is in ON position, all hydraulic functions of the attachment are controlled with the rocker switches on the control switch pack (e.g. hydraulic rotator and hydraulic cylinder of the timber grab, independent operation of the wings of the flipper bucket & snow plows, functions on the mounting kit for stone installation clamp etc.). This means the operator can keep the hand on the joystick and control all functions of the attachment smoothly and comfortably. If the loader is not equipped with the 6/8 function joystick, only the electric functions of the attachment are operated with the switches on the control switch pack. Opticontrol can also be retrofitted on a machine already equipped with the control switch pack.



200 series

A36880

400-800, e series

A36878

Opticontrol retrofit kit, for loaders with attachment control switch pack
A437338

220	225	423	523	528	530	630	635	640	735	755i	760i	860i	e5

Standard

Option

Not available

Control switch pack for rear mounted attachments

Options



Electric functions of rear mounted attachments can be controlled with this control switch pack. It is necessary, for instance, for operating the 700 series hydraulic rear lift A427547 and the attachment mounted on it (e.g. sand spreaders A427150 and A424325). Other applications: operation of the electric water pump on the A37065 water spraying system of the horse arena harrow, and A37301 electric spreading adjustment of the centrifugal sand/salt spreader. The switch pack is equipped with a strong magnet and can be fastened in a suitable place in the cockpit, for instance on the dashboard. The electric socket is mounted in the rear of the loader.

Control switch pack for rear mounted attachments A431588

220	225	423	523	528	530	630	635	640	735	755i	760i	860i	e5

Adapter cable for attachment control switch pack



Avant loaders manufactured before 2016, where the socket of the attachment control switch pack is not on the multi connector can be retrofitted with an adapter cable. It mounts on the multi connector, and the electric wire from the attachments control switch pack is connected to this adapter cable. The attachment can also be retrofitted with a corresponding adapter cable if necessary, see back page. With this updated adapter cable both the electric wire and the hydraulic hoses are connected at the same time with the multi connector.

Adapter cable A36869

220	225	423	523	528	530	630	635	640	735	755i	760i	860i	e5

Auxiliary hydraulics outlet in the rear, single acting



Single acting rear auxiliary hydraulics is equipped with one pressure line. It makes it possible to operate hydraulic attachments with single function.

400 series A34636
500 series A35882
600 series A34014
e series A434878

220	225	423	523	528	530	630	635	640	735	755i	760i	860i	e5

Standard

Option

Not available

Auxiliary hydraulics outlet in the rear, double acting



Double acting rear hydraulics is equipped with pressure and return line (on 400-700 series also with tank line), and it makes it possible to operate rear mounted hydraulic attachments like tipping trailer, sand spreader etc.

200 series	A36871*
400 series	A34632
500 series	A35881
600 series	A47774
e series	A434521
700-, 800 series	A434872
* not with hand drive	

220	225	423	523	528	530	630	635	640	735	755i	760i	860i	e5

Second auxiliary hydraulics outlet in the front



In addition to the standard auxiliary hydraulics outlet in the front, equipped with multi connector, the loader can be equipped with an extra double acting outlet which mounts under the multi connector. It is double acting (pressure-return) and equipped with conventional quick couplers. If the extra front outlet is installed, rear auxiliary hydraulics outlet is not possible, and vice versa.

400 series,	A35504
500-, e series	A35884
600 series	A35462
700 series	A35477
800 series	A434870

220	225	423	523	528	530	630	635	640	735	755i	760i	860i	e5

Drive release valve



The drive release valve diverts the oil flow between the left and right side hydraulic drive motors, and this has an effect on the pulling force. When the valve is open the hydraulic oil flows in series from motor to motor. The wheels roll freely and the loader leaves less tire marks on soft and sensitive surfaces. When the valve is closed, the hydraulic oil flows in parallel between the hydraulic motors on each side, similar to a differential lock in operation. This improves traction and towing capacity of the loader.

220	225	423	523	528	530	630	635	640	735	755i	760i	860i	e5



Standard



Option



Not available

Anti slip valve

Options



The anti slip valve positively diverts oil flow between the right and left side hydraulic drive motors (forces the oil to flow to both right and left side drive motors) and improves traction on slippery and uneven surfaces. The function of the anti slip valve depends also on the drive release valve: when the drive release valve is closed the anti slip valve diverts oil flow to the drive motors on all four wheels. When the drive release valve is open the anti slip valve diverts the oil flow between the front wheels only.

200 series	A49548
400 series	A34753
500-, 600 series	A424303
700 series	A37362
800 series	A434868
e series	A422257

220	225	423	523	528	530	630	635	640	735	755i	760i	860i	e5

Back weight



The extra 64 lbs counterweight mounts on the rear bumper. It is equipped with handle and fastening hooks, so it is easy to just drop the weight on the bumper, and also to connect the weights on each other. Trailer couplings A417323 and A417337 can also be mounted on the weight.

Back weight	A35957
-------------	--------

220	225	423	523	528	530	630	635	640	735	755i	760i	860i	e5

Rear side weights 176 lbs



Rear side weights mount behind the rear wheels. They are delivered in pair: one on the left and one on the right side. Weight of the kit is 176 lbs, and it is intended mainly fo 400 series, but can be mounted on bigger Avants as well.

Rear side weights 176 lbs	A36401
---------------------------	--------

220	225	423	523	528	530	630	635	640	735	755i	760i	860i	e5

Standard Option Not available

Rear side weights 400 lbs



Rear side weights mount behind the rear wheels. They are delivered in pair: one on the left and one on the right side. Weight of the kit is 400 lbs.

Rear side weights 400 lbs A49063

220	225	423	523	528	530	630	635	640	735	755i	760i	860i	e5

Wheel weight



Avant 200 series can be equipped with 31 lbs wheel weights which mount on the rim with special bolts. They make the center of gravity of the machine lower and add weight, which improves the stability of the loader.

200 series A46584

220	225	423	523	528	530	630	635	640	735	755i	760i	860i	e5

Light rear bumper



Avant 500 and 600 series are equipped with the 400 lbs rear bumper as standard, but if a lighter machine is required – for instance when driving on surfaces with limited carrying capacity – the light rear bumper can be installed instead of the standard bumper. It reduces total machine weight by about 330 lbs.

Light rear bumper A36887

220	225	423	523	528	530	630	635	640	735	755i	760i	860i	e5



Standard



Option



Not available

Attachment mounting plate in the rear

Options



Attachment mounting plate in the rear is mainly intended for mounting the sand spreaders A427150 and A424325 in the rear of the machine. On 700 and 800 series also the centrifugal spreader A21183 can be mounted on it. The plate is a rigid vertical plate which doesn't tilt. The mounting plate for 528/530 and 600 series is equipped with two bolts for fastening the attachment whereas the 700 & 800 series plate is fitted with the Avant quick attach system and also with hydraulic quick couplers and hydraulic hoses in case the hoses of the attachment are not long enough to reach the optional rear auxiliary hydraulics outlet on the loader. When mounting hydraulic attachments, the loader must be equipped with the optional double acting rear auxiliary hydraulics outlet.

528, 530 and 600 series	A433267
700 series	A441613
800 series	A441666

220	225	423	523	528	530	630	635	640	735	755i	760i	860i	e5

Hydraulic rear lift



This hydraulic rear lift mounts on Avant 700 and 800 series only. It is mainly intended for the sand/salt spreaders A427150 & A424325, and can be mounted on 700 series machines manufactured from January 2019, and all 800 series machines. The rear lift can be tilted down max. 95°, which means that the sand spreader can be tilted down to horizontal position and filled directly from the sand pile by reversing with the machine. The rear lift requires the optional double acting rear auxiliary hydraulics outlet and the control switch pack for rear mounted attachments on the loader. Selection between operation of rear lift / attachment is made with the switch pack, and the rear lift/attachment is operated with auxiliary hydraulics control lever (or buttons on the joystick, if fitted). Hydraulic cylinders are equipped with check valves which make sure that the rear lift cannot move inadvertently.

700 series	A427547
800 series	A438490

220	225	423	523	528	530	630	635	640	735	755i	760i	860i	e5

☐ Standard ☒ Option ☐ Not available

Trailer coupling



There are two types of trailer couplings available: a 2 inch ball hitch and a 2 inch ball hitch with towing pin. Both can be mounted either directly on the rear bumper or on the extra back weight. Avant 200 series is equipped with a 2 inch ball hitch as standard.

- Ball hitch
- A417323
- Ball hitch with towing pin
- A417337

220	225	423	523	528	530	630	635	640	735	755i	760i	860i	e5

Receiver hitch



Rear mounted 2 inch receiver hitch.

- 400-800 series
- A438011

220	225	423	523	528	530	630	635	640	735	755i	760i	860i	e5

Tool box



The lockable tool box mounts on the rear bumper.

- 700 series
- A36573

220	225	423	523	528	530	630	635	640	735	755i	760i	860i	e5



Standard



Option



Not available

Rear guard

Options



The rear guard protects the rear and the radiator of the engine. It mounts with four bolts and is easy to install and take off. The rear guard is equipped with tie down brackets and allows mounting of back weights and/or trailer coupling at the same time.

Rear guard A36572

220	225	423	523	528	530	630	635	640	735	755i	760i	860i	e5

Work light kit, on ROPS frame



The work light kit consists of three LED lights: 2 to the front, 1 to the rear. Two types of LED lights available: 700 lumen or 2500 lumen.

200 series, 700 lumen A36866
400-800 and e series, 700 lumen A33916
400-800 and e series, 2500 lumen A34917
Work light kit with red lights (for beekeepers)
400-800 and e series, 400 lumen A432730

220	225	423	523	528	530	630	635	640	735	755i	760i	860i	e5

Work light kit, on cab LX



The work light kit can also be mounted on cab LX, with the same 700 lumen or 2500 lumen lights.

500-700 series, 700 lumen A35732
500-700 series, 2500 lumen A35731

220	225	423	523	528	530	630	635	640	735	755i	760i	860i	e5

Standard Option Not available

Road traffic light kit



The road traffic light kit consists of headlights, blinkers, reflectors, slow moving vehicle sign (triangle) and beacon. When mounted on the ROPS frame the road traffic light kit of 400-800 and e series also includes the rear wall. It enables road traffic registration in certain countries. Requirements vary in different countries, please consult your local Avant distributor. Road traffic kit is installed to LX cabs at the factory, on cab DLX it is standard.

200 series	A36773
400 series	A34614
500-600 series, on ROPS	A33912
e series, on ROPS, LED	A434812
700 series, on ROPS	A34235
800 series, on ROPS	A433228
500-600 series, on cab LX	A35352
700 series, on cab LX	A35355
800 series, on cab	A438524
7-way trailer socket	A418817

220	225	423	523	528	530	630	635	640	735	755i	760i	860i	e5

Beacon



The rotating warning beacon is equipped with a very bright LED lamp. It mounts on a tiltable socket and is easy to install and take off.

200 series	A421008
400-800 series	A34002
e series	A438358

220	225	423	523	528	530	630	635	640	735	755i	760i	860i	e5

Beacon light bar



The beacon light bar is available for cab DLX only, instead of the rotating warning beacon.

Beacon light bar	A36739
------------------	--------

220	225	423	523	528	530	630	635	640	735	755i	760i	860i	e5

Standard

Option

Not available

Cab L

Options



Avant cab L is an excellent and economical choice when the operator wants to have protection against rain, wind and snowfall. It improves operator comfort and working conditions considerably. The cab mounts on the standard ROPS frame, which means safety is guaranteed. It consists of windscreen (equipped with wiper and washer), right side window and rear window.

200 series	A36681
Door, cab L 200 series	A37278
400 series	A34624
500-700 and e series	A21592
800 series	A439264

Installation of the Cab L on the 500 series requires the 2 inch taller 600/700 ROPS frame, A33920. Cab L is a factory only option on 500-800 series.

220	225	423	523	528	530	630	635	640	735	755i	760i	860i	e5

Rear wall



The rear wall mounts on the ROPS frame. It gives protection against wind and light rain.

400 series	A412299
500-700, e series	A49446
800 series	A439193

Rear wall requires the 2 inch higher 600/700 series ROPS frame on 500 series, A33920.

220	225	423	523	528	530	630	635	640	735	755i	760i	860i	e5

Front window



The front window mounts on the ROPS frame. It gives protection against wind and light rain.

500-700 and e series	A21676
----------------------	--------

Front window requires the 2 inch higher 600/700 series ROPS frame on 500 series, A33920.

220	225	423	523	528	530	630	635	640	735	755i	760i	860i	e5



Standard



Option



Not available

Cab LX



The cab LX provides the option of a heated cab. It has all the features of the L cab with addition of a door and a heater to further improve operator comfort in harsh weather conditions. For warmer seasons the door and windows can easily be removed if required. Front mudguards are standard equipment, rear mudguards are available as an option. Cab LX is an independent ROPS/FOPS structure and cannot be retrofitted.

500-700 series

A21517

220	225	423	523	528	530	630	635	640	735	755i	760i	860i	e5

Cab DLX



The top of the range cab DLX is equipped with heater, noise reducing interior materials, radio, cab air filter, LED work light kit, road traffic light kit, front and rear mudguards. Air conditioning, air suspension seat and beacon light bar are available as an option. A/C unit can be mounted either on the roof - or behind the rear window if a lower machine height is required. The spacious and ergonomic cab DLX represents modern cab design at its best.

Cab DLX, 500-600 series A21444

Cab DLX, 700 series A21465

Cab DLX, AC (Unit position rear) 635/640 A21463

Cab DLX, AC (Unit position roof) 635/640 A21511

Cab DLX, AC (Unit position rear) 700 series A21464

Cab DLX, AC (Unit position roof) 700 series A21510

Air suspension seat A413706

Back rest extension, on air suspension seat A437711

AC is available for 635,640 and 700 series.

220	225	423	523	528	530	630	635	640	735	755i	760i	860i	e5

Standard

Option

Not available

Cab GT

Options



The completely new cab GT for Avant 800 series is mounted with rubber mounts on the chassis, which means very low vibrations and noise level in the cab. Visibility to the rear wheels is better thanks to larger rear windows. The cab is equipped with heating, sound absorbing interior, fabric seat, mirrors, radio, windscreen washer/wiper, cab air filter, and mud guards front and rear as standard. Optional equipment include air conditioning, air suspension seat, road traffic kit, work light kit, 4-light beacon (2 pcs blinking LED lights above the windscreen, 2 pcs above the rear windows) and rotating beacon. Cab increases machine height by only 1.2 inches (height 87.8 in).



Cab GT	A436732
Work light kit on cab: 2 front, 1 rear, LED 700 lumen	A438528
Work light kit on cab: 2 front, 1 rear, LED 2500 lumen	A438539
Road traffic light kit, on cab	A438524
A/C on cab, cooler in the rear	A438326
Air suspension seat	A438053
Back rest extension, air suspension seat	A437711
Four-light beacon, on cab	A438538
(2 pcs LEDs above windscreen, 2 pcs above rear windows)	
Rotating beacon	A438530

220	225	423	523	528	530	630	635	640	735	755i	760i	860i	e5

Linux panels



- Extreme abrasion, chemical, corrosion, moisture and impact resistance.
- Inside and outside panel lined
- UV protectant
- 300 % Tougher than most hybrid products

423 Front Panels	Line-X-4xxF
423 Rear Panels	Line-X-4xxR
e5-500-700 ROPS Front Panels	Line-X-5xx-7xxRF
500-600 Rear Panels, No Mudguards	Line-X-5xx-6xxRNM
500-600 Rear Panels, w/ Mudguards	Line-X-5xx-6xxRMG
e5 Rear Panels	Line-X-E5R
500-700 Front Panels w/ Cab and 12" wheels	Line-X-5xx-7xx12CF
700 Front Panels w/ Cab and 15" wheels	Line-X-7xx15CF
700-800 Rear Panels, No Mudguards	Line-X-7xx-8xxRNM
700-800 Rear Panels, With Mudguards	Line-X-7xx-8xxRMG
860 Front ROPS Panels	Line-X-8xxRF
860 Front GT Cab Panels	Line-X-8xxCF

220	225	423	523	528	530	630	635	640	735	755i	760i	860i	e5

Standard
 Option
 Not available

HD cover plates

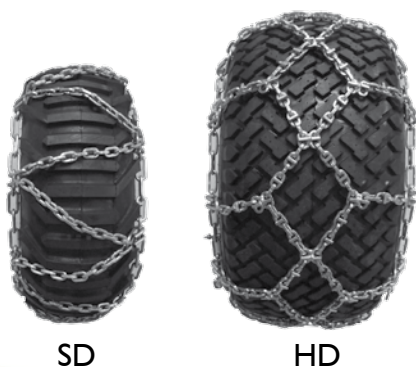


HD cover plates are made of extra shock resistant polycarbonate with great tensile strength. They can take the beating on the construction site and will even resist jumping on them. The HD covers are as shiny as the standard ABS covers. Additional price on a new loader, instead of standard cover plates.

423	A425274
523 ROPS frame	A425275
523 LX/DLX	A425276
528/530, 600 series ROPS, no rear mudguards	A36080
528/530, 600 series ROPS & rear mudguards	A36081
528/530, 600 series LX/DLX, no rear mudguards	A35670
528/530, 600 series LX/DLX & rear mudguards	A35669
e series	A439250
700 series ROPS, no rear mudguards	A36876
700 series ROPS & rear mudguards	A36875
700 series LX/DLX 12" tires, no rear mudguards	A424371
700 series LX/DLX 12" tires & rear mudguards	A36877
700 series LX/DLX 15" tires, no rear mudguards	A424379
700 series LX/DLX 15" tires & rear mudguards	A36483
800 series ROPS	A438664
800 series Cab	A438665

220	225	423	523	528	530	630	635	640	735	755i	760i	860i	e5

Snow chains



Snow chains are available for different tire sizes. They give excellent grip on slippery snowy and icy surfaces. Can be mounted on all four wheels or just on the front or rear axle. Delivered in a bag which includes 2 pcs chains.

5x10 TR, pair SD	64055
23x8.50-12, pair SD	64746
23x8.50-12, pair HD	64455
23x10.50-12, pair HD	64745
26x12.00-12, pair HD	64973
320/60-12, pair HD	65603
320/55-15, pair HD	65722
27x8.50-15, pair SD	65723

220	225	423	523	528	530	630	635	640	735	755i	760i	860i	e5

 Standard

 Option

 Not available

Mudguards rear

Options



Rear mudguards are available as an option on a new machine, they cannot be retrofitted.

528/530, 600 series* A35237

* With 26x12.00-12 and 320/60-12HD tires

700 series** A420520

** With 320/60-12HD, 320/55-15 and 400/50-15

800 series A437518

220	225	423	523	528	530	630	635	640	735	755i	760i	860i	e5

Suspension seat



Suspension seat is optional equipment on 200 and 400 series. It is equipped with arm rests, seat belt and heater.

200- and 400 series A2522

220	225	423	523	528	530	630	635	640	735	755i	760i	860i	e5

Full suspension seat



The full suspension seat with larger suspension is standard equipment on 600, 700, and 800 series. It is equipped with seat belt, arm rests and heater.

600-800 series 64853

220	225	423	523	528	530	630	635	640	735	755i	760i	860i	e5

☐ Standard ☐ Option ☐ Not available

Engine heater



Engine heater facilitates starting in low ambient temperatures and saves the engine and reduces fuel consumption when starting in the cold.

423/523, block	A435412
528, 530, 600 series, 735, block	A435413
755i, 760i and 860i, block	A435414

220	225	423	523	528	530	630	635	640	735	755i	760i	860i	e5

Exhaust purifier



Exhaust purifier can be mounted instead of the standard exhaust muffler. It reduces diesel engine emissions.

423, 523	A424843
528, 530, 600 series	A35513
735	A439833

220	225	423	523	528	530	630	635	640	735	755i	760i	860i	e5

Hand drive controls



Hand drive controls enables the forward-reverse driving of the loader with a switch on the joystick, instead of the drive pedals. The hand drive is proportional like the drive pedals: the more the switch is turned the faster the machine will travel. It is possible to use either the hand drive or the standard drive pedals; selection between hand drive and pedal control happens with a switch on the dashboard.

200 series	A37093
400-700 series	A37287

220	225	423	523	528	530	630	635	640	735	755i	760i	860i	e5

Standard Option Not available

Rear carrier

Options



The tiltable rear carrier mounts on the rear bumper with bolts.

Rear carrier A35453

220	225	423	523	528	530	630	635	640	735	755i	760i	860i	e5

Battery pack e5



Complete battery pack for Avant e5, AGM battery, 285 Ah, 48V.

Battery pack e5 A432383

220	225	423	523	528	530	630	635	640	735	755i	760i	860i	e5

Tie down bracket on wheel hub



The bracket makes it easier to tie down the loader on a trailer, truck etc. Two models: for 6-bolt wheel hub and for 5/10-bolt wheel hub.

6-bolt wheel hub A423161
5 and 10 bolt wheel hub A423091

220	225	423	523	528	530	630	635	640	735	755i	760i	860i	e5

Standard Option Not available

Tie down bracket in the rear/on the sides



The bracket can be mounted on rear bumper and/or behind the rear wheels. Makes it easier to tie down the loader on a trailer etc.

400-800 and e series A418746

220	225	423	523	528	530	630	635	640	735	755i	760i	860i	e5

Lifting kit, for machines with ROPS frame



The kit includes all necessary slings and instructions for lifting a loader equipped with ROPS frame.

200-800 and e series A418706

220	225	423	523	528	530	630	635	640	735	755i	760i	860i	e5

Lifting kit, for machines with cab LX/DLX/GT



The kit includes all necessary lifting chains, hooks, brackets and instructions for lifting a loader equipped with cab LX/DLX/GT.

500-800 series A417352

220	225	423	523	528	530	630	635	640	735	755i	760i	860i	e5

Standard Option Not available

Weather cover



Weather cover protects the cockpit against rain, snow, dust and dirt. The weatherproof cloth covers the entire instrument panel, steering wheel and driver's seat. The weather cover is delivered with an integrated pouch where the cover can be wrapped when not in use.

200 series 65435
400-800 and e series 65436

220	225	423	523	528	530	630	635	640	735	755i	760i	860i	e5

Transport cover



Protects the entire Avant loader during transports on an open trailer or truck. The material is black, robust and all-weather proof fabric which keeps the machine safe from rain, snow and dirt. Comes with a durable pouch.

200 series 65477
400-600- and e series 65478
700 series 65479

220	225	423	523	528	530	630	635	640	735	755i	760i	860i	e5

Loading ramps



The lightweight and durable aluminium ramps are easy to handle and they stay clean thanks to the open grid design.
Max. load is 4960 lb.

Loading ramps 65447

220	225	423	523	528	530	630	635	640	735	755i	760i	860i	e5

☐ Standard ☒ Option ☐ Not available

Adapter cable 12V



Connection cable, mounts on the 12V outlet on 400-800 series and 200 series I. Equipped with a connector where you can connect a cigarette lighter plug, for instance when using a mobile phone charger.

Adapter cable 12V 65645

220	225	423	523	528	530	630	635	640	735	755i	760i	860i	e5

Adapter plug 12V



Adapter plug to 12V outlet, mounts both on the smaller 12V outlet on 400-800 series and on the bigger outlet on 200 series. You can connect the electric wires of any 12V electric appliance (for instance a battery charger) to this adapter. Requires therefore some electrician skills.

Adapter plug 12V 66286

220	225	423	523	528	530	630	635	640	735	755i	760i	860i	e5

Rapid battery charger, e5



The rapid charger and stand is included with each e5 as standard equipment. An extra charging station is available as an option for either an additional site or if the original station becomes damaged. The rapid charger is mounted in a stand so that it is easy to move when necessary. The stand is equipped with the Avant quick attach bracket in the rear so it can easily be moved with the e5, forklift brackets in the bottom, and lifting lugs on top if it needs to be lifted by a crane. The charging station requires a 480V/3 phase connection for the US or a 600V/3 phase connection for Canada.

Charging Station e5ChrgStation

220	225	423	523	528	530	630	635	640	735	755i	760i	860i	e5



Standard



Option



Not available



General bucket

Avant general buckets are designed so that the operator can see the front edge of the bucket from the driver's seat, which means quick and easy loading and emptying. There are no reinforcement plates inside the bucket which would interfere when loading and emptying, and the sides open forward in a slight angle which guarantees easy and complete emptying of all kinds materials.

Length of the bucket has been optimized in order to give best possible breakout force. Sides open forward in a slight angle which guarantees easy and complete emptying of all kinds materials.

There are narrow holes at the upper end of the bucket which improve visibility and prevent stones from falling towards the operator.

Available with straight edge and with teeth. Teeth protection plate is also available.



Option:

Teeth protection plate 41.3 in A417347
Teeth protection plate 45.3 in A420132
Teeth protection plate 51.2 in A417320

- All round bucket, suitable for almost every shovelling job
- Excellent visibility to the edge of the bucket
- No reinforcement plates inside the bucket – easy filling and emptying
- High breakout force
- Strong cutting edge made of high tensile, abrasion resistant wear steel

Width	Edge	Struck Capacity	Heaped Capacity	Weight	Product no
35.4 in	Straight	5.3 cu ft	6.7 cu ft	137 lb	A36711
35.4 in	Teeth	5.3 cu ft	6.7 cu ft	159 lb	A36716
41.3 in	Straight	4.2 cu ft	5.3 cu ft	110 lb	A36702*
41.3 in	Straight	6.7 cu ft	8.5 cu ft	161 lb	A36710
41.3 in	Teeth	6.7 cu ft	8.5 cu ft	183 lb	A36780
45.3 in	Straight	7.4 cu ft	9.2 cu ft	172 lb	A36709
45.3 in	Teeth	7.4 cu ft	9.2 cu ft	201 lb	A36779
51.2 in	Straight	8.5 cu ft	10.6 cu ft	190 lb	A36698
51.2 in	Teeth	8.5 cu ft	10.6 cu ft	216 lb	A36778
53.1 in	Straight	8.5 cu ft	10.9 cu ft	199 lb	A36996
53.1 in	Teeth	8.5 cu ft	10.9 cu ft	225 lb	A36997

* A36702 is the general bucket for 200 series – the dimensions and weight match the lift capacity of 200 series. Wider general buckets can be used on 200 series as light material bucket.

220	225	423	523	528	530	630	635	640	735	755i	760i	860i	e5





Heavy duty general bucket

Avant heavy duty general buckets are available with widths starting from 51 inches. They are made of stronger materials, they are heavier and have more capacity than standard general buckets. This makes them ideal tools for harder earthmoving and material handling jobs, and the HD buckets are best suited for Avant 600, 700 and 800 series.

Other features are the same as on standard general buckets: good visibility to the edge of the bucket, the inside of the bucket is completely plain and the sides open forward in a slight angle which guarantees easy and complete filling and emptying of all kinds of materials.

- **Heavy duty bucket for more demanding earthmoving and material handling jobs**
- **Excellent visibility to the edge of the bucket**
- **No reinforcement plates inside the bucket – easy filling and emptying**
- **High breakout force**
- **Strong cutting edge made of high tensile, abrasion resistant wear steel**



Width	Struck Capacity	Heaped Capacity	Weight	Product no
51.2 in	10.9 cu ft	13.1 cu ft	278 lb	A36713
57.1 in	12.4 cu ft	14.8 cu ft	304 lb	A36712
63.0 in	13.8 cu ft	16.2 cu ft	331 lb	A36535
63.0 in	15.2 cu ft	21.2 cu ft	419 lb	A437578

220	225	423	523	528	530	630	635	640	735	755i	760i	860i	e5



Compatible



Adaptable



Incompatible



Light material bucket

Light material buckets are intended for handling of e.g. snow, saw dust, manure, wood chips and other light materials.

The bottom of a light material bucket is considerably longer and the sides are higher than on a general bucket, which speeds up the work a lot. There are no reinforcement plates inside the bucket which would interfere when loading and emptying, and the sides open forward in a slight angle which guarantees easy and complete emptying of all kinds materials.

- Fast and easy moving of light materials
- Excellent visibility to the edge of the bucket
- No reinforcement plates inside the bucket – easy filling and emptying
- High back of the bucket prevents material from falling over the rear edge and guarantees high volume
- Strong cutting edge made of high tensile, abrasion resistant wear steel



Width	Struck Capacity	Heaped Capacity	Weight	Product no
45.3 in	12.0 cu ft	15.2 cu ft	276 lb	A36715
51.2 in	13.8 cu ft	17.5 cu ft	298 lb	A36714

220	225	423	523	528	530	630	635	640	735	755i	760i	860i	e5





XL light material bucket

XL light material bucket is a large capacity bucket, best suited to Avant 600, 700 and 800 series. It is intended for loading and transporting of light materials like wood chips, mulch, snow etc. There are no reinforcement plates inside the bucket which would interfere when loading and emptying, and the sides open forward in a slight angle, which guarantees easy and complete emptying of all kinds of materials and in difficult conditions also.

- **Large volume**
- **No reinforcement plates inside the bucket**
- **Robust design**
- **Intended for bigger Avant loaders**
- **XXL bucket available for 800 series**



Width	Struck Capacity	Heaped Capacity	Weight	Product no
57.1 in	19.8 cu ft	25.1 cu ft	342 lb	A36703
63.0 in	21.5 cu ft	27.5 cu ft	585 lb	A36476
71.0 in	24.7 cu ft	31.8 cu ft	617 lb	A36343

XXL light material bucket for 800 series:

Width	Struck Capacity	Heaped Capacity	Weight	Product no
71.0 in	37.1 cu ft	45.9 cu ft	562 lb	A437601

Model	220	225	423	523	528	530	630	635	640	735	755i	760i	860i	e5
XL														
XXL														



Compatible



Adaptable



Incompatible



4 in 1 bucket

Efficient multi purpose bucket - can be used as a normal bucket as well as a dozer blade, leveler or a grab. The front part of the bucket opens with 2 hydraulic cylinders, located on the back side of the bucket, which enables dozing, levelling and picking of stones, tree stumps etc. Another benefit of the opening bottom is that the bucket can be emptied at a higher level by opening the bottom instead of tipping the bucket edge down.

Available with straight edge or with teeth.

- **All round tool for landscaping and groundcare**
- **A versatile bucket suitable for many different jobs at different stages on the work site**



Edge	Width	Struck Capacity	Heaped Capacity	Weight	Product no
straight	43.3 in	5.5 cu ft	7.8 cu ft	335 lb	A21245
straight	50.4 in	6.0 cu ft	8.5 cu ft	386 lb	A21156
straight	57.1 in HD	7.2 cu ft	10.6 cu ft	540 lb	A428472
straight	63.0 in HD	8.1 cu ft	11.8 cu ft	567 lb	A36906
teeth	43.3 in	5.5 cu ft	7.8 cu ft	357 lb	A21249
teeth	50.4 in	6.0 cu ft	8.5 cu ft	408 lb	A21184
teeth	57.1 in HD	7.2 cu ft	10.6 cu ft	567 lb	A428508
teeth	63.0 in HD	8.1 cu ft	11.8 cu ft	610 lb	A37248

220	225	423	523	528	530	630	635	640	735	755i	760i	860i	e5





High tip bucket

High tip bucket is the right choice when you need to reach higher and longer. The bucket is equipped with a hydraulic cylinder that pushes and tips the bucket over its front edge, which gives considerably more tipping height than with a normal bucket. Maximum tipping height with telescopic boom on 400, 500 and 600 series 124" and on 700 series 138" and on 800 series as high as 157".

- High tipping height
- Excellent for loose and light material loading



Width	Struck Capacity	Heaped Capacity	Weight	Product no
41.3 in	5.3 cu ft	6.7 cu ft	284 lb	A2631
50.4 in	12.4 cu ft	14.8 cu ft	353 lb	A2824

220	225	423	523	528	530	630	635	640	735	755i	760i	860i	e5



Compatible



Adaptable



Incompatible



XL high tip bucket

The XL high tip bucket has more loading volume - very useful when loading light materials. The bucket is an ideal tool for snow removal, loading of wood chips and for loading works on recycling plants etc.

Tipping of the bucket happens with two hydraulic cylinders – this means emptying is easy also with full load in the bucket.

- **Large volume bucket for efficient loading of light materials**
- **Tipping height as high as 157" (with 800 series)**



Width	Struck Capacity	Heaped Capacity	Weight	Product no
57.1 in	18.7 cu ft	24.0 cu ft	595 lb	A36841
70.9 in	29.0 cu ft	31.8 cu ft	730 lb	A21273

220	225	423	523	528	530	630	635	640	735	755i	760i	860i	e5



Compatible



Adaptable



Incompatible



Grapple bucket

Grapple bucket combines a normal bucket and a grapple and is therefore suitable for a multitude of jobs. It can be used for transporting and loading of branches, wood chips, compost, straw, manure, construction waste etc. It can also be used as a normal bucket with the grapple in the upright position.

- **Versatile bucket for handling of loose materials**
- **Larger XL models with two cylinders intended especially for 700 and 800 series**



Option:
Side plates, kit, for XL grapple buckets A439112

Width	Weight	Product no
35.4 in	287 lb	A36304
41.3 in	322 lb	A36316
51.2 in	370 lb	A36323

XL grapple bucket for 700 and 800 series:

Width	Weight	Product no
51.2 in	595 lb	A441963
57.0 in	635 lb	A441946
63.0 in	672 lb	A439086

Model	220	225	423	523	528	530	630	635	640	735	755i	760i	860i	e5
Standard														
XL														



Compatible



Adaptable



Incompatible



Demolition grapple bucket

The demolition grapple bucket with two hydraulic grapples (51.2 in) and one (35.4 in and 42.5 in) are strong and versatile attachment for handling of construction and demolition waste. Hydraulic cylinders and hoses & fittings are well protected against falling debris.

- **Versatile bucket with two hydraulic grapples (51.2 in) and one (35.4 in and 42.5 in), for demolition, construction and tree care industry**



Width	Weight	Product no
35.4 in	342 lb	A441014
42.5 in	465 lb	A37465
51.2 in	502 lb	A37535

220	225	423	523	528	530	630	635	640	735	755i	760i	860i	e5





Levelling bucket

Avant levelling buckets are built with heavy duty construction in mind. Levelling bucket has a sharp back edge which makes levelling easy when driving backward. Other features include a longer bottom, which enables the driver to see the tip of the bucket perfectly. This also makes levelling easier. The new levelling buckets are stronger and completely plain inside, which makes filling and emptying easier. They are also larger than the earlier models.

- **Excellent visibility to tip of bucket**
- **Sharp back edge enables exact levelling when driving backward**
- **Heavy duty design**
- **New models with more width and capacity**

Width	Struck Capacity	Heaped Capacity	Weight	Product no
57.1 in	8.8 cu ft	13.4 cu ft	386 lb	A36717
63.0 in	9.9 cu ft	14.8 cu ft	419 lb	A36706



220	225	423	523	528	530	630	635	640	735	755i	760i	860i	e5



Compatible



Adaptable



Incompatible



Pallet fork

Avant pallet fork is the right attachment for lifting and handling of different types of materials on pallets. Fork width can easily be adjusted thanks to the quick lock mechanism. The forks are made of high tensile forged steel and designed in accordance with the ISO2330 standard.

Avant is an excellent machine for load handling thanks to the precise steering and drive control. Compared with a conventional forklift truck Avant is superior when working outdoors and on terrains, be it winter or summer.



Option:

Bolt on back frame A36346

A441445 Rotation support, adjustable (prevents boxes from falling from the pallet fork when rotating & emptying them with the attachment rotator A424406)

- **Excellent field of vision both to the attachment and to the environment makes working with pallet forks precise and easy**
- **Pallet fork is a useful attachment for all material handling jobs**
- **Bolt on back frame is optional**
- **Can be tilted sideways and rotated with the optional tilt adapters and attachment rotator (see page 162)**

Model	Fork length	Max. load	Weight	Product no
Regular	33.5 in	2200 lb	198 lb	A21047
Long	43.3 in	3100 lb	255 lb	A21039
XHD	47.2 in	4400 lb	310 lb	A36589

220	225	423	523	528	530	630	635	640	735	755i	760i	860i	e5





Pallet fork with side shift

Hydraulic fork adjustment on the pallet fork makes it possible to move the forks further apart or closer to each other easily and comfortably from the driver's seat. The forks can also be moved to the left or to the right, making it possible to shift the load to the side of the machine - closer to a wall for example. All functions can be operated from the driver's seat. Pallet fork is equipped as standard with a foldable back frame which enables handling of larger loads and protects the driver from falling objects.

- **Hydraulic side shift and fork width adjustment**
- **Foldable back frame as standard**



Fork length	Max. load	Weight	Product no
43.3 in	2650 lb	381 lb	A36279

The optional attachment control switch pack is recommended on the loader.

220	225	423	523	528	530	630	635	640	735	755i	760i	860i	e5



Compatible



Adaptable



Incompatible



Skip bucket

The new skip buckets are much larger than the earlier buckets and more like skip containers, but can be transported and emptied easily with Avant. The bucket can be equipped with castor wheels as an option. With them the bucket can be moved and filled by hand effortlessly e.g. in horse stables, on factory floors and similar tight situations where driving with the loader is not necessary or possible. A full bucket can then be taken away and emptied with Avant.



Options:

A418506 Castor wheels, 4 pcs (will increase bucket height by 6.5 inches)

A420800 Castor wheels, pneumatic tires, 4 pcs will increase bucket height by 9.3 inches)

A420537 Supports, 4 pcs

A421005 Lifting brackets, 4 pcs

- Replace the waste bins on the site with the skip bucket – loading, transporting and emptying of the bucket is very easy with Avant
- Castor wheels available as an option (solid plastic wheels or pneumatic tires)
- Supports instead of wheels available as an option - they raise the rear and lower the front of the bucket by approx. 3.5 in, which makes it easier to empty e.g. a wheelbarrow into the bucket

Width	Volume	Weight	Product no
34.6 in	22.2 cu ft	254 lb	A36588
50.4 in	33.5 cu ft	320 lb	A36595

220	225	423	523	528	530	630	635	640	735	755i	760i	860i	e5





Jib boom

Avant jib boom is a simple and ingenious attachment: lifting and moving heavier loads in tight situations are not a problem any more when you have this jib boom on your Avant.

The jib boom is equipped with a rotating lifting hook. Maximum lifting height to the tip of the jib boom, with the telescopic boom of the loader extended, is about 177" (800 series).

- **Economical attachment, suitable for many different lifting jobs**
- **Connecting points on the boom increase lifting safety**



Lifting point distance from attachment plate	47.2 in
Total length	51.2 in
Width	21.7 in
Height	12.4 in
Weight	75 lb
Rated max load	1100 lb
Product no	A428481

220	225	423	523	528	530	630	635	640	735	755i	760i	860i	e5



Compatible



Adaptable



Incompatible



Telescoping jib boom

The hydraulically telescoping jib boom is a very efficient and versatile tool in all lifting jobs on the work site. The steplessly extending and retracting boom allows lifting to places that would otherwise be very hard to reach. Compact design with telescoping cylinder inside the boom makes work safe and easy.

The jib boom is equipped with a rotating lifting hook and durable wear pads on the outer boom.

- **Excellent outreach, as much as 134" from the front wheels**
- **Max. lift height with 800 series as high as 205"**
- **Versatile lifting attachment for various load handling jobs**



Max. boom length	74.8 in
Min. boom length	51.2 in
Lifting height*	205 in
Max load Avant 800 ser*	1102 lb
Max load Avant 700 ser*	880 lb
Max load Avant 600 ser*	660 lb
Max load Avant 500 ser*	550 lb
Max. outreach*	134 in
Weight	243 lb
Product no	A21342

* Both the telescopic boom of the loader and the jib boom extended to max. outreach.

220	225	423	523	528	530	630	635	640	735	755i	760i	860i	e5



Hydraulic trailer hitch

The hydraulic trailer hitch features hydraulic height adjustment of the ball hitch, which makes it easier to connect trailers in varying heights and ground conditions. The hitch is equipped with both ball and a towing pin. Attention: Requires double acting rear auxiliary hydraulics outlet on the loader.



- Equipped with 2 inch ball hitch/towing pin
- 9.8 in vertical hitch height adjustment
- Hydraulic cylinder equipped with lock valve
- Can be mounted on 400-800 series

Height adjustment	hydraulic, 9.8 in
Weight	66 lb
Product no	A36518

220	225	423	523	528	530	630	635	640	735	755i	760i	860i	e5
Compatible				Adaptable				Incompatible					

Ball hitch on front

An easier way to move trailers, trailer mounted work platforms, boats on trailer etc. on yards. Thanks to the perfect vision to the ball hitch it is very easy to couple a trailer by just driving the ball under the trailer and locking it in the coupling by lifting the boom of the loader. Equipped with a combined 2 inch ball hitch/towing pin.



- Easier way to couple to and move trailers etc. with Avant
- Best possible field of vision to the trailer enables very precise handling in tight situations
- Easy and fast to mount on Avant

Weight	Product no
75 lb	A35592

220	225	423	523	528	530	630	635	640	735	755i	760i	860i	e5
Compatible				Adaptable				Incompatible					

Buckets, material handling



Beehive mover

Avant beehive mover is intended basically for loading and transporting of beehive boxes, but it can handle other objects like cardboard boxes as well. The mover can carry as many as 12 beehives at a time. It consists of a mast, a pallet fork that is mounted on the lower end of the mast, and a hydraulic grapple at the upper end of the mast which presses the boxes against the pallet fork. The grapple is equipped with rubber pads which hold the beehives firmly but gently.

The beehive mover can be mounted on all Avant loaders, and if the beehives need to be transported longer distances by truck it is easy to take the Avant on the truck as well and unload and move the beehives at the destination.

The grapple can be set to five different heights between 16.7 - 53.7 in following the height of the load, and the vertical movement of the grapple is 13.4 in. Distance between the rubber pads can be set manually to four different widths between 11.0 - 28.7 in. Max. load on the beehive mover is 2200 lb and max. pressing force is 4000 lb, which means it can handle other materials that are on pallet as well. Especially lighter boxes and similar objects which don't stay on the pallet without support are easy to handle with the beehive mover.



- Fast and easy way to load and transport beehive boxes
- Can handle also cardboard boxes and similar objects
- Mounts on all Avant loaders
- Also available with 43.3 in A21039 or 47.2 in A36589 pallet forks

Max. load	2200 lb
Max. pressing force	4000 lb
Pallet fork length	33.5 inch
Grabbing width	11.0 - 28.7 inch (four widths can be set manually)
Grapple height	16.7 - 53.7 inch (five heights can be set manually)
Grapple cylinder stroke	13.4 inch
Height	76.8 inch
Width	39.4 inch
Length	37.8 inch
Weight	355 lb
Product number	A36935

220	225	423	523	528	530	630	635	640	735	755i	760i	860i	e5



Compatible



Adaptable



Incompatible



Site toolbox

This robust and versatile toolbox mounts on the attachment coupling plate and can be transported with Avant to the worksite. The flat reinforced cover can be used as a workbench. A screw vice can also be mounted on the box.

The lid is equipped with gas springs and can be locked with a pad lock. Four lifting lugs are mounted with bolts on the sides. They can also be removed if necessary. The box is also equipped with lifting brackets for forklift.

The box holds all or some of the handheld tools inside. It keeps tools in good order and is easy to lift to the back of a van or to a safe place for the night - an can be locked to Avant also.

- **Spacious, lockable box for e.g. handheld tools**
- **Easy to lift and transport with Avant loader**
- **Flat reinforced cover can be used as a workbench**
- **Can be equipped with a screw vice**



Volume	19.4 cu ft
Weight	353 lb
Product no	A21689

220	225	423	523	528	530	630	635	640	735	755i	760i	860i	e5



Compatible



Adaptable



Incompatible



Dozer blade 1400

Equipped with hydraulic blade rotation, Avant dozer is the ideal tool for snow removal, earthmoving and similar jobs where the materials must be dozed away. The blade has a spring release mechanism which protects the blade and operator in the event that it hits an obstacle.

- **Economical dozer blade, well suited for snow removal**
- **Spring release mechanism for improved safety**
- **Two solid skid shoes as standard - reduce blade wear and improve maneuverability**
- **Ice cutting edge and rubber edge available as an option**

Blade width	55 in
Slewing angle	$\pm 30^{\circ}$
Weight	275 lb
Blade height	15 in
Product no	A36649



Options:

Extensions 2 x 7 inches (can be mounted straight or in collecting position) A36651

Ice cutting edge A32315, Ice cutting edge 7 in on extension A413823

Rubber edge 55 in A32383, Rubber edge 7 in on extension A48870

220	225	423	523	528	530	630	635	640	735	755i	760i	860i	e5





Dozer blade 2000/2500

Equipped with hydraulic blade turning, Avant dozer blade is the ideal tool for snow removal, earthmoving and similar jobs where the materials must be dozed away quickly. Dozer blade 2000/2500 features a completely new design. The blade is higher and more curved than earlier and moves material more efficiently to the side. Hydraulic slewing, spring release and skid shoes are standard equipment like before. So are the turnable 2x12.2 in extensions which can be mounted in straight or collecting position. The completely new floating system allows the blade to float vertically, which makes working on uneven surfaces considerably easier and more efficient. The blade can also float sideways $\pm 10^\circ$. The floating system can be adjusted manually in three different positions:

- 1) Free floating – both vertically and sideways
- 2) Sideways floating $\pm 10^\circ$ only, without vertical floating
- 3) Rigid position – both vertical and sideways floating locked with bolts

Options Dozer blade 2000:

A417437 Ice cutting edges, kit, for main blade and extensions

A417441 Rubber edges, kit, for main blade and extensions

A417345 Support wheels, 2 pcs

Options Dozer blade 2500:

A417729 Ice cutting edges, kit, for main blade and extensions

A417672 Rubber edges, kit, for main blade and extensions

A417345 Support wheels, 2 pcs

- Two solid skid shoes which reduce blade wear and improve maneuverability
- Robust construction, with spring release mechanism designed for professional use
- Turnable extensions as standard, can be mounted in collection position or straight
- Support wheels, instead of skid shoes, available as an option - keep working height more constant when working on sensitive surfaces

Model	2000	2500
Blade width	54.7 in main blade + 2x12.2 in bolt-on extensions	72.4 in main blade + 2x12.2 in bolt-on extensions
Slewing angle	$\pm 30^\circ$	$\pm 30^\circ$
Weight	474 lb	511 lb
Blade height	23.2 in	23.2 in
Product no	A36123	A36251

Model	220	225	423	523	528	530	630	635	640	735	755i	760i	860i	e5
2000														
2500														



Very compatible



Compatible



Incompatible



Snow plow

Avant snow plow w is a versatile attachment for snow removal. It consists of two independently hydraulically adjustable blades. Angle of the blades is be adjusted with a switch from the driver's seat. Both blades have a spring release mechanism in the lower part of the blade to prevent any sudden stop should the blade hit an obstacle. The floating mechanism on the mounting bracket guarantees that the blade follows ground as well as possible.

The new V1800 and V2400 snow plows feature:

- New vertical floating system (better than old quadangular floating system)
- Significantly more curved blade – moves snow more efficiently to the side
- Support legs with skid shoes as standard
- Curved flat cutting edge with standard 305 mm hole distance; made of high tensile, abrasion resistant wear steel

Option:

Ice scraper edges, kit, snow plow V1800	A36817
Ice scraper edges, kit, snow plow V2400	A36818
Rubber edges, snow plow V1800	A37173
Rubber edges, snow plow V2400	A37171

- **Versatile snow removal tool for professional use**
- **Two independently controllable blades: can be adjusted in straight, V or Y position**
- **Advanced floating system allows working on uneven surfaces as well**

Model	V1800	V2400
Blade width	59.4-72.4 in	79.5-96.5 in
Total width (with curved end flat edge/ice scraper blade)	61.8-74.8 in	81.9-98.8 in
Blade turning angle	± 35 °	± 35 °
Weight	728 lb	860 lb
Blade height	30.3 in	30.3 in
Product no	A36795	A36796

Requires Opticontrol on the loader

Model	220	225	423	523	528	530	630	635	640	735	755i	760i	860i	e5
1800														
2400														





V-Snow blade

Avant V-Snow Blade is a versatile attachment for snow removal. With hydraulic valve function for independent blade functions, V, Scoop, left, right and straight position.

Angling up to 30° in both directions, reversible cutting edge design with spring loaded Trip mechanism.

Blade Floats 5° and tilts 5° for ground contour.

- **Note: Blade type must be ordered with unit**



Option:

Poly edge for PLV5047 V-Snow blade	PB50
Metal edge for PLV5047 V-Snow blade	MB50
Poly edge for PLV6056 V-Snow blade	PB60
Metal edge for PLV6056 V-Snow blade	MB60

Model	50	60
Height	32.5 in	32.5 in
Width	50 in	60 in
Full V	47 in	56 in
Full Scoop	39.5 in	48.0 in
Cutting Width Max Angle 30 degree	43.5 in	52.0 in
Product no	PLV5047	PLV6056
Poly blade	PB50	PB60
Metal blade	MB50	MB60

220	225	423	523	528	530	630	635	640	735	755i	760i	860i	e5



Compatible



Adaptable



Incompatible



Flipper bucket

Flipper bucket is designed for clearing snow in large areas or in areas where snow must be moved long distances. Thanks to the two hydraulically operated side wings the bucket is extremely versatile in snow clearing and can be operated in smaller areas as well without problems.

With the flipper bucket you can move a very large quantity of snow in one push. Because the wings fold out slightly forward from the sides, you can push 2-3 times the capacity of the bucket between the wings. The two side wings can be turned simultaneously and the right wing independently. This makes the bucket easy to control also in narrow or tight areas.

- **Large volume bucket, 28 cu ft**
- **Equipped with two hydraulically operated side wings**
- **Max. working width over 118"**



Option:
Ice scraper edges, kit A436345
Wear plates, kit A435499

Volume	28 cu ft
Width	70.9 - 118.5 in
Weight	720 lb
Product no	A435885

The optional Opticontrol is recommended on the loader.

220	225	423	523	528	530	630	635	640	735	755i	760i	860i	e5





Zoom snow plow

This new type snow plow is equipped with a straight main blade and two wings which can be extended and retracted steplessly, powered by two hydraulic cylinders. This gives several different working widths and makes the snow plow very versatile. The plow is also equipped with hinged end plates which can be turned down on the ground. This allows fast and efficient snow collecting. When the end plates are turned up over the blade the plow works as conventional dozer blade and moves snow quickly to the side – and is narrower as well. The end plates are spring loaded which means they follow the contours of the ground well. Zoom snow plow requires the optional Opticontrol on the loader. Extension and retraction of the wings and turning of the blade are operated with the switches of the switch pack. The wings can be extended one at a time or both at the same time. Indicator lights on the plow show which function is in use. Working width is steplessly adjustable between 53.2" – 92.5". The telescoping tubes of the side wings are equipped with maintenance free wear pads. There is also a safety bolt for blade release at the top link, however as the blade is vertical it doesn't get stuck easily but rather jumps over obstacles.

The mounting frame of the zoom snow plow is the same as on the 2000 and 2500 dozer blades. It allows a $\pm 10^\circ$ vertical floating which can be locked if necessary. The plow is also equipped with $\pm 30^\circ$ hydraulic blade turning. Ice cutting edge is standard equipment.

Option:

Ice scraper edges, kit A437890

Straight cutting edge A437891

- **Hydraulically extendable dozer blade allows snow removal also in smaller yards, on parking lots etc.**
- **Equipped with two wings which can be extended and retracted independently or both at the same time**
- **Steplessly adjustable working width between 53.2" – 92.5"**
- **Hinged, foldable end plates for efficient snow collecting and moving**
- **Hydraulic blade turning $\pm 30^\circ$ and vertical floating $\pm 10^\circ$**

Working width	53.2 in – 92.5 in
Max width	57.5 in – 96.9 in
Max length	39.1 in
Blade turning angle	$\pm 30^\circ$
Vertical floating angle	$\pm 10^\circ$
Weight	1180 lb
Product no	A425180

The optional Opticontrol is recommended on the loader.

220	225	423	523	528	530	630	635	640	735	755i	760i	860i	e5



Compatible



Adaptable



Incompatible



Ice rink scraper blade

The ice rink scraper blade is destined only for maintenance of ice hockey and skating rinks. Thanks to the large 118 inch working width and hydraulic turning of the blade cleaning of the rink is fast and easy. The sharp and curved blade moves away the ice and snow quickly and efficiently.

- **Fast and easy ice and snow removal on ice hockey and skating rinks**
- **Rubber roller bumper at the right end of the blade protects the blade and the rink when working close to the wall of the ice hockey rink**
- **Large 118 inch working width**
- **Hydraulic blade turning $\pm 30^\circ$**



Width	118 in
Height	28.4 in
Weight	320 lb
Product no	A37346

220	225	423	523	528	530	630	635	640	735	755i	760i	860i	e5





Snow blower

Avant snow blower is an efficient snow removal tool with advanced technology. The frame and discharge chute are designed so that there are as little as possible passive surfaces which would prevent snow movement. This open design means efficient snow blowing – the feeding auger eats the snow quickly and easily and moves it to the impeller which throws the snow out through the discharge chute. Thanks to this design the blower works well both with dry and wet snow and clears compacted snow banks also. The feeding auger is made of wear-resistant Hardox steel.

The blower is equipped with two hydraulic motors: one for the auger and one for the discharge impeller. The new type hydraulic motor on the impeller improves the efficiency of the blower considerably. Snow discharge can be directed accurately: the discharge chute can be rotated 270° electrically, operated from the driver's seat. Throwing height can be adjusted manually, electric throwing height adjustment is available as an option and requires the optional attachment control switch pack on the loader.

Two working widths available: 42.3 in and 59.1 in.

Option:

Electric throwing height adjustment A430172

- Efficient high volume snow blower
- Works well both with dry and wet snow
- Equipped with two hydraulic motors: one for the auger and one for the discharge impeller
- Electric 270° discharge chute rotation as standard
- Exact snow discharge
- Manual throwing height adjustment as standard, electric adjustment available as an option

Working width	42.3 in	59.1 in
Total width	48.4 in	62.2 in
Frame height	26.8 in	26.8 in
Auger diameter	18.1 in	18.1 in
Chute rotation	270 °	270 °
Weight	530 lb	655 lb
Product no	A43473 I	A428062

The optional attachment control switch pack is recommended on the loader. If the snow blower is equipped with the electric throwing height adjustment, the switch pack must be mounted.

Model	220	225	423	523	528	530	630	635	640	735	755i	760i	860i	e5
42.3 in														
59.1 in								*	*					

* With Tier 4 Kubota V1505 engine



Compatible



Adaptable



Incompatible



Rotary Broom

With three working models available, 1100, 1500 and 2000. The 1500 and 2000 brooms are equipped standard with power angling by electric actuator motor. This means angling of the broom is easily and comfortably operated with a switch from the driver's seat.

With a floating mechanism the brush is resting on its bristles and the whole brush axle is floating freely. Support wheels are available as an option, for working on sensitive surfaces. The optional rubber lip is intended for snow removal: it limits and directs the snow spray. The broom is equipped with supports which can be extended when the broom is not in use, so that the broom rests on the supports and the nylon brush doesn't get damaged during storage.



Option:
Electric turning for rotary broom 1100, product no. A36112
Poly replacement brush sections, product no. 64716
Wire replacement brush sections, product no. 65888
A35760 Support wheels for rotary broom
A438900 Rubber lip, rotary broom 1100
A438874 Rubber lip, rotary broom 1500
A438914 Rubber lip, rotary broom 2000

- Professional sweeper with manual or electric turning
- Free floating broom allows big vertical movement and guarantees excellent sweeping result
- Equipped with extendable supports for storage: nylon brush doesn't get damaged during storing

Model	1100	1500	2000
Broom width	43.3 in	59.0 in	79.0 in
Total width	53.9 in	70 in	90 in
Boom diameter	21.7 in	21.7 in	21.7 in
Turning	manual	electric	
Turning angle	+/- 25 °	+/- 25 °	+/- 25 °
Weight	375 lb	440 lb	575 lb
Product no	A36067	A35284	A35583

The optional attachment control switch pack is recommended on the loader.

Model	220	225	423	523	528	530	630	635	640	735	755i	760i	860i	e5
1100														
1500														
2000														





Collecting broom 1100

The collecting broom 1100 is mainly intended for Avant 200, 400 and 500 series. Broom diameter is 19.7 in, it consists of 32 pcs brush segments which can be changed one by one. The broom is equipped with three support wheels and with Optifloat™ quick attach system which allows both vertical and sideways floating of the broom and guarantees efficient sweeping also on uneven surfaces. Two indicator arrows on the Optifloat™ quick attach bracket make adjustment of the floating very easy. Broom height can be adjusted manually, to compensate wear of the nylon bristles.

Collector box with 21 gal volume is mounted in front of the broom. Emptying of the box is hydraulic. Water spraying system for dust binding and one side brush are available as an option.

- Intended mainly for 200, 400 and 500 series
- Equipped with Optifloat™ => works well on uneven surfaces as well
- Broom height can be adjusted manually
- Collector box with hydraulic emptying in front of the broom, box volume 21 gallon

Broom width	43.3 in
Total width	53.1 in
Broom diameter	19.7 in
Collector box volume	21 gal
Water tank volume	15.9 gal
Weight without side brush	695 lb*
Weight with 1 side brush	750 in*

* without water spraying system

Product no	Side brush	water spraying system
A36883	no	no
A426229	1 brush	no
A426231	1 brush	yes



Options:

Water spraying system, with 15.9 gal water tank A37431

Side brush A35698

(Water spraying system and side brush not available for 200 series)

220	225	423	523	528	530	630	635	640	735	755i	760i	860i	e5



Compatible



Adaptable



Incompatible



Collecting broom 1500

The collecting broom 1500 is mainly intended for professional property maintenance companies, cities and municipalities. The broom has a heavy duty construction, floating brush axle, automatic brush wear compensation and a specially designed water spraying system for dust binding.

The broom is also well enclosed all around the main brush. This gives a better collection result, especially when turning with the machine. Another benefit from the enclosed construction is less dust formation.

The broom is equipped with three support wheels and with Optifloat™ quick attach system which allows both vertical and sideways floating of the broom and guarantees efficient sweeping also on uneven surfaces. Two indicator arrows on the Optifloat™ quick attach bracket make adjustment of the floating very easy.



Option:
Side brush A35698
Water spraying system A35642

Model	1500
Broom width	59.0 in
Total width	70.0 in
Boom diameter	21.7 in
Box emptying	Hydraulic (with two cylinders)
Box volume	7.1 cu ft
Water tank volume	32 gal
Weight without side brush	935 lb (without water spraying system)
Weight with 1 side brush	990 lb
Weight with 2 side brush	1050 lb

Product no	Side brush	water spraying system
A35602	no	no
A35918	1 brush	no
A35919	1 brush	yes

The optional attachment control switch pack is recommended on the loader.

220	225	423	523	528	530	630	635	640	735	755i	760i	860i	e5



Compatible



Adaptable



Incompatible



Bucket broom

Bucket broom which collects waste in a large bucket shaped box. The broom gives best sweeping result when reversing, but it also works when driving forward. Forward sweeping is especially recommended when the waste is larger in dimensions, for instance construction waste, beverage cups, tree leaves, etc. The bucket broom is equipped with a floating mechanism which allows the bucket lip to rest against ground freely. To Empty the collector, first lift the broom up hydraulically, after that the collector box can be emptied by tilting it down like a normal bucket. Brush axle is equipped with a simple quick locking system for adjusting the sweeping height. Water spraying system for dust binding is also available.



Option:
 A35956 Water spraying system for Bucket broom 1100
 A35807 Water spraying system for Bucket broom 1500
 A436108 Rubber blade brush for Bucket broom 1100
 A433868 Rubber blade brush for Bucket broom 1500



- **Excellent sweeping result when driving backwards**
- **Suitable for collecting larger waste as well**
- **Large bucket shaped collector box**
- **Quick, hydraulic emptying**

Model	1100	1500
Broom width	43.3 in	59.1 in
Total width	53.4 in	69.4 in
Box volume	13.1 cu ft	17.7 cu ft
Boom diameter	19.7 in	19.7 in
Water tank volume	31.7 gal	31.7 gal
Product no	A35945	A35689
Product no. with water spraying system	A36023	A36024

Model	220	225	423	523	528	530	630	635	640	735	755i	760i	860i	e5
1100														
1500														



Compatible



Adaptable



Incompatible



High pressure washer

The washers combine low water consumption and high water flow and pressure. High pressure water washes dust, sand and debris out of asphalt, concrete and similar surfaces and doesn't emit dust after drying. Low water consumption makes it possible to clean larger areas with a single pass.

The washer series features three models with different water tank volumes: 73 gal on model S, 147 gal on model M and 221 gal on model L. All washers are equipped with both a angling nozzle bar for street cleaning and a handheld wand with 65 foot retractable hose reel.

Max. water flow and pressure on models S and M are as high as 7 gal/min and 2900 PSI, and on the largest model L the 13 gal/min max. water flow and 3190 PSI pressure make it a very efficient cleaning machine.

Nozzle bar angling is hydraulic on models M & L, operated from the driver's seat. Model S is equipped with manual angling.



- Efficient high pressure washers, equipped with both a nozzle bar for street cleaning and with a handheld wand
- Three models: S, M and L with water tank volumes of 73 gal, 147 gal and 221 gal respectively
- Models M & L equipped with hydraulic nozzle bar angling for professional street cleaning

Model	S	M	L
Max. water flow	7 gal/min	7 gal/min	13 gal/min
Max. water pressure	2900 PSI	2900 PSI	3190 PSI
Water tank volume	73 gal	147 gal	221 gal
Working width	59 in	71 in	79 in
Nozzles	8 pcs	9 pcs	9 pcs
Weight	210 lb	503 lb	610 lb
Product no	A37012	A37013	A37014

The optional attachment switch pack is recommended for washers M & L, for operating the hydraulic nozzle bar angling.

Model	220	225	423	523	528	530	630	635	640	735	755i	760i	860i	e5
S														
M														
L														





Artificial turf attachment ATA1200

The artificial turf attachment ATA1200 is made for professionals. It cleans, filters & returns the infill in a single pass. The fully hydraulic system powered with Avant performs the cleaning tasks efficiently, economically and with very low impact footprint in all artificial surfaces.

The regular cleaning and maintaining of the artificial surfaces reduces compaction and sustains the optimum surface conditions and playing dynamics year-around. Well maintained sport surfaces also reduce the risk of acute and chronic injuries.



Option:

Rear brush at the back of the unit to level the infill and finish the cleaning, A37035

Front rake for deep cleaning of the field, A37061

Sand sieve, A421389

Deep cleaning sieve, A421391

Tilt adapter 90 degrees, to be able to access through smaller gates and corridors (requires optional second auxiliary hydraulics outlet in the front) A36505, ATA Speed Valve: Reduces machines speed while allowing full engine RPM.

- Rotating main brush
- Turbine powered dust and fine particle extraction system including 2 collection hoppers
- Adjustable and interchangeable sieving chamber with 2 large rear hoppers to collect larger debris
- Rubber/cork infill sieve as standard, other sieves available as an option
- Refill unit operating at 1.5x the ground speed to put back the cleaned rubber and soil
- Foldable following brush at the back of the unit to level the infill and finish the cleaning

Working width	47.2 in
Weight	794 lb
Product no, without rear brush	A36494
Product no, with rear brush	A37230

includes rubber/cork infill sieve, without front rake

220	225	423	523	528	530	630	635	640	735	755i	760i	860i	e5



Compatible



Adaptable



Incompatible



Artificial turf maintenance brush

The brush is intended for the daily and weekly maintenance of artificial turf fields. It does not limit or prevent the use of the artificial turf attachment ATA1200, because ATA1200 is intended for monthly maintenance of the field.

The main function of the maintenance brush is to brush up the compacted field's fibers in order to make the field softer again. It also distributes the infill (rubber, cork or sand) evenly so that the field stays softer longer time as well. It is equipped with a floating attachment bracket which makes sweeping easier and boom floating on the loader is not necessary.

- **Efficient and economical daily and weekly maintenance with a 3 m wide brush**
- **Three-phase brushing with three brushes: straight-angle-straight**
- **Floating quick attach bracket**
- **Not intended for deep cleaning of artificial turf fields**



Working width	2925 mm
Total width	3032 mm
Length	1300 mm
Weight	135 kg
Product no	A37058

220	225	423	523	528	530	630	635	640	735	755i	760i	860i	e5





Sand/salt spreader

The new sand/salt spreaders are equipped with a new type spreading system: a hydraulically operated pendulum spreading plate which moves horizontally and spreads the material. Spreading plate height can be adjusted following the material type, which allows spreading of gravel as well as finer sand and salt. A blocking plate kit, available as an option, is necessary when spreading salt and fine sand (prevents the material from falling out by itself). The unit spreads about 8" - 12" wider than the spreader's own width, and thanks to smooth movement of the spreading plate there is no risk of causing damage to the objects around (parked cars, buildings etc.). Spreading speed can be adjusted steplessly with a flow divider valve.

The mixing shaft which prevents clogging is mounted on the spreading plate. Mixing shaft doesn't rotate, which means that a protective mesh is not needed at the discharge gap. The spreader is front mounted as standard and can be tilted down so that it can be loaded like a normal bucket. For Avant 200 series a mounting plate which increases tilting angle by 30° is necessary for tilting the spreader to horizontal position. Rear mounting is also possible: on 528/530 and 600 series on a designated rear mounting plate (requires also rear auxiliary hydraulics outlet on the loader); on Avant 700 and 800 series either on the rear mounting plate A441613/A441666 (see page 32), or on the optional hydraulic rear lift A427547/A438490 (page 32). Rear mounting requires the optional rear auxiliary hydraulics outlet on the loader, and with the hydraulic rear lift also the attachment control switch pack for rear mounted attachments. Rear lights are also available as an option.

Options:

- A429245 Blocking plate kit for sand & salt spreading, spreader 900
- A429247 Blocking plate kit for sand & salt spreading, spreader 1200
- A429959 Rear lights
- A37315 Mounting plate for 200 series, increases tilting angle by 30°
- A433267 Rear mounting plate 528/530/600 series

- Pendulum type sand/salt spreader, spreads 8" - 12" wider than the spreader's own width
- Two models
- Adjustable spreading amount and speed
- Can spread gravel, sand and salt
- Front mounted as standard – rear mounting possible on Avant 528/530 & 600, 700 and 800 series

Model	900	1200
Spreading width	39" - 43"	55" - 59"
Volume	57 gal	114 gal
Total width	37.0 in	52.0 in
Length	44.9 in	44.9 in
Height	21.7 in	21.7 in
Weight	270 lb	430 lb
Product no	A427150	A424325

- A441613 Rear mounting plate 700 series
- A441666 Rear mounting plate 800 series
- A427547 Hydraulic rear lift 700 series
- A438490 Hydraulic rear lift 800 series

Model	220	225	423	523	528	530	630	635	640	735	755i	760i	860i	e5
900														
1200														



Compatible



Adaptable



Incompatible



Centrifugal sand / salt spreader

Centrifugal sand or salt spreader is the right choice for winter maintenance of large areas. Both the spreading area (6 to 20 feet) and the spreading amount can be adjusted either manually (standard) from the side of the spreader - or electrically from the driver's seat (option). This guarantees fast and efficient spreading.

- **Fast spreading on large areas**
- **Spreading width and amount adjustable: manual adjustment as standard, electric adjustment available as an option**
- **Rear mounting also possible, on 700 and 800 series**



Option:

Electric spreading amount and width adjustment A37301

* The loader must be equipped with attachment control switch pack (option)

Hook agitator (for fine sand and salt) 6585

Chain vibrator/agitator (for gravel and gravel/salt mix) 66378

Spreading width	31-240 in
Volume	8.8 cu ft
Max. load	1100 lb
Weight	287 lb
Product no., front mount	A21183

Rear mounting is also possible on 700 and 800 series, on the optional attachment mounting plate A441613/A441666 (see page 32). It requires the optional auxiliary hydraulics outlet in the rear. If electric spreading amount and width adjustment is fitted, also the optional attachment control switch pack for rear mounted attachments must be installed.

220	225	423	523	528	530	630	635	640	735	755i	760i	860i	e5





Towable sand / salt spreader

The towable sand / salt spreader is a very handy and economical attachment for winter maintenance of yards and walkways. Power to the spreader shaft is taken mechanically from the wheels. Wheels are equipped with a clutch which allows transporting without sand spreading. Equipped with a 2 inch trailer coupling.

Attention: The loader must be equipped with the 2 inch ball hitch A417337.

- **Economical spreader, quick to attach on the trailer coupling**
- **Mechanical power take off from the wheels – no need for rear auxiliary hydraulics**
- **Includes a durable rain cover to protect from moisture and spillage**



Spreading width	39.4 in
Width	59.1 in
Volume	8.1 cu ft
Weight	121 lb
Operation	Mechanical
Product no	A415430

220	225	423	523	528	530	630	635	640	735	755i	760i	860i	e5



Compatible



Adaptable



Incompatible



Vacuum brush

The vacuum brush is intended mainly for collecting of tree leaves in parks, lawns, yards etc. The powerful vacuum unit sucks the waste first into the vacuum on the bottom of the collector box and then into the box, compacting everything into a tight package. The mouthpiece on the vacuum is equipped with a 51.2 in wide rotary brush which loosens also more compacted and wet leaves and waste. Brush rotation speed can be adjusted steplessly.

The collector box (same box as on A37411 Collecting lawn mower 1500) is mounted on top of the vacuum unit. It is equipped with large transparent plastic windows so that you can easily monitor how the box is filling up. The box is emptied by opening the lid (powered by a hydraulic cylinder) from Avant's driver seat and by lifting the boom the collected waste can be tipped into a container, skip etc.

- **Efficient leaf collector**
- **Large volume collector box allows fast collecting**
- **Equipped with Optifloat™-system, works well on uneven surfaces also**
- **Fast and easy floating adjustment with indicator arrows on the Optifloat™**
- **Easy emptying thanks to hydraulic lid opening from Avant's driver seat**



Option:
Handheld vacuuming tube A431787

Working width	51.2 in
Total width	62.6 in
Collector box volume	28.0 cu ft
Length	60.6 in
Height	46.9 in
Weight	960 lb
Product no	A428800

220	225	423	523	528	530	630	635	640	735	755i	760i	860i	e5





Leguan 50 access platform

Avant and its daughter company Leguan Lifts have joined their forces and created an access platform which is mounted directly into Avant loaders quick attach plate. The result is an inexpensive, handy and easy to use access platform. With the help of this lift Avant's versatility is further increased on the job sites.

The Leguan 50 is mounted directly on to loader's quick attach plate quick attach plate like any other Avant attachment. This makes it fast and easy to mount it on and take it off.

The lift is designed according to all access platform directives and it is CE-certified. The safe working load for the lift is 440 lb which means it is allowed for operation with two men or one man with plenty of tools.

- An inexpensive access platform with 197" working height
- Safe and legal way to do building repairs, painting, light bulb changes etc.
- The maximum allowed load on the basket is 440 lb and you are able to use the lift alone
- Leguan 50 is attached to Avant which makes it easy to set it up in virtually all kinds of terrains
- The Leguan 50 access platform gives even further possibilities to use your Avant on work sites



Max. allowed load	440 lb
Max. working height	197 in
Height (with lowered platform)	74.8 in
Width	51.2 in
Weight	893 lb
Product no	A34812

220	225	423	523	528	530	630	635	640	735	755i	760i	860i	e5



Compatible



Adaptable



Incompatible



Tipping trailer

Avant tipping trailer is available in two models: with carrying capacity of 1200 kg or 1800 kg. Both are equipped with hydraulic tipping. All sides can be removed if necessary. Extra side set is available as an option for the smaller model, on the bigger model it is standard.

Attention: The loader must be equipped with the double acting rear auxiliary hydraulics outlet and the 2 inch ball hitch.

- **Robust and versatile tipping trailers, well suited both for earthmoving and for lighter jobs**
- **All sides can be removed if necessary – giving a completely flat and even bed**
- **Hydraulic tipping on both models**



Model	1200	1800
Max. Load	2650 lb	4000 lb
Width	44.3 in	53.1 in
Length	67.3 in	88.2 in
Tire size	23 x 8.5 - 12	26 x 12 - 12
Side height	11.0 in	22.0 in
Product no	A2949	A21200

Option: Extra side set (A45193) for 1200 model

Model	220	225	423	523	528	530	630	635	640	735	755i	760i	860i	e5
1100														
1800														



Compatible



Adaptable



Incompatible



Lawn mower I200

The lawn mower I200 is a robust and efficient mower deck. It is equipped with the Optifloat™ floating system, developed by Avant, which guarantees optimal touch with the ground also on uneven lawns. Two indicator arrows on the quick attach plate make adjustment of the floating very easy: when the mower is on level surface and the arrows meet, Optifloat™ is adjusted correctly. The mower is also equipped with a safety valve which stops the blades when the mower is lifted off the ground. The deck is made of stamped steel. This makes mowing more efficient and the grass clippings don't get stuck on the deck so easily. The mower is mulching type as standard. Side discharge kit is available as an option.

- **Optifloat™ floating system guarantees easy operation and good mowing result also on uneven lawns**
- **Safety valve stops the blades when the mower is lifted off the ground**
- **Thanks to stamped steel deck mowing is more efficient and the deck stays cleaner**
- **Option: Side discharge kit A36013**



Option: Side discharge kit A36013

Cutting width	47.2 in
Blades	2 pcs
Cutting height	1.0 - 4.0 in
Weight	375 lb
Product no	A35965

220	225	423	523	528	530	630	635	640	735	755i	760i	860i	e5



Compatible



Adaptable



Incompatible

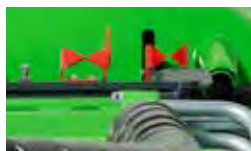


Lawn mower 1500

Avant's biggest lawn mower is intended for professional lawn mowing also on larger areas. The mower can be modified to right type of mowing for different circumstances.

Powerful mower allows a higher drive speed and perfect cut also on challenging conditions.

Optifloat™-system allows large vertical movement of the cutting deck which guarantees efficient cutting as the deck follows the ground contours also on uneven terrains. Two indicator arrows on the quick attach plate make adjustment of the floating very easy: when the mower is on level surface and the arrows meet, Optifloat™ is adjusted correctly. The floating system is also equipped with a safety valve, which stops the blades when the mower is lifted off the ground.



- **Optifloat™ floating system provides easy operation and good mowing result on uneven lawns**
- **More cutting power for challenging mowing conditions**
- **Side discharge as standard, mulching kit available as an option**
- **Rounded edge design reduces damage to trees, buildings, etc. in case of contact**
- **Puncture free, foam filled tires**
- **Option: Mulching kit A34530**



Optional extras: Mulching kit A34530

Cutting width	59.0 in
Blades	3 pcs
Cutting height	1.0 - 4.0 in
Height	17.7 in
Weight	630 lb
Product no	A37548

220	225	423	523	528	530	630	635	640	735	755i	760i	860i	e5





Collecting lawn mower 1200

With the Avant collecting mower 1200 you can easily mow and collect the clippings. Thanks to its excellent suction power collecting leaves from the lawns is also possible.

The mulching blades of the mower crush the grass clippings, leaves etc. into a very fine material which then moves to the collector and forms a tight and compact package. The cutting waste is ideal material for composting. Collector capacity is as big as 55.5 gal, which enables cutting of small to medium sized areas. Emptying of the collector is very easy: lift the mower up from the ground with Avant's boom and then tilt the mower downward so much that the grass waste pushes the lid open and the waste comes out. The Optifloat™ floating system, developed by Avant, guarantees optimal touch with the ground also on uneven lawns. Two indicator arrows on the quick attach plate make adjustment of the floating very easy: when the mower is on level surface and the arrows meet, Optifloat™ is adjusted correctly.

- **Powerful mower with a collector unit**
- **Can also be used for collecting tree leaves on lawns**
- **Vacuum fan can be turned off and the unit can be used as a mulching mower only**
- **Optifloat™ floating system provides easy operation and good mowing result on uneven lawns**

Cutting width	47.2 in
Blades	2 pcs
Cutting height	1.0 - 4.0 in
Collector box volume	7.4 cu ft
Product no	A35973



Option: Mounting plate for 200 series, increases tipping angle by 30° A37315

220	225	423	523	528	530	630	635	640	735	755i	760i	860i	e5



Compatible



Adaptable



Incompatible



Collecting lawn mower I 500

Collecting mower designed for professional use with 59" cutting width and 28 cu ft collector box. The high suction power makes it also possible to collect tree leaves on lawns. The blades cut the grass, tree leaves etc. to a fine mulch which packs tightly into the collector box.

Collector box volume is designed to be large enough for professional use in larger areas. Lid opening is hydraulic and operated from Avant's driver seat. By lifting the loader boom and tilting the mower forward the collector box can be emptied into a container, skip etc. Collector box is pivoted in the front and can be tilted forward for easier maintenance. Two indicator arrows on the Optifloat™ quick attach plate make adjustment of the floating very easy.

- **Equipped with Optifloat™ system**
- **More cutting power for challenging mowing conditions**
- **Vacuum fan can be turned off and the unit can be used as a mulching mower only**
- **Rounded edge design reduces damage to trees, buildings, etc. in case of contact**
- **Puncture free, foam filled tires**



Optional extras: Mulching kit A34530

Cutting width	59.0 in
Height	43.3 in
Blades	3 pcs
Cutting height	1.0 - 4.0 in
Collector box volume	28.0 cu ft
Product no	A3741 I

220	225	423	523	528	530	630	635	640	735	755i	760i	860i	e5





Cutting bar

An uncomplicated cutting bar for mowing of hay, grass and trimming of bushes and hedges. Thanks to the side mounting and angle adjustment below ground level mowing of slopes is also possible. Guide plates under the bar support the cutting blades when mowing.

Spring loaded release mechanism allows the bar to move backwards if it hits an obstacle. Cutting angle can be adjusted manually with the hand winch. Electric cutting angle adjustment is available as an option.



- **Robust and economical long hay cutter and hedge trimmer**
- **Cutting angle adjustment below ground level - mowing of slopes also possible**
- **Spring loaded release mechanism for increased safety - cutting bar gives in when hitting an obstacle**
- **Electric cutting angle adjustment available as an option**

Cutting width	57.1 in
Transport width	100 in
Transport height	70.0 in
Weight	220 lb
Product no	A35676

Optional extras: Electric cutting angle adjustment A35975

220	225	423	523	528	530	630	635	640	735	755i	760i	860i	e5



Compatible



Adaptable



Incompatible



Flail mower

Flail mower is a drum-type cutter, intended for cutting of long grass, scrub, bush and similar vegetation. It will cut up to 0.8" thick tree branches with ease.

Flail mower is the optimal cutting device for places where you need a lot of cutting power and a rougher cut will do. The most common applications for flail mower are places with taller vegetation like meadows, road sides, fields etc.

- **Unique cutting deck design** - improves cutting result, requiring less power from the engine and hydraulics
- **Flails are mounted in spiral configuration on the shaft** which makes cutting more efficient
- **Direct drive: hydraulic motor mounted directly on the shaft**
- **Floating system allows free vertical movement, and the floating can be set so that the mower can tilt forward and backward**
- **Bigger roller in the rear** – better stability and less resistance when mowing
- **Both models equipped as standard with hammer type flails – Y and L type flails are available as an option**



Optional flail types:

A419931 Y-flails, pair, 16 Pcs/47.2 in mower, 18 Pcs/53.1 in mower, 20 Pcs/59 in mower

A420305 L-flails, pair, 16 Pcs/47.2 in mower, 18 Pcs/53.1 in mower, 20 Pcs/59 in mower

Cutting width	47.2 in	53.1 in	59 in
Total width	62.2 in	68.1 in	74 in
Cutting height	1 - 4 in		
Standard flails type/pcs	hammer 16 pcs	hammer 18 pcs	hammer 20 pcs
Weight	530 lb	575 lb	595 lb
Product no	A36730	A441550	A36015

Model	220	225	423	523	528	530	630	635	640	735	755i	760i	860i	e5
1200														
1500								*	*					

90



Compatible



Adaptable



Incompatible

* With Tier 4 Kubota V1505 engine



Flail mower with hydraulic side arm

Avant flail mower with a hydraulic side arm allows mowing on the right side of the loader. The side arm is equipped with a straight telescopic arm and a tilting jib arm, which allows easy mowing of road banks and gradients as well.

Without telescoping the side arm the inner edge of the flail mower is approximately level with the right wheel of the loader, depending somewhat on the wheel size. The telescopic arm extends max. 39 in hydraulically to the side, which means that the outreach of the 47 in flail mower is max. 116 in from the center of the loader. The jib arm movement is max. 45° down and 90° up from horizontal position.

The unit consists of:

- Flail mower 47.2 inch A37505
- Hydraulic side arm A424552
- Rear side weights 400 lb A49063

- Side arm consists of straight telescopic arm and jib arm
- Telescoping max. 39 in
- Jib arm movement max. 45° down and 90° up from horizontal position
- Outreach to the side max. 116 in
- Equipped with high flow hydraulic motor

Outreach	116 in
Cutting width	47.2 in
Weight	1500 lb (incl. 400 lb weight kit A49063)
Product no	A37213

The optional Opticontrol is required on the loader. The 400 lb rear side weights A49063 are also recommended on the loader, especially with 600 series.



220	225	423	523	528	530	630	635	640	735	755i	760i	860i	e5
							*	*					

* With Tier 4 Kubota V1505 engine

Compatible

Adaptable

Incompatible

Hydraulic side arm S30

The hydraulic side arm with S30 quick attach system can be equipped with attachments with the corresponding S30 quick attach bracket. The side arm is equipped with a straight telescopic arm and a tilting jib arm. The telescopic arm extends max. 39.4" hydraulically to the side, and the jib arm movement is max. 45° down and 90° up from horizontal position.

The side arm is equipped with a hydraulic release mechanism, and the hydraulic release pressure can be adjusted and measured. The attachment which is mounted on the side arm will give in backwards when it hits an obstacle. The side arm will come back to normal position as soon as the attachment is tilted downwards.

Avant 400 lb side weight kit A49063 is available as an option. It is necessary with heavier attachments like the A37505 S30 flail mower 47.2".

- Hydraulic hoses of the attachment are connected to the side arm with flat face quick couplers
- Telescope and jib arm movement speeds are adjustable
- The jib arm floats hydraulically upwards, but not downwards. When working, the attachment which is mounted on the arm (flail mower for example) remains in the position where it raised by an obstacle

Max attachment weight	1100 lb
Telescoping to the side	max. 39.4 in
Max width	73.6-101.6 in
Jib arm movement	135°
Weight	550 lb
Product no	A424552

The optional Opticontrol is required on the loader.

220	225	423	523	528	530	630	635	640	755i	760i	860i

Compatible Adaptable Incompatible

Mechanical side arm S30

The mechanical side arm with the S30 quick attach system can be fitted with lighter (max. 440 lb) attachments like the A430938 S30 cutting bar and the A429926 S30 multi function drive unit with HD brushes. It is equipped with a mechanical, manually extendable straight telescopic arm and a hydraulic jib arm which tilts the attachment up and down. Telescoping to the side is max. 39.4" and jib arm movement is max 45° down and 90° up from horizontal position.

The side arm is pivoted in the middle, locked with a pin, and can be turned manually up and down with 45° steps – and even 180° to the other side, which makes it possible to work either on the right or on the left side of the loader. The arm is rigid to all directions, there is no release mechanism in case it hits an obstacle.

- Versatile side arm, can be fitted with hedge cutter bar, weed brushes etc.
- Equipped with a mechanical, manually extendable straight telescopic arm and a hydraulic jib arm
- Telescoping to the side max. 39.4", jib boom movement max 45° down and 90° up from horizontal position

Max attachment weight	440 lb
Telescoping to the side	max. 39.4 in
Max width	64.8 in
Jib arm movement	135°
Weight	285 lb
Product no	A431070

The optional Opticontrol is required on the loader.

220	225	423	523	528	530	630	635	640	735	755i	760i	860i	e5

Compatible Adaptable Incompatible

Attachments for S30 side arms

Flail mower S30

The 47.2" flail mower with S30 quick attach bracket mounts only on the hydraulic side arm A424552. It cannot be mounted on the attachment coupling plate of the loader or on the A431070 S30 mechanical side arm - and on the other hand the normal flail mowers A36730 and A36015 cannot be mounted on the hydraulic side arm. The S30 mower has otherwise the same 47.2" mower deck with hammer flails as the A36730 flail mower, but it is equipped with the high flow hydraulic motor of the 59" flail mower. This gives 25 % higher efficiency/working width ratio than on the 59" flail mower, and 100 % higher than on the standard A36730 47.2" flail mower.

Working width	47.2 in
Max. width	62.2 in
Weight	550 lb
Product no	A37505



Cutting bar S30

There are two models of cutting bars which mount on the side arms with S30 quick attach system (both on the mechanical & hydraulic side arm). They cannot be mounted on the attachment coupling plate of the loader. The A430938 cutting bar is equipped with the same cutting blades and blade guides as the A35676 cutting bar. The frame and actuator mechanism are however stronger, which means the A430938 bar is optimized for hedge cutting and doesn't work too well with hay because of the higher frame. There are wear plates at each end of the cutting bar, useful when working on paved and asphalt surfaces for instance. The A434613 cutting bar with double knives is a more precise hedge cutter and makes a cleaner cut thanks to the double knife design which cuts the branches by sawing them. The mounting bracket of the cutting bars is pivoted and locked with a bolt, and can be turned manually in different positions. This gives the possibility to for instance cut the hedge horizontally, vertically and in different angles. The cutting bars are also equipped with a pressure relief valve which protects the unit if it hits an obstacle.

Working width	59 in	59 in
Total width	63 in	70 in
Weight	200 lb	128 lb
Product no	A430938	A434613



A430938

A434613

New



Rotary hedge cutter S30

Rotary hedge cutter S30 is an efficient attachment for cutting of shrub, bush, hedge and similar vegetation. It is equipped with three rotors with 4 cutting blades on each rotor. The blades are mounted in two different heights 2+2 on the rotor which – together with the outside rotors rotating inwards - means that they mulch the material into small bits which don't need to be collected after cutting. The rotary hedge cutter can be mounted both on the A431070 mechanical side arm and on the A424552 hydraulic side arm. With Avant 600 series the optional 400 lb rear side weights A49063 are recommended on the loader for better stability.

- **Efficient hedge cutter on S30 side arms, works both in horizontal and vertical position**
- **Equipped with three rotors with 4 cutting blades each**
- **Mulches the material into small bits – cutting waste doesn't need to be collected**



Working width	51.2 in
Total width	57.9 in
Cutting height	1.0 – 4.0 in
Blades	12 pcs (4 pcs/rotor)
Length	40.4 in
Height	15.2 in
Weight	441 lb
Product no.	A435550

220	225	423	523	528	530	630	635	640	735	755i	760i	860i	e5



Attachments for S30 side arms

Multi function drive unit S30

The multi function drive unit equipped with the S30 quick attach bracket is intended mainly for rotating different types of brushes – XL weed brush, XL wire rope brush and carousel broom. It can be mounted in horizontal or vertical position on the side arms with S30 quick attach system (both mechanical and hydraulic arm), but not on the attachment coupling plate of the loader. The S30 drive unit has the same 2 1/4 in square shaft for attachments as the A37190 Multi function drive unit, but is equipped with a lower torque and higher speed hydraulic motor and works therefore better with brushes. On the other hand it doesn't have enough power to rotate auger drills or screw cone log splitter.

- Drive unit which mounts on S30 side arms
- Possible to mount in horizontal or vertical position
- Equipped with high speed hydraulic motor, intended for rotating different types of brushes
- Same 2 1/4 in square shaft for attachments as on the A37190 Multi function drive unit

Groundcare



Torque	950 Nm @ 200 bar
Rotation speed	95 rpm @ 7.9 gal/min
Weight	30 kg
Product no	A429926



- A37317 Carousel broom
- Same Ø 39.4 in replaceable brush as on A2971 Carousel broom, part no. A32698
 - Weight 150 lb



- A433646 Carousel broom, steel
- Ø 39.4" brush with steel bristles
 - Weight 150 lb



- A429932 XL weed brush
- Consists of 3 pcs Ø 23.6" steel brushes mounted together
 - Max. diameter 48.4"
 - Height 14.8"
 - Weight 140 lb



- A431157 XL wire rope brush
- Brush with 32 pcs heavy duty wire rope bundles
 - Max. diameter 40"
 - Height 14.6"
 - Weight 80 lb

220	225	423	523	528	530	630	635	640	735	755i	760i	860i	e5



Compatible



Adaptable



Incompatible



Edge trimmer

Avant edge trimmer is the perfect attachment for trimming the edges of lawns, hedges, flower beds etc. It consists of a hydraulically operated trimmer mounted next to a cutting disc.

Cutting disc cuts lawn precisely where you want and hydraulic trimmer breaks up any soil or lawn that is left to the side of the cutting disc. Edge trimmer leaves a good looking finish to any garden thanks to its adjustable cutting depth and precise control.

The renewed edge trimmer is equipped with manually extendable arm and can be turned in three different positions: to the right side or to the left side, or to the front = transport position. Support wheel is available as an option.

- Cuts the lawn edge accurately, leaving a finished look on lawns, flower beds, driveways, walkways etc.
- Hydraulic trimmer mills the soil efficiently
- Equipped with manually extendable arm
- Can be turned manually in three positions: to the left or to the right side, and to center transport position
- Support wheel available as an option



Option: Support wheel A36699

Cutting depth	max. 6 in
Cutting disc diameter	18.1 in
Cultivating width	6.1 in
Height	22.8 in
Weight	176 lb
Min. width in working position	42.5 in
Product no	A36621

220	225	423	523	528	530	630	635	640	735	755i	760i	860i	e5





Lawn aerator

Lawn aerator is designed to create holes in the lawn surface which encourages free movement of soil. This helps to improve the circulation of air in the soil which is vital for a healthy lawn. Avant aerator is completely mechanical – when driving forward with the loader the knife type blades on the aerator shaft turn and make holes in the lawn.

The aerator is equipped with 12 rows of blades with 10 blades each, altogether 120 pcs. Working width is 59.1 inches; working height can be adjusted with the nylon spacers on the four support wheels. The aerator is also equipped with mechanical support legs which lift the deck and blades off the ground for storage.

- **Easy and efficient lawn aerating by driving forward with Avant**
- **Equipped with knife type blades**
- **Two Avant 64 lb back weights can be mounted on the sides to add weight**



Working width	59.1 in
Total width	73.2 in
Length	66.9 in
Height	31.7 in
Number of blades	120 pcs
Weight	1260 lb
Product no.	A424201

220	225	423	523	528	530	630	635	640	735	755i	760i	860i	e5



Compatible



Adaptable



Incompatible



Weed brush

Weed brush is an efficient tool for removal of weeds on all kinds of paved areas etc. It is equipped with a steel brush which can be extended manually and turned in three different positions: to the front, to the right side or to the left side. The weed brush is equipped with a support wheel as standard. It can be lifted and locked up to transport position if needed.

- **Efficient weed removal with rotating steel brush**
- **Equipped with manually extendable arm**
- **Can be turned manually in three positions: to the left or to the right side, and to center transport position**
- **Support wheel as standard**

Brush diameter	23.6 in
Bristle material	steel
Height	20.9 in
Length/Width (retracted)	43.3 in
Weight	187 lb
Product no	A36594



Option:
Heavy duty wire rope brush A422665

220	225	423	523	528	530	630	635	640	735	755i	760i	860i	e5





Rotary hoe

Avant rotary hoe is the basic attachment for soil cultivating, seed bed finishing and rotovating. Adjustable cultivating depth up to 6". Avant rotary hoe is equipped with a field roller which compacts the ground after cultivating.

- Direct drive with hydraulic motor mounted directly on the milling shaft
- Blades for efficient milling of the soil
- Vertical grading rake with strong tines in front of the blades which traps stones and debris, effectively allowing soil to bury them
- Working depth steplessly adjustable with the rear field roller
- Adjustable soil scraper blade between the milling shaft and the field roller



Model	I 200	I 500
Working width	47.2 in	59.1 in
Roller width	55.1 in	66.9 in
Total width	60.2 in	72.0 in
Working depth	2.0 - 6.0 in	
Weight	550 lb	650 lb
Product no	A425119	A37430

Model	220	225	423	523	528	530	630	635	640	735	755i	760i	860i	e5
I 200														
I 500														



Compatible



Adaptable



Incompatible

New



Power rake

Power rake is a versatile attachment for soil grading, levelling, raking, and removing of debris. It can be used, for instance, for preparing seedbeds, cutting grades, grading dirt and gravel roads, and cleaning up and grading different types of sites.

Power rake mills the soil to max. 2.6 in depth. The shaft is equipped with steel teeth. Driving direction is forwards and the shaft rotates against the driving direction. The removable side plates make soil moving and directioning even more efficient. The rake is equipped with two adjustable support wheels and it can be turned to max. +/- 30 degrees angle.

Two models available: with manual or hydraulic turning.

- **Versatile attachment for preparing seedbeds, grading dirt and gravel roads, cleaning up building lots and sites etc.**
- **Easy removal and piling up of rocks and other debris by driving forward**
- **Available with manual or hydraulic turning, +/- 30 degrees**



Working width	58.3 in
Total width	69.8 in
Working depth	max. 2.6 in
Turning angle	+/- 30°
Length	47.6 in
Height	26.4 in
Weight	695 lb
Product no., manual turning	A434016
Product no., hydraulic turning	A439234

220	225	423	523	528	530	630	635	640	735	755i	760i	860i	e5





Rotary harrow

Avant rotary harrow is an excellent leveler for lawn beds, yards, gardens etc. – for places where the ground needs to be perfectly levelled. It harrows only the topsoil and gives a very nice finish for sowing. Required output is lower than that of the rotary hoe which allows also a higher working speed. Working depth is adjusted with the rear field roller which levels the seeding bed during operation. With the optional seeding unit you are able to make a ready lawn surface on one pass.

Rotary harrows are most commonly used for lighter topsoil levelling. The soil is normally not milled as deep or as thoroughly as with a rotary hoe.

- Professional, efficient rotary harrow for topsoil leveling
- Top grade finish with just one pass
- Can be equipped with seeding unit
- Requires less power than rotary hoe



Optional extras:

- Seeding unit for 1350 model (A21085)
- Seeding unit for 1500 model (A21193)
- Seeding unit for 1700 model (A415800)

Model	1200	1350	1500	1700
Working width	41.3 in	48.0 in	55.1 in	61.0 in
Roller width	47.2 in	53.1 in	59.1 in	67.0 in
Working depth	0 - 6.3 in			
Weight	397 lb	485 lb	550 lb	640 lb
Weight with seeding unit	-	575 lb	640 lb	730 lb
Product no	A21067	A21077	A21185	A21431

Model	220	225	423	523	528	530	630	635	640	735	755i	760i	860i	e5
1200														
1350														
1500														
1700														

* With Tier 4 Kubota V1505 engine



Compatible



Adaptable



Incompatible



Leveller HD

The HD leveller is an incredibly useful and efficient attachment for quick levelling of uneven ground, mulch, yards, driveways etc. It is most commonly used in:

- preliminary lawn bed levelling
- yard and driveway sand and gravel levelling
- levelling of uneven ground

The leveller can also be used for lifting job site materials like sod rolls, tools etc.



- **Bucket cutting edge in the front and in the rear, allows breaking and cutting of the ground**
- **Straight vertical levelling edge in the rear**
- **Grate at the front, for picking up stones**
- **Two hook type brackets in the front, for transporting a bucket etc.**
- **Scarifier bar in the rear, equipped with hooks. It can be turned manually in 5 different working depths, and can also be lifted up so that the leveller works without scarifying**

Working width	63.0 in
Total width	64.2 in
Length	41.3 in
Working depth	max. 4 in
Weight	380 lb
Product no.	A427450

220	225	423	523	528	530	630	635	640	735	755i	760i	860i	e5





Roller compactor

The roller compactor with mesh roller is a practical attachment for compacting soil when preparing for lawn seeding and right after lawn seeding. You are able to compact soil with the full 59.1 inch width of the roller and push down with the whole weight of the loader's front axle.

The other roller compactor model is equipped with a plain, hollow roller which can be filled with water (max. 44.1 gal). It is useful for preparing and compacting a newly installed sod and similar surfaces where a plain roller is a must and mesh rollers cannot be used. Both compactors can also be fitted with max. 4 pcs of Aviant 64 lbs back weights. The compactors can also be towed, if needed, with the A3748I drawbar mounted on the compactor.

- **Easy and economical compacting of lawns before and after seeding with the mesh roller**
- **Plain roller is useful for compacting a newly installed sod and similar surfaces; can be filled with water**
- **Both models can also be towed with the A3748I drawbar**
- **4 pcs Aviant 64 lbs back weights can be mounted to add weight**



Model	Mesh roller	Plain roller
Working width	59.1 in	59.1 in
Total width	63.2 in	63.2 in
Roller diameter	15.7 in	16.0 in
Length	24.0 in	24.0 in
Weight, without extra weights and water	220 lb	430 lb
Water volume	-	44.1 gal
Product no	A37064	A37488

220	225	423	523	528	530	630	635	640	735	755i	760i	860i	e5



Compatible



Adaptable



Incompatible



Front rake

Front rake is an uncomplicated and economical attachment for levelling of sand and gravel driveways, anywhere you want to have a nice looking finish. The spring loaded tines rake and level the ground efficiently. The rake can also be used for loosening and levelling of uneven soils.

There are two models available: one with normal tines and other with HD tines. The rake with stronger HD tines will also collect branches etc. heavier material when levelling the ground.

- **Economical leveler for sand gravel driveways**
- **Works on soils as well**
- **Two models available: with normal tines or with stronger HD tines**
- **Can be mounted on all Avant models**



Model	Standard	HD
Width	78.7 in	78.7 in
Tine height	9.6 in	16.5 in
Total height	22.1 in	27.4 in
Weight	77 lb	124 lb
Product no	A36968	A37357

220	225	423	523	528	530	630	635	640	735	755i	760i	860i	e5





Ripper

The ripper is an inexpensive and practically irreplaceable tool in ground works. With the ripper it is easy and effortless to remove roots as well as rocks even from hard packed ground. The replaceable hard metal teeth guarantee a long lifespan for the attachment.

The ripper is operated by pressing the three blades into the ground next to the object you wish to remove. When the teeth have sunk into the ground, tilt the ripper inwards and then lift the boom upwards which will bring the object on top of the ground.

- **An inexpensive tool for removing of rocks, tree stumps, roots etc. from the ground**
- **Eliminates a huge amount of manual work**



Width	20.0 in
Working depth	approx. 12.0 in
Weight	110 lb
Product no	A44412

220	225	423	523	528	530	630	635	640	735	755i	760i	860i	e5



Compatible



Adaptable



Incompatible

New



Mulcher CRI 400

Mulcher CRI400 is a heavy duty soil conditioner and vegetation remover. It clears vegetation and undergrowth and can crush small roots and tree stumps as well. This makes the mulcher a useful tool for clearing the soil and also for preparing it for seeding and planting. The rotor is equipped with replaceable carbide cutting teeth. Support skids are standard equipment as well. They are pivoted which means they follow the contours of the cultivated surface, allowing very easy and accurate working depth adjustment. The mulcher can also be used for removal of ice and hard packed snow on pavements, parking lots etc.

- **Heavy duty soil conditioner - can crush smaller roots, tree stumps and branches as well**
- **Rotor with carbide cutting teeth**
- **Hardox steel frame**
- **Bolt mounted counter blades**
- **Support skids as standard**
- **Possibility to turn the direction of the rotor**



Total width	68.9 in
Rotor width	53.1 in
Rotor diameter	15.7 in
Working depth	0 - 27.9 in
Height	26.4 in
Weight	1190 lb
Product no	A436164

220	225	423	523	528	530	630	635	640	735	755i	760i	860i	e5





Screening bucket

The new Avant screening bucket is a fast and efficient compact system for screening and blending soils, aggregates and compost. The durable and flexible star-shaped plastic Poly Star rollers screen without shredding the vegetation or crushing the aggregates into the finished screened product.

The unique design fitted with sealed bearings, self tensioning carbon belt driveline and flexible Poly Stars enables for a large screening area to create a low maintenance, fast and efficient screening system.

- **Separates stone/soil/vegetation**
- **Screens without crushing or shredding**
- **Suitable for different types of soil**

Width	47.24 in
Bucket volume	10.59 cu ft
Screening area	47.2 x 16.9 in
Weight	860 lb
Product no	A36503



220	225	423	523	528	530	630	635	640	735	755i	760i	860i	e5



Compatible



Adaptable



Incompatible



Mounting kit for stone installation clamp

For professional paving, a hydraulic stone installation clamp is a fast and easy way to lay paving stones. The installation clamp takes a whole layer of stones from the pallet, which then can be lifted directly to the area to be paved. Avant is an ideal machine for this job thanks to the articulated chassis which allows driving on the paved surfaces without damaging them, and thanks to the rigid articulation joint Avant loader is very stable also in paving jobs.

With the mounting kit it is easy to install on Avant loader practically any hydraulic stone installation clamp available from renowned manufacturers (Hunklinger, Optimas, Probst for example). The mounting kit is a complete "plug and play" kit which includes lifting boom, hydraulic rotator with continuous 360° rotation and electrically controlled hydraulics.

The stone installation clamp is mounted on the shaft of the mounting kit's hydraulic rotator and the clamp's hydraulic hoses are connected in the ports on the rotator. All functions of the stone installation clamp (rear/front grabbers, side grabbers, rotation) are operated with the Opticontrol attachment control system on the loader. Because the mounting kit already includes the rotator and control valve, they are not needed in the stone installation clamp itself.

- **"plug and play" mounting kit for hydraulic stone installation clamps**
- **Includes hydraulic rotator and electric control valve**
- **Operated with the Opticontrol attachment control system on Avant loader**

Lift capacity, stone installation clamp + load	1960 lb
Weight	145 lb
Product no	A436347

The optional Opticontrol is required on the loader.

220	225	423	523	528	530	630	635	640	735	755i	760i	860i	e5



New



Stone grab

The stone grab, equipped with rotator, allows grabbing, transporting and loading of different types of stones both lengthwise and crosswise. This makes it possible to pass through narrow places also with long kerb stones and enables loading in any direction. The grab is available either with a hydraulic rotator or as freely rotating version. Padded stone grabbers are available as an option. They allow grabbing the stone by pressing it. Stone grabbers come with a lock valve which prevents unintentional opening of the grab. If the loader is equipped with the 6 or 8 function joystick, all functions of the grab with hydraulic rotator (grab opening/closing, rotation) can be operated with the switches on the optional Opticontrol switch pack.



Option:
Lock valve, mounting kit, on grab cylinder A436627
Padded stone grabbers (kit includes lock valve) A429742

- Available with hydraulic rotator or as freely rotating version
- Can be equipped with padded stone grabbers



Rotation type	Freely rotating	Hydraulic rotation
Grapple opening diameter	48.1 in	48.1 in
Weight	255 lb	300 lb
Product no	A37457	A37456

The optional Opticontrol is recommended with grab with hydraulic rotator, for operating the grab opening/closing and rotation (requires also 6 or 8 function joystick on the loader).

220	225	423	523	528	530	630	635	640	735	755i	760i	860i	e5



Compatible



Adaptable



Incompatible



Grabbing tool

Grabbing tool is mainly intended for lifting and handling of round objects. It is especially suited for lifting of barrels and plant and tree pots. Grabbing force can be adjusted, which means all kinds of objects can be handled without damaging them.

Grabbing tool is equipped with two smaller, rubber padded grabs which allow handling of smaller and more fragile objects as well. When the grab is opened completely it can take larger objects like barrels, bigger plant pots etc.

- **Easiest way to lift and transport plants, trees, barrels etc. without damaging them**
- **Excellent tool for nurseries and landscapers**
- **With the optional tilt adapter or attachment rotator mounted on the grabbing tool it is also possible to rotate the objects**



Option:

Conical grabbers – for objects with conical shape like plant pots A421030

Barrel grabbers – for completely round objects like barrels A421031

Tilt adapter 90 degrees A36505

Attachment rotator A424406

(requires second auxiliary hydraulics outlet in the front)

Min. grab diameter	10.0 in
Max. grab diameter	47.0 in
Max. load	1430 lb
Weight	210 lb
Product no	A34290

220	225	423	523	528	530	630	635	640	735	755i	760i	860i	e5





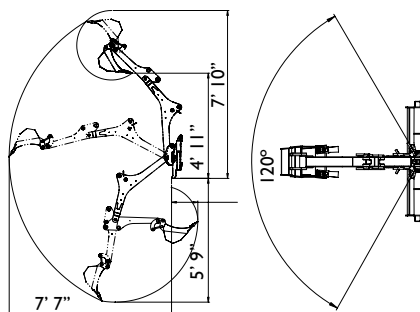
Backhoe 170

Avant backhoe 170 is a compact digging unit, intended mainly for Avant 200 series. The main focus of the design is user friendliness and straight forward construction. Backhoe 170 is a small backhoe, which is at its best in tight situations where space is limited.

Boom movements are smooth and precise, which makes operation easier for less experienced users. To facilitate digging, the frame of the backhoe is as low as possible, which gives unrestricted visibility to the work area.

- **Strong and compact backhoe**
- **Easy to connect and disconnect to Avant**
- **Smooth movements with precise control valve, easy to operate**

Max. Digging depth	66.9 in
Standard bucket	9.8 in / A415232
Weight	397 lb
Product no	A36848



Optional extras:

Bucket 15.7 in A415230

Bucket 29.5 in A35564

220	225	423	523	528	530	630	635	640	735	755i	760i	860i	e5



Compatible



Adaptable



Incompatible



Backhoe 210

Avant backhoe 210's main focus in design is user friendliness and straight forward construction.

Boom movement speeds are steplessly adjustable, which makes operation easier, especially for inexperienced users. To facilitate digging, the frame of the backhoe is as low as possible, which gives unrestricted visibility to the work area.



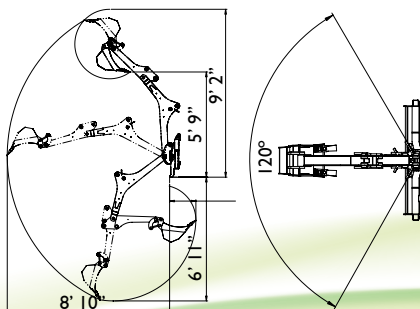
Optional extras:

Bucket 9.8 in A415232

Bucket 29.5 in A35564

- A powerful, strong and compact backhoe
- Easy to connect and disconnect to Avant
- Smooth movements with precise control valve, easy to operate
- Uncomplicated and economical backhoe

Max. Digging depth	82.7 in
Standard bucket	15.7 in / A415230
Weight	419 lb
Product no	A33747



220	225	423	523	528	530	630	635	640	735	755i	760i	860i	e5



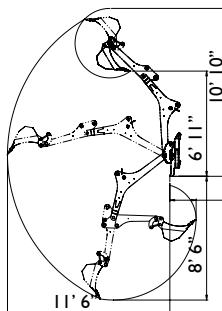
Renewed



Backhoe 260

The Backhoe 260 has many advanced features: boom swing happens with two hydraulic cylinders, that gives more exact boom movements when swinging and requires less service. Swing angle is 170 degrees.

Backhoe 260 is equipped with hydraulic outriggers as standard. The operator can easily adjust the outriggers with the lever on the backhoe control valve. This allows quick and easy set up on uneven terrains. Changing of bucket is easy thanks to the quick attach mechanism. Mounting the backhoe on Avant is fast, and easy.



Optional extras:

- Bucket 9.8 in A414301
- Bucket 29.5 in A35230
- Bucket 39.4 in A35383
- Quick attach adapter S30-150 with sideways tilt A35249, (not when thumb grab A435527)
- Trapezoidal bucket 25.6 in A21638
- Trapezoidal bucket 35.9 in A36374
- Thumb grab A435527 (not when bucket tilt adapter A35249)



- **Powerful and professional backhoe with good outreach**
- **Hydraulic outriggers**
- **Bucket quick attach system S30-150**
- **170 degree boom swing angle with consistent speed**
- **Dozer blade on front frame**
- **Several bucket options**
- **Bucket sideways tilt adapter available as an option**

Max. Digging depth	102 in
Width	51.2 in
Boom swing angle	170 °
Standard bucket	15.7 in / A414304
Weight	925 lb
Product no	A37510

220	225	423	523	528	530	630	635	640	735	755i	760i	860i	e5



Compatible



Adaptable



Incompatible



Backhoe 260 with remote control

Avant backhoe 260 is available also with radio remote control, and the unit is also equipped with a remote control wire. It allows the operator to stand next to the unit when digging and have a perfect, unrestricted field of vision to the work area. This is very useful for utility jobs, cemeteries and similar places where space is limited and exceptionally exact digging with total visibility is necessary.

The backhoe is equipped with a proportional control valve which guarantees easy and smooth operation and very exact movements of the booms and bucket with the joysticks of the remote control unit. If necessary, the movements can also be fine tuned. The required safety features like emergency stop, blinking light etc. are also fitted. Range of the radio remote control unit is about 330 ft. It is equipped with a rechargeable battery with approx. 11 hour working cycle. Battery charging time is 4 hours. Battery charger is included – a 12V charger or a 80-230V mains current charger.

Backhoe 260 with remote control is a product of its own – the remote control system cannot be retrofitted on a standard backhoe 260. Optional extras:

- Bucket 9.8 in A414301
- Bucket 29.5 in A35230
- Bucket 39.4 in A35383
- Quick attach adapter S30-150 with sideways tilt A35249 (not when thumb grab A435527)
- Trapezoidal bucket 25.6 in A21638
- Trapezoidal bucket 35.9 in A36374
- Thumb grab A435527 (not when bucket tilt adapter A35249)



- **Perfect, unrestricted field of vision to the whole digging area**
- **Equipped with proportional control valve => stepless, smooth and exact movements with the joysticks of the remote control unit**
- **Range of remote control about 330 ft**
- **Remote control battery is rechargeable, working cycle about 11 hours – charging time 4 hours**

Max. Digging depth	102 in
Width	51.2 in
Boom swing angle	170 °
Standard bucket	15.7 in / A414304
Weight	925 lb
Product no 500-700 series	A43385 I
Product no 800 series	A443267

220	225	423	523	528	530	630	635	640	735	755i	760i	860i	e5



Compatible



Adaptable



Incompatible



Mini digger

Avant mini digger is an efficient solution for small digging operations where maximum digging depth of 47.2 in or 59.1 in is enough. It mounts directly on the quick attach plate of the loader and is operated with the auxiliary hydraulics control lever. Dumping to the side is happens by turning the steering wheel of the Avant.

Mini digger 150 is equipped with the S30 bucket quick attach system (same as on backhoe 260), which makes changing of bucket fast and easy - and the bucket can also be mounted pointing forward if necessary. Bucket tilt adapter for mini digger 150 is available as an option. For model 150 bucket needs to be ordered separately.



Option:

Bucket tilt adapter (Mini digger 150) A35320

- **Efficient and economical solution for smaller digging jobs**
- **Very fast to mount on Avant**
- **Simple and light to transport from job site to another**
- **High unloading height**
- **Material can easily be transported further away**
- **Bucket tilt adapter available as an option for mini digger 150**

Model	120	150
Max. digging depth	47.2 in	59.1 in
Standard bucket	9.8 in	-
Weight	155 lb	187 lb
Product no	A36822	A36856

Buckets	Mini digger 120	Mini digger 150
9.8 lb	A415232	A414301
15.7 in	A415230	A414304
29.5 in	A35564	A35230
39.4 in	-	A35383
Trapezoidal bucket 650 mm		A21638
Trapezoidal bucket 912 mm		A36374

Model	220	225	423	523	528	530	630	635	640	735	755i	760i	860i	e5
120														
150														



Compatible



Adaptable



Incompatible



Multi function drive unit

The multi function drive unit with square shaft can be fitted with various attachments: concrete mixing drum, screw cone log splitter, screening drum, cable/hose reel, carousel broom, rotary hoe and screw pile adapter.

In addition, there is a 90 degree angle adapter available as an option, on which the drive unit can be mounted. It turns the the drive unit 90° to the left or right. This means that for instance the carousel broom sweeps on the left side of the loader, and the cable/hose reel is crosswise to the loader and winds the cable longitudinally (in parallel to the loader).

- **Can be fitted with several attachments: Concrete mixing drum, Screw cone log splitter, Screening drum, Cable/hose reel, Carousel broom, Rotary hoe, Angle adapter 90°, Screw pile adapter**
- **Torque 1000 lb/ft**
- **Auger drill bit adapter available as an option, enables use as auger drive unit**



Option: Auger drill bit adapter A42I527

220	225	423	523	528	530	630	635	640	735	755i	760i	860i	e5



Attachments on multi function drive unit



A37395 Concrete mixing drum

- Volume: 37 gal water, 24 gal ready concrete
- Length 29.9 in
- Width 23.6 in
- Weight 110 lb



A37311 Cable/hose reel

- Inside width 15.7 in
- Total width 22 in
- Reel diameter 7.5 in
- End plate diameter 19.7 in
- Weight 55 lb
- Can also be mounted on the A37323 Angle adapter 90° => winds the cable in parallel to the loader



A418530 Screw pile adapter

- Easy way of making screw pile foundations, saves a lot of manual work
- Mounts on any Avant auger drive unit
- Fits on Ø 2.4 in screw piles



A37207 Screening drum

- Intended for screening of soil, gravel and sand
- Volume: 24 gal
- Screening sieve with 2x2 in holes – included also a separate 0.9x0.9 in sieve, which is bolted on the drum when finer screening is required
- Length 23.8 in
- Width 19.7 in
- Height 18.2 in
- Weight 165 lb



A37500 Screw cone log splitter

- Log splitter with a conical splitting screw
- Splitting screw equipped with a replaceable tip
- Also equipped with a log holder bar which prevents the log from rotating during splitting
- Weight 66 lb



A37317 Carousel broom

- Same Ø 39.4 in replaceable brush as on A2971 Carousel broom, part no. A32698
- Weight 150 lb
- Can also be mounted on the A37323 Angle adapter 90° => sweeps on the left side of the loader



A37491 Rotary hoe

- For small scale soil cultivating
- Equipped with two knife type blades
- Cultivating depth max. 6.3 in
- Length 20.9 in
- Width 6.1 in
- Height 11.1 in
- Weight 33 lb



A37323 Angle adapter 90°

- Turns the multi function drive unit to point to the left or right
- Length 24.8 in
- Width 25.6 in
- Height 11.8 in
- Weight 90 lb



A429932 XL weed brush

- Consists of 3 pcs Ø 23.6" steel brushes mounted together
- Max. diameter 48.4"
- Height 14.8"
- Weight 140 lb



A433646 Carousel broom, steel

- Ø 39.4" brush with steel bristles
- Weight 150 lb



A431157 XL wire rope brush

- Brush with 32 pcs heavy duty wire rope bundles
- Max. diameter 40"
- Height 14.6"
- Weight 80 lb



Auger

Avant's drilling drives are the ultimate in performance, quality and cost effectiveness. Using only the highest grade materials and strictest quality control, Avant offers the highest quality range of auger drives on the market today.

Fitted with Eaton bell motors and input housing, the innovative design allows the gearbox to go down the hole to maximize drilling depth without extensions, eliminating downtime and minimizes maintenance, optimizing your returns.



Model	Auger	Torque	Product no
Direct drive	6-12 in	1000 lb/ft	A37190*
DG1DSS	6-24 in	1467 lb/ft	DG1DSS
DG3DSS	6-36 in	2829 lb/ft	DG3DSS

* see also page 116

Product no.	Auger Size	Drill Bit	Product no.	Auger Size	Drill Bit	Product no.	Auger Size	Drill Bit
DG06EA	6 in	Earth	DG06HD	6 in	Tungsten	DG06RT	6 in	Rock
DG08EA	8 in	Earth	DG08HD	8 in	Tungsten	DG08RT	8 in	Rock
DG09EA	9 in	Earth	DG09HD	9 in	Tungsten	DG09RT	9 in	Rock
DG10EA	10 in	Earth	DG10HD	10 in	Tungsten	DG10RT	10 in	Rock
DG12EA	12 in	Earth	DG12HD	12 in	Tungsten	DG12RT	12 in	Rock
DG14EA	14 in	Earth	DG14HD	14 in	Tungsten	DG14RT	14 in	Rock
DG16EA	16 in	Earth	DG16HD	16 in	Tungsten	DG16RT	16 in	Rock
DG18EA	18 in	Earth	DG18HD	18 in	Tungsten	DG18RT	18 in	Rock
DG20EA	20 in	Earth	DG20HD	20 in	Tungsten	DG20RT	20 in	Rock
DG24EA	24 in	Earth	DG24HD	24 in	Tungsten	DG24RT	24 in	Rock
DG30EA	30 in	Earth	DG30HD	30 in	Tungsten	DGEXT2	24 in	Extension
DG36EA	36 in	Earth	DG36HD	36 in	Tungsten	DGEXT3	36 in	Extension

Model	220	225	423	523	528	530	630	635	640	735	755i	760i	860i	e5
Direct drive														
DG1DSS														
DG3DSS														





Trencher

The Avant trencher is a compact yet powerful tool. It features an adjustable depth control foot which ensures the operator digs at a set depth (up to 36 in) at all times and efficient spoil removal for effective compaction back into the trench. Three different chains types and three chain widths are available for trenching in different ground conditions from general earth, to rocky ground, and even frozen ground.

The Avant DG90 Trenchers are ideal for laying pipe for irrigation, underground power and communications, road repairs and general construction.



Model	Digging Width	Chain Type	Motor Disp.
DG904EA	4 in	Earth	6.2 cu in
DG904CA	4 in	Combo	6.2 cu in
DG904SA	4 in	Shark Tooth	6.2 cu in
DG906EA	6 in	Earth	6.2 cu in
DG906CA	6 in	Combo	6.2 cu in
DG906SA	6 in	Shark Tooth	6.2 cu in
DG908EA	8 in	Earth	6.2 cu in
DG908CA	8 in	Combo	6.2 cu in
DG908SA	8 in	Shark Tooth	6.2 cu in
DG904ED	4 in	Earth	8.0 cu in
DG904CD	4 in	Combo	8.0 cu in
DG904SD	4 in	Shark Tooth	8.0 cu in
DG906ED	6 in	Earth	8.0 cu in
DG906CD	6 in	Combo	8.0 cu in
DG906SD	6 in	Shark Tooth	8.0 cu in
DG908ED	8 in	Earth	8.0 cu in
DG908CD	8 in	Combo	8.0 cu in
DG908SD	8 in	Shark Tooth	8.0 cu in

Model	220	225	423	523	528	530	630	635	640	735	755i	760i	860i	e5
DG90**A														
DG90**D														



Compatible



Adaptable



Incompatible



Hydraulic breaker

Avant breakers are specially designed for use with Avant loaders. From three different models you can find suitable for all 400, 500, 600, 700, 800 and e series models.

Avant loader with breaker is a very efficient tool in demolition and refurbishing operations: do the demolition with Avant and breaker, take the debris away with Avant and bucket – very fast and effective. Another benefit of this combination is its compact dimensions: Avant breakers are the fastest, easiest and most efficient breakers for Avant loaders. All hoses, couplings and quick attach brackets are included in the package. In addition, breakers are pre-adjusted at the factory to suit Avant loaders.



- **Top quality sound isolated**
Avant breakers are quiet and powerful
- **Breakers are pre-adjusted at the factory to suit Avant loaders. There is a breaker for each Avant model**
- **All hoses and adapter plates are included in the packaging so the combination is all ready for work**
- **Multiple tools available for example: chisel, wedge,moil point and blunt.**

Model	Impact rate (frequency)	Weight	Product no
B105	600-3200 bpm	231 lb	A36423
B155	800-3000 bpm	342 lb	A36424
B230	700-2600 bpm	507 lb	A36425

Model	220	225	423	523	528	530	630	635	640	735	755i	760i	860i	e5
B105														
B155														
B230								*	*					

120 Compatible Adaptable Incompatible

* With Tier 4 Kubota V1505 engine

New



Asphalt spreader

Asphalt spreader is an efficient and easy to operate attachment for smaller repairs on roads, pavements, yards etc. It is intended for spreading mastic asphalt (guss asphalt) which is made especially for surface repairs. Therefore the spreader doesn't work with traditional asphalt.

The 27.6 in wide asphalt strip is spread by driving forward with the loader. This way the new asphalt surface runs between the wheels of the loader. Hydraulically operated hatch at the bottom of the spreader allows spreading right amount of asphalt to the rear compacting plate which compacts the asphalt - additional compacting with an asphalt roller is not necessary. The unit moves on skid shoes made of Hardox steel.

The required aggregate (sand) spreading on asphalt - to make the new asphalt less slippery - can be done at the same time with the rear mounted Avant sand spreader.



- Easy and fast asphalt surface repairs on roads, pavements, parking lots etc.
- Works with mastic asphalt
- Rear compacting plate on the spreader compacts the asphalt, additional finishing with asphalt roller is not necessary
- Aggregate spreading can be done at the same time with the rear mounted Avant sand spreader

Working width	27.6 in
Total width	35.5 in
Volume	95 gal
Length	41.3 in
Height	35.9 in
Compaction plate height adjustment	0-1.6 in
Weight	530 lb
Product no	A427857

220	225	423	523	528	530	630	635	640	735	755i	760i	860i	e5



Compatible



Adaptable



Incompatible



Asphalt grinder

The strong and efficient asphalt grinder (also called cold planer) is an ideal attachment for asphalt road and pavement repairs and utility jobs. It grinds away the asphalt surface up to 3.1 in depth, making repair of potholes, utility cuts, small overlays and edge repairs fast and easy. Different types of teeth are available for grinding of asphalt or concrete. Water spraying system is available as an option. It is mounted on top of the planer and is equipped with 15.9 gal water tank and nozzle bar (same as on Avant collecting broom), membrane pump and strainer filter. Also, 3 pcs Avant 64 lb counterweights can be mounted on the water tank support frame to add weight when grinding hard asphalt etc. material.

If side shift is needed, the hydraulic side shift adapter A37235 is available as an option. It requires the optional second auxiliary hydraulics front outlet on the loader.

Option: Water spraying system

- Mounts on top of the grinder
- Water tank 15.9 gal + nozzle bar (same as on Avant 59.1 in collecting broom & bucket broom), membrane pump & strainer filter
- Max. 3 pcs Avant 64 lb counterweights A35957 can be mounted on the water tank support frame
- Product no. A37386



- **Efficient grinder for asphalt road and pavement repairs and utility jobs**
- **Different type of teeth available**
- **Hydraulic side shift adapter and water spraying system for dust binding available as an option**

Working width	11.8 in
Total width	26.0 in
Grinding depth	0-3.1 in
No. of cutting teeth	29 pcs
Height	18.9 in
Length	31.9 in
Weight	540 lb
Product no	A432621

220	225	423	523	528	530	630	635	640	735	755i	760i	860i	e5





Concrete mixing bucket

Concrete mixing bucket is a handy tool when you need to make concrete without electricity or when you need to transport or lift the concrete to a place hard to access. This model is equipped with a 15.7 inch screw shaft and a guard grill on the bucket. The bucket is emptied from the bottom hatch in the middle of the bucket. Hatch opening is powered by a hydraulic cylinder controlled with an electric directional valve, operation from the driver's seat with an electric switch. The bucket is also equipped with a flexible emptying tube which mounts on the bottom hatch.

- **Easy and efficient way to make concrete in places where electricity is not available**
- **The mixed concrete is easy and effortless to transport and pour into desired place**
- **Self loading - sand can be taken to the bucket directly from the pile**
- **Concrete can be poured to over 6 feet height**

Total width	58.7 in
Screw shaft diameter	15.7 in
Volume	7.4 cu ft
Empty weight	660 lb
Weight at max. capacity	1750 lb
Unloading hatch diameter	7.1 in
Emptying tube length	53.1 in
Product no., emptying in the middle	A36473
Product no., emptying on the left	A37241



220	225	423	523	528	530	630	635	640	735	755i	760i	860i	e5



Compatible



Adaptable



Incompatible

Vibrating plate

Digging and construction

Vibrating plate is destined for earth compacting and is easy to attach to an Avant. Compacting is easy and safe with the vibrating plate connected to Avant's quick attach plate – the operator is not exposed to vibrations or excessive noise.



- **Efficient compacting also in places where bigger compactors don't fit**
- **Fast and easy mounting on Avant**

Weight	330 lb
Plate size	11.2 x 19.7 in
Impact force	1985 lb
Impact rate	2000 bpm
Product no	A21012

220	225	423	523	528	530	630	635	640	735	755i	760i	860i	e5

Compatible Adaptable Incompatible

Drum type concrete mixer

Concrete mixing drum is a handy tool when you need to make concrete without electricity or when you need to transport or lift the concrete to a place that is hard to reach. Mixing is done hydraulically and emptying is done simply by tipping the drum forward.



- **Economical attachment for more occasional concrete mixing**
- **Easy way to make concrete in places where electricity is not available**
- **Ready mixed concrete is easy to transport and lift to desired place**

Volume	3.5 cu ft / 6.0 cu ft
Operation	hydraulic
Weight	143 lb
Product no	A36951

220	225	423	523	528	530	630	635	640	735	755i	760i	860i	e5

Compatible Adaptable Incompatible



Disc scraper

Disc scraper is an excellent and cost efficient tool for removing of carpet and floor tiles in demolition and refurbishing jobs. The durable disc takes off old carpet and tiles quickly and efficiently.

- **Efficient and economical carpet remover**
- **Fits on all Avants**
- **Equipped with two Avant 64 lb counterweights A35957**



Disc diameter	22.0 in
Length	37.8 in
Width	22.0 in
Height	20.0 in
Weight	183 lb
Product no	A36910

220	225	423	523	528	530	630	635	640	735	755i	760i	860i	e5



Compatible



Adaptable



Incompatible

Submersible pump

Submersible pump is a very useful attachment for situations where larger amounts of water or other fluids need to be drained from trenches, pits, wells etc. Pumping capacity is as high as 528 gal/min and fluid can be taken up from max. 65 ft depth. The pump is equipped with a 54 ft long discharge hose. The 32 ft long hydraulic hose kit is the same as for handheld tools.



- **Efficient pump for draining of water or other fluids from trenches, pits, wells etc.**
- **Fluid can be taken up from max. 65 ft depth**
- **Equipped with 54 ft long discharge hose**

Pumping capacity max.	528 gal/min
Pumping depth max.	65 ft
Aux. hydr. oil flow max.	10 gal/min
Width	13.8 in
Height	27.6 in
Weight	44 lb
Product no.	A36708

Option:
Hydraulic hose kit, 32 ft, with multi-connector A36707

220	225	423	523	528	530	630	635	640	735	755i	760i	860i	e5

Compatible Adaptable Incompatible

All-round grapple

This versatile tool can be used for lifting and transporting of many different types of materials which cannot be handled with a normal bucket or pallet fork. The grapple is equipped with a hydraulic cylinder in the upper grapple part and it opens all the way up in vertical position. This, together with the pressing force of the cylinder, gives excellent loading and handling capabilities. Total width is 35.4 in - this allows traveling through narrow doorways and working in small spaces.



- **Simple and robust hydraulic grapple for handling of various materials**

Width	Weight	Product no
35.4 in	143 lb	A110

220	225	423	523	528	530	630	635	640	735	755i	760i	860i	e5

Compatible Adaptable Incompatible



Silage fork

A robust silage fork equipped with a powerful hydraulic cylinder, can be fitted on all Avant loader models. The strong blade type pins of the grapple penetrate into all types of feed. The fork has replaceable lower tines made of reinforced steel. The grapple goes up to vertical position and this, together with the powerful cylinder enables easy grabbing e.g. on a round bale.

- **Compact model, which is well suited for silage distributing in small and confined places.**
- **The front edges on the forks are rounded, which offers a smaller turning diameter.**
- **Mounting plate which increases tipping angle by 17 degrees is available as an option**



Option:

Mounting plate which increases tipping angle by 17 degrees A36337
(only for special applications, risk of puncturing the front tires)

Width	Weight	Product no
31.5 in	265 lb	A428328
35.5 in	280 lb	A36299
41.3 in	305 lb	A36313
51.2 in	355 lb	A36319

220	225	423	523	528	530	630	635	640	735	755i	760i	860i	e5



Compatible



Adaptable



Incompatible



XL Silage grab

The larger silage grab series is intended for Avant 500, 600, 700 and 800 series loaders, with three different widths to match machines perfectly. The new series can carry up to 30 % more silage without losing visibility on the feeding table. Open grab construction on the top offers better visibility when the grab is open. Strong heavy duty construction with two cylinders. Forged bolt-on tines also on the top grab.

- **Larger silage grab model, designed for larger cow houses and bigger estates**
- **The top grab construction is completely open from the middle → Improved visibility when driving while the grab is open.**
- **Top grab has two cylinders for improved compression power**



Optional extras:
Mounting bracket which increases tipping angle by 17 degrees A34587

Width	Weight	Product no
51.2 in	507 lb	A441007
57.1 in	540 lb	A440998
63.0 in	573 lb	A440586

220	225	423	523	528	530	630	635	640	735	755i	760i	860i	e5





Silage dozer blade

Intended for moving uneaten silage back to the cattle on the feeding table. Mounts on the normal or XL silage grab simply by closing the upper grapple on the dozer blade. The blade can be grabbed with the silage grab from two sides which means that it can move the silage both to the right or to the left. Equipped with a durable nylon blade.

- **Easy and economical way to push uneaten silage back to the cattle on the feeding table**
- **Mounts on normal and XL silage grabs**
- **Can be grabbed from two sides – moves silage to the right or to the left**



Blade length	70.9 in
Working width	45.7 in
Weight	200 lb
Product no	A37111

220	225	423	523	528	530	630	635	640	735	755i	760i	860i	e5



Compatible



Adaptable



Incompatible



Feeding table cleaning blade

This cleaning blade is specially designed for clearing the cattle feeding table before distributing new silage to the table. The cleaning blade can be mounted by driving the silage fork into the blade, no need to get out of the driver's seat which speeds up the cleaning process, because no attachment change is necessary. The cleaning blade has a rubber lip on the lower surface that ensures good cleaning result.

ATTENTION! Available only together with Avant silage forks.

- The easiest way to clean the cattle feeding table
- Mounts on Avant silage forks: drive the fork into the blade with the grapple open and press the grapple down to lock the blade → no need to get out of the driver's seat.

For silage fork

Width	47.2 in
Side extension width	21.7 in
Weight	110 lb
Product no	A2936

For XL silage grab

Width	65.0 in
Side extension width	21.7 in
Weight	165 lb
Product no	A35512



Optional extras:

Extra side extension A46337

220	225	423	523	528	530	630	635	640	735	755i	760i	860i	e5





Silage dispenser

This dispenser bucket is equipped with hydraulically driven elevator in the bottom and discharging to both right and left side. Especially recommended for precision chopped silage and feeding stuffs made with feed mixers. The dispenser bucket can be filled like a normal bucket directly from floor level.

Side hatches can be opened and closed manually - hydraulic operation of the hatches is available as an option.

- **Quick and easy way to distribute silage**
- **Silage can be distributed to the left or the right side**
- **Can be tilted down to ground level and filled like a normal bucket**
- **Manual side hatch adjustment as standard, hydraulic side hatch operation available as an option**



Option

A429734 Hydraulic side hatch operation

Volume	23.0 cu ft
Bucket width	43.3 in
Total width	53.5 in
Height	47.2 in
Weight	720 lb
Product no	A424013

If the dispenser is equipped with the hydraulic side hatch operation, the optional attachment control switch pack is recommended on the loader.

220	225	423	523	528	530	630	635	640	735	755i	760i	860i	e5



Compatible



Adaptable



Incompatible



Feed mover screw

Efficient way of moving uneaten feed back in front of the cattle. When moving, the screw mixes the feed and the fresh feed remains on top.

With the feed mover screw drive speed can be higher, 6 mph. Feed can be moved both to the right and to the left simply by changing the rotation direction. The plastic scraper blade at the rear of the attachment cleans the feeding table very efficiently.

- **Fast and easy way of moving feed to the animals**
- **Discharge in both directions**
- **High efficiency, also on larger farms**
- **Scraper blade cleans the feeding table efficiently**



Working width	55.1 in
Total width	64.4 in
Weight	265 lb
Product no	A21506

220	225	423	523	528	530	630	635	640	735	755i	760i	860i	e5





Silage block cutter

Powerful and robust silage cutters with two hydraulic cylinders. With the silage cutter you can easily cut silage directly from the silo and take it to the cattle. Cutting blades are made of special steel; they cut very efficiently and leave a clean and even surface in the silo. This prevents air getting into silage and warming up. Thanks to the open design of the cutting blade visibility during silage distribution is very good. Lower tines are made of hardened steel.

- **Strong and robust design, cuts efficiently also tightly packed silage**
- **39.4" cutter and 51.2" cutter**
- **Open design allows for good visibility also when distributing the silage**
- **Strong lightweight construction**
- **Tines made of hardened steel**



Width	39.4 in	51.2 in
Weight	540 lb	617 lb
Product no	A21276	A21257

220	225	423	523	528	530	630	635	640	735	755i	760i	860i	e5



Compatible



Adaptable



Incompatible



Carousel broom

The hydraulically operated carousel broom is a useful attachment when sweeping materials to the side or away from the wall. Rotates in both directions, can be angled manually to both sides by max. 57 degrees (42.9 in), which allows sweeping next to the wall. Carousel broom can be used for various sweeping tasks especially in farm environment.

- **Strong broom, moves materials efficiently**
- **Side shift allows brushing next to the wall also**
- **Rotates in both directions**
- **Can be turned manually to both sides, in different positions, by max. 57 degrees (42.9 in) – allows sweeping next to the wall also**
- **Equipped with replaceable 39.4 in diameter nylon brush**

Width	39.4 in
Broom diameter	39.4 in
Turning angle max.	+/- 57 °
Broom material	Nylon
Weight	154 lb
Product no	A2971



220	225	423	523	528	530	630	635	640	735	755i	760i	860i	e5





Round bale grab

With the round bale grab you can lift and transport wrapped silage bales, hay bales and other round bales without damaging the plastic wrapping or net. Sturdy, yet light construction allows best possible effective load (see the table below).

- **The round bale grab transports all wrapped bales without damaging the wrappings**
- **With Avant and bale grab you are able to pile three round bales on top of each other**



Weight	265 lb
Max. bale weight	
Avant 400 series	880 lb
Avant 520/523	1215 - 1435 lb
Avant 528/530	1875 - 2095 lb
Avant 600 series	2095 - 2315 lb
Avant 700 series	2425 - 2645 lb
Avant 800 series	2425 - 2645 lb
Max. grab width	59.0 in
Bale diameter	37.4 - 57.1 in
Product no	A21166

220	225	423	523	528	530	630	635	640	735	755i	760i	860i	e5



Compatible



Adaptable



Incompatible



Bale handler

Bale handler is an economical way to handle wrapped bales, without damaging the plastic wrapping. Distance between the forks can be adjusted manually. Bale handler is a good choice if the bales can always be handled sideways and don't need to be grabbed.

- **Economical way to handle wrapped bales**
- **Adjustable fork width**
- **Useful attachment for situations where bales don't need to be grabbed**
- **Equipped with load support frame**



Width min.	40.7 in
Weight	183 lb
Product no	A36262

220	225	423	523	528	530	630	635	640	735	755i	760i	860i	e5





Bale fork

With the round bale fork transporting and lifting of unwrapped round bales is easy and safe. Square bale fork makes it easy and safe to transport and lift unwrapped square bales.

Strong and simple construction ensures a long lifespan.

- **Easy and economical way to lift and transport bales**
- **Two models: for round and square bales**

Model	Square bale fork	Round bale fork
Width	39.6 in	48.0 in
Length	45.1 in	45.3 in
Weight	130 lb	120 lb
Tines	3 pcs	2 pcs
Prod. no	A410225	A410224



220	225	423	523	528	530	630	635	640	735	755i	760i	860i	e5



Compatible



Adaptable



Incompatible



Round bale splitter

Avant round bale splitter splits also frozen bales which are otherwise hard to handle.

Splitting is fast and efficient thanks to the form of the cutting blade and the strong hydraulic cylinder.

The bale can also be transported with the splitter.

Wide and open design allows splitting of various size bales.

- **Efficient round bale splitter, splits also frozen bales**
- **Bales can also be transported with the splitter, without splitting**
- **Wide and open design allows splitting of various size bales**



Splitting force	48500 lb
Tines	2 pcs long, 2 pcs short
Cutting blade length	78.2 in
Total length	80.7 in
Width	49.2 in
Height with blade up	86.6 in
Height with blade down	38.6 in
Weight	670 lb
Product no	A36199

220	225	423	523	528	530	630	635	640	735	755i	760i	860i	e5





Bedding distributor bucket

The bedding distributor bucket is intended for distribution of different types of beddings. The bucket is equipped with a 11.8 in wide belt, which allows distribution of chopped straw, sawdust, peat, bark, wood shavings, sand and lime. Belt speed is steplessly adjustable.

The bucket is equipped with a mixing shaft which distributes the material evenly on the belt. Discharge to the left or to the right. Rubber scraper blade, designed for cleaning the floor grates, is available as an option. It mounts under the bucket.

- **Efficient distribution of various types of beddings**
- **Equipped with 11.8 in wide belt - belt speed steplessly adjustable by adjusting engine RPM's**
- **Discharge to the left or to the right**
- **Rubber scraper blade for floor cleaning available as an option**



Volume	28.3 cu ft
Belt width	11.8 in
Belt speed	0-33 ft/s, steplessly adjustable
Width	55.1 in
Weight	750 lb
Product no	A36532

Option: Rubber scraper blade A37162

220	225	423	523	528	530	630	635	640	735	755i	760i	860i	e5



Compatible



Adaptable



Incompatible

Manure fork

Avant manure fork is a very useful attachment, destined for detaching and handling of manure and similar materials. The strong tines, made of high tensile forged steel, penetrate also into compacted manure and can carry a heavy load.

- **Strong fork for handling of manure and similar materials**
- **Equipped with bolt-on replaceable tines, made of high tensile forged steel**



Width	43.3 in
Tine length	39.4 in
Fork length	43.7 in
Height	16.3 in
Weight	132 lb
Product no	A36038

220	225	423	523	528	530	630	635	640	735	755i	760i	860i	e5



Compatible



Adaptable



Incompatible

Grain/flour dispenser bucket

Avant grain dispenser is a 10.6 cubic foot bucket equipped with a hydraulic motor and a 8" screw, designed for distribution of flour, crushed grain etc. Discharge to the right side.

The edge of the grain dispenser tilts all the way down so that loading from ground level is easy. The bucket is available in two versions: with discharge either to the right side or to the left side.

- **Easy distribution of flour, crushed grain etc.**
- **Self-loading when needed: loading from ground level like with a normal bucket is also possible**
- **Two versions available: discharge to the right or to the left**



Volume	10.6 cu ft
Width	43.3 in
Weight	198 lb
Product no., discharge to the right	A1194
Product no., discharge to the left	A36559

220	225	423	523	528	530	630	635	640	735	755i	760i	860i	e5



Compatible



Adaptable



Incompatible

New

Farming and horse stables



Grain/flour dispenser bucket XL

The large volume 132 gal grain dispenser bucket is destined especially for bigger Avant loaders. It is an ideal attachment for distribution of flour, grain, crushed grain, different types of feed in granule form etc. Thanks to the strong Ø8.3 in hydraulic discharge screw which can be rotated in both directions the material can be distributed to the right or to the left side. The adjustable side hatches with proper sealing guarantee that the material doesn't fall out unintentionally. The bucket can be tilted all the way down so that loading from ground level is easy.

Two models available: with manual side hatch adjustment or with hydraulic side hatch adjustment.

- **Quick and easy way to distribute grain, crushed grain, flour etc. feed in granule form**
- **Material can be distributed to the left or the right side**
- **Can be tilted down to ground level and filled like a normal bucket**
- **Available with either manual or with hydraulic side hatch adjustment**



Volume	132 gal
Bucket width	51.2 in
Total width with rubber guide flaps	65 in
Height	37.8 in
Length	37.0 in
Weight	550 lb
Product no. manual side hatches	A435290
Product no. hydraulic side hatches	A439905

220	225	423	523	528	530	630	635	640	735	755i	760i	860i	e5



Compatible



Adaptable



Incompatible



Push broom

Push broom is a handy and inexpensive broom for cleaning of smaller areas. Push broom has no rotating parts - it simply pushes the material in front of the broom.

Push broom can also be used when making pavements. By pushing the filler sand sideways across the paving stones the sand will fall nicely between the stones.

- **An inexpensive and simple broom**
- **No rotating parts allows for less dust when brushing**
- **Works perfectly for horse stables, farms, other brushing applications**



Width	51.2 in	78.7 in
Weight	75 lb	190 lb
Product no	A34055	A36453

220	225	423	523	528	530	630	635	640	735	755i	760i	860i	e5





3 point hitch adapter

With the 3-point hitch adapter it is possible to move agricultural attachments with Avant. It makes moving your 3-point attachments to storage or for cleaning practical especially when space is limited and handling the implement with the tractor is difficult. Also the trailer ball hitches can be mounted on the 3-point hitch adapter.

Notice: Please also read the disclaimer on page 160 about mounting the adapter on Avant loaders

- Easy way to handle 3-point attachments with Avant
- Equipped with CAT2 tractor hitch as standard - CAT1 mounting kit is available as an option
- Avant trailer ball hitches can also be mounted, as an option



Option:

CAT1 mounting kit A418980

Trailer ball hitch A417323

Trailer ball hitch with towing pin A417337

Type	CAT 2
Weight	125 lb
Product no	A36433

220	225	423	523	528	530	630	635	640	735	755i	760i	860i	e5



Compatible



Adaptable



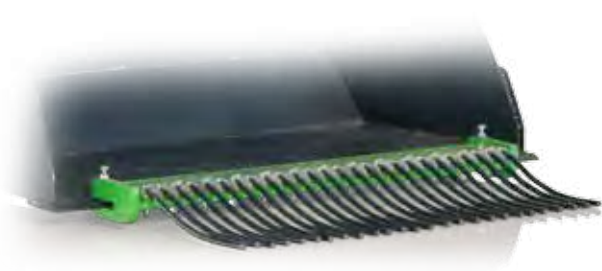
Incompatible



Horse manure collector

Horse manure collector is a simple and economical way to collect horse manure. It works well on many surfaces (saw dust, horse arenas). Mounts directly on any Avant bucket.

- Simple and economical way to collect horse manure
- Mounts on Avant general and light material buckets



Width	37.4 in
Weight	65 lb
Product no	A36292

220	225	423	523	528	530	630	635	640	735	755i	760i	860i	e5





Front cultivator

Front cultivator can be used together with the horse arena harrow. It is especially useful in a more compacted arena or an outdoor riding area. It is equipped with large tines which loosen the soil and make harrowing of the arena easier. Equipped with two wheels in the front.

- **Efficient and easy way to loosen compacted soil**
- **Equipped with replaceable tines**
- **Can be mounted on all Avants**



Width	55.5 in
Length	28.5 in
Height	24.8 in
Number of tines	7 pcs
Working depth	0 - 6 in
Weight	176 lb
Product no	A36555

220	225	423	523	528	530	630	635	640	735	755i	760i	860i	e5



Compatible



Adaptable



Incompatible



Horse arena harrow

The horse arena harrow is intended for levelling and loosening of horse arena riding surfaces. The harrow has two spring loaded tine rows which loosen the surface, a leveller that makes the surface completely even and a tilling roller that compacts the ground and leaves a finished surface perfectly suited for horse's hoof. The harrow doesn't damage the lower levels (understructure) of the riding surface.

The horse arena harrow features:

- A clearing shovel which takes away and levels the sand from the sides of the riding arena.
- A tilling roller that smoothens the harrowed ground and leaves a finished surface.
- A large wheel that protects the walls of the riding arena in case the harrow hits the wall.



Options:

- Manually operated support wheels, product no. A36593
- Hydraulically operated support wheels, product no. A37547. The loader must be equipped with the optional double acting rear auxiliary hydraulics outlet.
- Weights with handle, 64 lb, which can be mounted on the harrow to increase weight and make harrowing more efficient. With two weights the harrow works on almost any surface. The weight is the same extra weight as on Avant loader, product no. A35957.
- Water spraying system, product no. A37065

- A professional harrow that makes it easy to keep the horse arena in top condition
- Can be adjusted for several kinds of riding surfaces
- Once the adjustments have been done the harrow is very easy to use
- Two types of support wheels
 - manually or hydraulically operated - available as an option: the harrow can be lifted off the ground and towed to desired place
- Water spraying system available as an option, with 32 gal water tank



Working width	53.2 in
Weight (without 64 lb extra weights)	365 lb
Product no	A21646

220	225	423	523	528	530	630	635	640	735	755i	760i	860i	e5





Big bag transporter

With the big bag transporter you can lift and transport big bags safely and securely. This simple attachment makes loading of fertilizer or stacking big bags as easy as it can get.

- **An inexpensive and safe way to handle big bags**
- **Lift hook can be adjusted in four different heights between 47 - 71 in**



Lift hook height	47.0 - 71.0 in
Width	39.4 in
Weight	176 lb
Product no	A3622I

220	225	423	523	528	530	630	635	640	735	755i	760i	860i	e5



Compatible



Adaptable



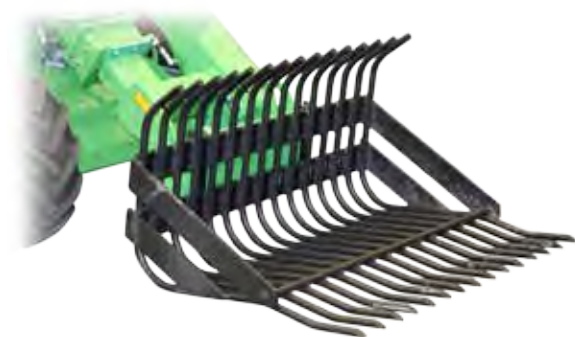
Incompatible



Stone collecting bucket

The stone collecting bucket - also known as riddle bucket - is intended mainly for collecting stones from the fields after the field has been harrowed. With an Avant 400, 500, 600, 700 or 800 series it is easy and fast to collect stones from nearby fields.

- **Easy and fast way to collect stones from fields**
- **Equipped with strong and durable bars**



Width	41.3 in	54.0 in
Bar diameter	0.9 in	1.2 in
Weight	210 lb	550 lb
Product no	A2999	A415432

Model	220	225	423	523	528	530	630	635	640	735	755i	760i	860i	e5
1050														
1370														



Compressor

Makes it possible to have compressed air anywhere you go. Creates maximum 105 gal/min at 115 PSI pressure. Can be used for running power tools and in circumstances where electricity is not available.



- Easy way to get compressed air e.g. for pneumatic power tools
- Makes it possible to fill large tires (agricultural & construction machines for example) in places where electricity is not available
- Fast cleaning of big machines with compressed air: combine, construction machinery etc.

Product no
A35409

220	225	423	523	528	530	630	635	640	735	755i	760i	860i	e5
Compatible				Adaptable				Incompatible					

Pressure washer

Powerful pressure washer with 65 foot hose reel; easy to take anywhere with the Avant. Creates maximum 8 gal/min water flow and 2900 PSI pressure. Can be connected directly to a water hose or a barrel.
Can suck water via inlet hose from as much as 10 feet below the level where the unit is. This is a very useful feature when taking water from a tank, reservoir, lake etc.



- Powerful washer with high max. water flow and pressure
- Can be connected directly to tap, or with the inlet hose take water from as much as 10 ft below ground level
- Equipped with 65 foot hose reel and washing gun

Max. water flow	Product no
8 gal/min at 2900 PSI	A35411

220	225	423	523	528	530	630	635	640	735	755i	760i	860i	e5
Compatible				Adaptable				Incompatible					



Winch

The Avant hydraulic winch enables towing of all kinds of objects (e.g. logs, poles, boats) from places where you cannot drive with the machine.

The winch is equipped with a safety net, 100 feet of cable and a towing hitch. It is powered by a powerful hydraulic motor and mounts on Avant's quick attach plate.

Use of the winch is simple, one person can easily handle it. The auxiliary hydraulics lever is switched to continuous flow from the driver's seat, which releases the cable drum so that the cable can be pulled out by hand. When the cable is attached to the desired object, operator returns to driver's seat and turns the auxiliary hydraulics lever into opposite direction and the winch begins to reel in the cable. The winch stops as soon as the auxiliary hydraulics control lever is released.

- **Powerful and compact hydraulic winch for various tasks**
- **The winch is mounted directly on Avant's quick attach plate, so you are also able to use the boom for lifting materials with the winch.**
- **Equipped with wire rope guiding rollers**



Max. Pulling power	2200 lb
Max. Reeling speed	7.5 ft/sec @ 5.3 gal/min (recommended oil flow)
Wire length	100 ft
Weight	231 lb
Product no	A36960

220	225	423	523	528	530	630	635	640	735	755i	760i	860i	e5





Tree shear

Avant tree shear is an efficient and useful tree cutter, intended for forest thinning, tree clearance and similar jobs where smaller trees need to be cut. The strong grapple takes a firm grip of the tree trunk and a hydraulic cylinder pushes the cutting blade against the trunk and cuts it. The tree is then easy and fast to move away with Avant. If needed, the cutting blade can be turned 180 degrees to point backwards. This means it doesn't cut and the unit can be used as a grapple only.

- **Powerful tree cutter for max. 7.5 in diameter trees**
- **Excellent tool for forest thinning, tree clearing**
- **Thanks to the strong grapple the tree is easy to take away with Avant**
- **Can also be used as a grapple only, by turning the cutting blade to point backwards**

Tree diameter	max. 7.5 in
Grapple opening	30.3 in
Weight	243 lb
Product no	A3583I



220	225	423	523	528	530	630	635	640	735	755i	760i	860i	e5



Compatible



Adaptable



Incompatible



Log grab, heavy duty

A strong log grab for customers who need to move tree trunks, logs etc. often. The grab takes a firm grip on the wood and the lower tines are also better formed for grabbing bigger tree trunks.

- **Heavy duty design allows grabbing of larger logs**
- **Grabbing and transporting of bigger stones and similar objects also possible**



Width	33.3 in
Height	39.0 in
Weight	396 lb
Product no	A415691

220	225	423	523	528	530	630	635	640	735	755i	760i	860i	e5





Log grab

The Avant log grab mounts on Avant pallet fork. With the log grab you can lift and transport single logs or smaller timber bundles. The grab is equipped with a powerful hydraulic cylinder and can therefore also lift bigger stones, as well as branches, fence poles and similar objects.

- **Easy mounting on pallet fork**
- **Basic attachment for fencing and forest work**
- **Grabbing and transporting of stones and similar objects also possible**
- **Must order both log grab and desired pallet fork**

Max. diameter	Min. diameter	Weight
35.4 in	7.0 in	110 lb

Product no	Description
A33503	Log grab
A21047	33.5" pallet fork
A21039	43.3" pallet fork
A36589	47.2" pallet fork



220	225	423	523	528	530	630	635	640	735	755i	760i	860i	e5



Compatible



Adaptable



Incompatible



Timber grab

Timber grab is an attachment that allows you to grab tree trunks, branches, wood waste and transport them both lengthwise and crosswise. This makes it possible to pass through narrow places also with long logs and enables loading on trailer or on a pile in any direction. Timber grab is available either with a hydraulic rotator or as freely rotating version. The grab with hydraulic rotator is equipped with an electric solenoid valve for selection between grab opening/closing and rotator, operated from the driver's seat.

- Available with hydraulic rotator
- Grapple opening 48.1 inches
- Versatile grab for transporting and loading of tree trunks, branches and debris
- Rotating grab requires attachment control switch pack



Option:
Arborist kit A427744

Lock valve, mounting kit, on grab cylinder A436627

Rotation type	Freely rotating	Hydraulic rotation
Grapple opening diameter	48.1 in	48.1 in
Grip area	1.72 ft ²	1.72 ft ²
Weight	255 lb	300 lb
Product no	A37457	A37456

The optional attachment control switch pack is recommended with timber grab with hydraulic rotator (selection between grab opening/closing and rotator with electric solenoid valve).

220	225	423	523	528	530	630	635	640	735	755i	760i	860i	e5



New

Tree removal



Timber grab HD

The heavy duty timber grab is equipped with a stronger boom and hydraulic rotator and larger grapple. It is intended especially for Avant 700 and 800 series. The arborist kit which mounts on the boom is also standard feature. When cutting a tree you can push the tree down with it if necessary, instead of pushing by hand. It is also possible to attach a rope on the bracket on the kit, which enables towing the logs by pulling them with the loader.

- HD grab with stronger boom and rotator and larger grapple
- Arborist kit as standard
- Intended especially for 700 and 800 series

Rotation type	Hydraulic
Grapple opening diameter	52.8 in
Grip area	2.15 ft²
Weight	620 lb
Product no	A438973

Mounting on loader's quick attach plate

Rotation type	No rotation	Hydraulic
Grapple opening diameter	52.8 in	52.8 in
Grip area	2.15 ft²	2.15 ft²
Weight	355 lb	465 lb
Product no	A436473	A437203

The optional Opticontrol is recommended with grab with hydraulic rotator, for operating the grab opening/closing and rotation (requires also 6 or 8 function joystick on the loader).



There are also two timber grab models which mount directly on the attachment coupling plate of the loader: one with hydraulic rotator and one without rotator. They are equipped with the same grapple as the A438973 HD grab.

Model	220	225	423	523	528	530	630	635	640	735	755i	760i	860i	e5
with boom														
no boom														



Compatible



Adaptable



Incompatible



Root Grapple

The hydraulic root grapple is a strong and versatile attachment for handling of trees and roots etc.

The heavy duty design features plenty of clamping power ideal for loading and piling brush, logs, rocks and light demolition debris. Hydraulic cylinders and hoses & fittings are well protected against falling debris.

- **Versatile hydraulic grapple for tree and root removal**
- **Three models available: 35.4 inch and 39.4 inch wide with single grapple, 51.2 inch wide with two grapples**



Width	Weight	Product no
35.4 in	291 lb	A440857
39.4 in	265 lb	A429058
51.2 in	405 lb	A37537

220	225	423	523	528	530	630	635	640	735	755i	760i	860i	e5





Stump grinder

Avant stump grinder is an efficient and easy to operate tree stump remover. The cutting disc is mounted crosswise in relation to the loader, which means it throws the wood waste to the right side – the waste doesn't fly on the operator or the loader. In addition, the stump grinder is equipped with a protective rubber cover which prevents the wood from flying around.

Grinding happens by moving the grinder forward and backward which means easy control with the drive pedals of the loader – or with the tilt movement of the quick attach plate, and the sideways mounting of the cutting disc guarantees excellent visibility to the working area. Cutting teeth have three cutting edges: once a tooth becomes blunt, its fastening bolt is easy to open and turn the tooth so that a sharp cutting edge comes into use.

- Equipped with ø 21.3 in cutting disc with 20 pcs replaceable teeth
- Teeth have three cutting edges – once a tooth becomes blunt it can be turned to get a new sharp cutting edge
- Excellent visibility to the work area, easy to operate
- Rubber damper on the quick attach bracket minimizes vibrations to the loader and makes working smoother



Cutting disc diameter	21.3 in
Number of teeth	20 pcs
Width	33.1 in
Height	36.2 in
Length	24.8 in
Weight	385 lb
Product no	A438282

220	225	423	523	528	530	630	635	640	735	755i	760i	860i	e5



Compatible



Adaptable



Incompatible

Tilt adapter

Avant tilt adapter is mounted between the attachment and the loader's attachment coupling plate. With it the attachment can be tilted sideways, and makes it possible to:

- Make different forms to the ground with a bucket or leveller
- Keep pallet fork level when you are driving on surfaces with gradient
- Load pallets that are on uneven ground
- Level ground on uneven surfaces
- With the 90 degree tilt adapter rotate the attachment as much as 90°

There are two tilt adapters available:

- Tilt adapter with max. 12,5 degree tilting in both directions. It is intended for buckets, leveller and pallet fork – for jobs where tilting is a must but the tilting angle doesn't have to be big
- Tilt adapter with max. 90 degree rotation, or 45 degree tilting in both directions. It is useful in applications where the attachment needs to be rotated more in order to get the job done: with grabbing tool (rotating of barrels etc.), rock drill, artificial turf attachment (to fit through narrow doors) etc.

The hydraulic cylinder of the 90 degree tilt adapter can be mounted in two different positions, which gives two tilting angles: either 45° tilting in both directions, or 90° rotation in one direction. The tilt adapter is intended mainly for non-hydraulically operated attachments, but with the optional second auxiliary hydraulics outlet in the front it is possible to mount also hydraulically driven attachments like a 4 in 1 bucket, pallet fork with hydraulic fork adjustment, grabbing tool, artificial turf attachment and rock drill at the same time.

- **Makes it possible to tilt the attachment sideways and e.g. grade the ground with a bucket or leveller, or load pallets on uneven ground with pallet fork**
- **Mounts between the attachment and the quick attach plate of the loader**
- **Two models: with max. $\pm 12,5^\circ$ tilting or with max. $90^\circ / \pm 45^\circ$ rotation**



Max. tilt	+/- 12,5 deg	90°, or $\pm 45^\circ$
Weight	143 lb	187 lb
Product no	A34148	A36505

220	225	423	523	528	530	630	635	640	735	755i	760i	860i	e5

Attachment rotator

Attachment rotator makes it possible to rotate the attachment 360° continuously (endlessly) in both directions. This is useful in many jobs, for instance when emptying boxes which need to be turned upside down.



- **Hydraulic rotator makes it possible to empty boxes by turning them upside down, lifting of pallets on uneven ground, turning the attachment 360° etc.**
- **Mounts between the attachment and the quick attach plate of the loader**

Rotation	360° continuous
Rated max load	2650 lb
Weight	210 lb
Product no	A424406

220	225	423	523	528	530	630	635	640	735	755i	760i	860i	e5



Hydraulic side shift adapter

The hydraulic side shift adapter offers easy, stepless side shift of attachment, operated from the driver's seat. The solid and robust design features strong sliding guides which can also be lubricated. The quick attach plate on the adapter can be mounted in three different positions: on the left or on the right or in the middle of the adapter. This gives three different side shift options: 19.7 in side shift to the right or to the left, or 9.8 in side shift in both directions. If a hydraulic attachment – 4 in 1 bucket, flail mower, cold planer etc. – is mounted on the side shift adapter, the loader must be equipped with the optional second auxiliary hydraulics outlet in the front, so that the attachment hoses are mounted on the multi connector and the side shift adapter hoses on the optional second outlet.



- **Easy, stepless hydraulic side shift of the attachment, operated from the driver's seat**
- **Side shift max. 19.7 in to the right or the left, or 9.8 in in both directions, depending on the mounting of the adapter's attachment plate**
- **Max. load 2200 lb**

Width	50 in
Height	17.1 in
Length	8.6 in
Weight	255 lb
Product no	A37235

220	225	423	523	528	530	630	635	640	735	755i	760i	860i	e5

Side shift adapter

Side shift adapter is a rigid adapter plate which mounts on the loader's attachment coupling plate. It is equipped with two quick attach brackets, side by side, for mounting the attachment. This means that the attachment can be mounted on the adapter in two different positions:

- with side shift: the attachment is 23.6 in to the side from the centerline of the loader's attachment coupling plate
- without side shift: the attachment is mounted on the brackets which are against the loader's attachment coupling plate



- **Moves attachment 23.6 in to the side from centerline**
- **Two models available: 23.6 in side shift to the right or to the left**

Side shift adapter	23.6 in, right	23.6 in, left
Width	45.3 in	45.3 in
Height	10.4 in	10.4 in
Length	6.2 in	6.2 in
Weight	100 lb	100 lb
Product no	A37097	A37166

220	225	423	523	528	530	630	635	640	735	755i	760i	860i	e5



Compatible



Adaptable



Incompatible

Disclaimer for Avant adapters

The following Avant adapters presented in this catalogue: 3 point hitch adapter A36433; skid steer adapters A437407, A437144, A435531 and A442082 are suitable for use with Avant multi purpose loaders only. For compatibility with Avant loader model please contact your Avant dealer or consult the corresponding Operator's Manual of the attachment.

The adapter is mounted on the Avant loader like other attachments, between the attachment coupling plate of the loader and the attachment of the third party. The Avant adapters are suitable for temporary use, to lift or transport third party attachments occasionally, short distances. The Adapters are not designed for any other use than specified and must not be used for any other purposes than what they are intended for.

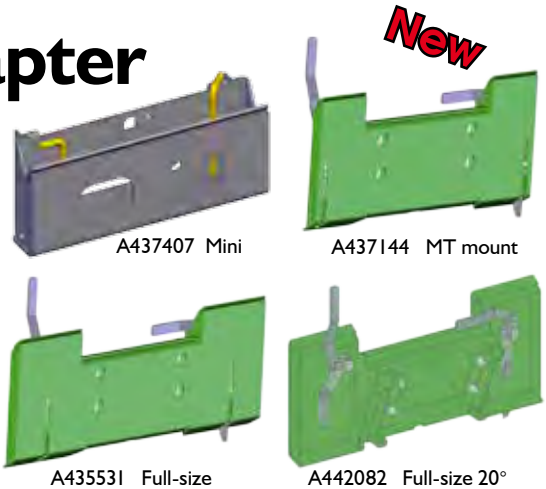
Avant Tecno Oy is not responsible for use or misuse of any third party attachments that are used with Avant adapters. The use of the third party attachments with Avant adapters A36433, A437407, A437144, A435531 and A442082 is done at your own discretion and risk, and with agreement that you will be solely responsible for any personal injuries or material damage.

Skid steer adapter

There are four adapter plates with different widths available which allow mounting of skid steer loader attachments on Avant.

Model	Product no
Mini	A437407
MT mount	A437144
Full-size	A435531
Full-size 20°	A442082

* increases dumping angle by 20°



220	225	423	523	528	530	630	635	640	735	755i	760i	860i	e5

Adapter plate/attach bracket

Avant offers a variety of original adapter plates, which can be welded directly onto:

- An attachment you have developed yourself.
- An object you wish to lift securely with Avant

All original Avant adapter plates will fit, which saves a lot of time consuming measuring and adjusting work from you.

Model	Product no
Quick attach brackets,	A31566
Heavy duty quick attach brackets	A37015
Adapter plate 0.4 in	A2471
Adapter plate 0.8 in	A2472



220	225	423	523	528	530	630	635	640	735	755i	760i	860i	e5

Multi Connector System



Multi connector
Pressure-Return
65251



Multi connector
Pressure-Tank line
65371



Multi connector
Pressure-Return-Tank line
65250



Multi connector
Loader side
A34366

Options



Flat Faced coupling kit to connect
skidsteer Hydraulics to Avant Multi-
connector System
CE565-9656



Adapter cable for attachment's
multi connector
A36679



Multi connector
Parking on attachment
A418927

Drawbar

The rigid drawbar is 40 inch long and equipped with a trailer coupling for ball hitch. It mounts on the attachment's quick attach plate and enables towing of the attachment with the loader. This can be useful with certain attachments, like the roller compactor. Height of the drawbar can be adjusted so that it fits on all models; both on Avant 200 series with lower ball hitch and on bigger Avant models. The loader must be equipped with the 2 in ball hitch.



- **Rigid drawbar, equipped with trailer coupling for ball hitch**
- **Mounts on the attachment's quick attach plate – enables towing of the attachment with the loader**
- **Manual height adjustment, for ball hitches on different Avant models**

Length	40 in
Weight	55 lb
Product no	A37481

220	225	423	523	528	530	630	635	640	735	755i	760i	860i	e5



Compatible



Adaptable



Incompatible

Hydraulic manifolds to attachment multi connector

There are various hydraulic manifolds with different functions available which mount on the attachment multi connector:

Options

Flow divider valve

This manifold reduces the auxiliary hydraulics oil flow from the loader to the attachment by 50 %. This means that the attachment movement speed is 50 % slower, which can be useful in situations where a slower attachment speed is required, without reducing loader engine revs too much.

Product no. A421684



2-way adjustable pressure relief valve

The pressure relief valve releases the excessive pressure which can be generated in the attachment if it is mishandled by e. g. pulling it too much with the loader. The opening pressure of the relief valve can be adjusted. It controls both the pressure from the loader to the attachment and the pressure in the attachment. In addition, there is a third, feed/tank line which is useful when the attachment is equipped with hydraulic cylinder(s).

Product no. A422104



Pressure gauges

The hydraulic pressures in the attachment, in both lines, are easy to check with these two pressure gauges. They mount on the A422104 2-way adjustable pressure relief valve. A422104 is not included.

Product no. A422475



Double check valve

The double check valve is a lock valve which prevents the movements of the attachment's hydraulic cylinder, in both directions, when the attachment is not in operation. This can be useful for instance with the log grab when handling delicate objects like kerb stones etc. – the lock valve makes sure that the grab cannot open.

Product no. A422968



Filter kits



Options

Product no:	Description
U00001	50 Hour Service Kit 420/423/523
U00002	50 Hour Service Kit 528/530
U00003	50 Hour Service Kit 630/635/640
U00004	50 Hour Service Kit 745/750
U00005	50 Hour Service Kit 755i/760i/860i
U00006	50 Hour Service Kit 220/225/225 LPG
A46683	200 Hour Service Kit 220
A420536	200 Hour Service Kit 225/225 LPG
A416943	200 Hour Service Kit 420/520 (for SN's after 70169)
A425525	400 Hour Service Kit 423/523
A48036*	200/400 Hour Service Kit 528/530
A410961*	200/400 Hour Service Kit 630/635/640
A410784*	200/400 Hour Service Kit 745/750
A418900	400 Hour Service Kit 755i/760i/860i

* Any machine manufactured after 1/1/2015 has a service interval of 400 hours

Wheels & Tires



Wheel, complete (tire + rim)

Product no:	Size	Tread	Bolt pattern	220	225	423	523	528	530	630	635	640	735	755i	760i	860i
66231	20 x 8.00-10 TR	4	4	std	std											
66252	20 x 8.00-10 GR	6	4	std	std											
65412	5.00 x 10 TR	1	6			y										
A434525	5.70 x 12 TR	2	5			y										
65046	23 x 8.50-12 TR	2	6			std										
65045	23 x 8.50-12 GR	6	6			std										
65995	23 x 8.50-12 TR	2	5				y	y	y							
65994	23 x 8.50-12 GR	6	5				y	y	y							
65048	23 x 10.50-12 TR	4	6			y										
65047	23 x 10.50-12 GR	6	6			y										
65997	23 x 10.50-12 TR	4	5				std	std	std							
65996	23 x 10.50-12 GR	6	5				std	std	std							
65212	26 x 12.00-12 GR	6	10				y	y	y	std	std	std	std	std		
65739	26 x 12.00-12 TR	4	10				y	y	y	std	std	std				
65414	27 x 8.50-15 TR	2	10				y	y	y	y	y	y	y	y	y	
65224	320/60-12, HD-wheel TR	4	10				y	y	y	y	y	y	std	std		
65787	26.5 x 14.00-12 GR	3	10				y	y	y	y	y	y				
65506	320/55-15 TR	4	10										y	y	y	
65459	320/55-15 GR	5	10										y	y	y	
65958	400/50-15 TR	4	10												std	
66257	400/50-15 GR	6	10												std	
65959	31 x 15.50-15 GR	3	10												y	
66505	380/55-17 TR	4	10													y
A439290	380/55-17 GR	4	10													y

Tire tread patterns



1



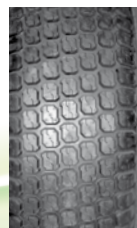
2



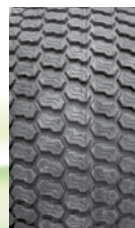
3



4



5



6

Options in alphabetical order

Adapter cable 12V.....	45	Lifting kit, for machines with ROPS frame..	43
Adapter cable for attachment control switch pack..	28	Lifting kit, for machines with cab LX/DLX..	43
Adapter plate/attach bracket.....	164	Light rear bumper.....	31
Adapter plug 12V.....	45	Linex panels.....	38
Anti slip valve.....	30	Loading ramps.....	44
Attachment coupling plate in the rear.....	32	Mudguards rear.....	40
Attachment rotator.....	162	Multi Connector System.....	165
Auxiliary hydraulics outlet in the rear, single acting..	28	Opticontrol.....	27
Auxiliary hydraulics outlet in the rear, double acting..	29	Rapid battery charger, e5.....	45
Back weight.....	30	Rear carrier.....	42
Battery pack e5.....	42	Rear guard.....	34
Beacon.....	35	Rear side weights 176 lbs.....	30
Beacon light bar.....	35	Rear side weights 400 lbs.....	31
Boom floating, machine without self levelling..	25	Rear wall.....	36
Boom floating, machine with self levelling..	26	Receiver hitch.....	33
Boom self levelling.....	26	Road traffic light kit.....	35
Cab L.....	36	Second auxiliary hydraulics outlet in the front..	29
Cab LX.....	37	Side shift adapter.....	163
Cab DLX.....	37	Skid steer adapter.....	164
Cab GT.....	38	Smooth drive (boom suspension).....	26
Control switch pack for rear mounted attachments..	28	Snow chains.....	39
Drawbar.....	165	Suspension seat.....	40
Drive release valve.....	29	Telescopic boom.....	25
Engine heater.....	41	Tie down bracket on wheel hub.....	42
Exhaust purifier.....	41	Tie down bracket in the rear/on the sides..	43
Filter kits.....	167	Tilt adapter.....	162
Front window.....	36	Tire options, on a new machine.....	22
Full suspension seat.....	40	Tool box.....	33
Hand drive controls.....	41	Trailer coupling.....	33
HD cover plates.....	39	Transport cover.....	44
Hydraulic attachment coupling plate.....	26	Weather cover.....	44
Hydraulic manifolds to attachment multi connector..	166	Wheels & Tires.....	168
Hydraulic rear lift.....	32	Wheel weight.....	31
Hydraulic side shift adapter.....	163	Work light kit, on ROPS frame.....	34
Joystick 6 functions.....	27	Work light kit, on cab LX.....	34
Joystick 8 functions.....	27		

Attachments in alphabetical order

3 point hitch adapter.....	143	Dozer blade 2000/2500.....	65
4 in 1 bucket.....	50	Drum type concrete mixer.....	124
All-round grapple.....	126	Edge trimmer.....	96
Artificial turf attachment.....	77	Feed mover screw.....	132
Artificial turf maintenance brush.....	78	Feeding table cleaning blade.....	130
Asphalt grinder.....	122	Flail mower.....	90
Asphalt spreader.....	121	Flail mower S30.....	93
Auger.....	118	Flail mower with hydraulic side arm.....	91
Backhoe 170.....	111	Flipper bucket.....	68
Backhoe 210.....	112	Front cultivator.....	145
Backhoe 260.....	113	Front rake.....	104
Backhoe 260 with remote control.....	114	General bucket.....	46
Bale handler.....	136	Grabbing tool.....	110
Bale fork.....	137	Grain/flour dispenser bucket.....	140
Ball hitch on front.....	61	Grain/flour dispenser bucket XL.....	141
Bedding distributor bucket.....	139	Grapple bucket.....	53
Beehive mover.....	62	Heavy duty general bucket.....	47
Big bag transporter.....	147	High tip bucket.....	51
Bucket broom.....	75	High pressure washer.....	76
Carousel broom.....	134	Horse arena harrow.....	146
Centrifugal sand/salt spreader.....	80	Horse manure collector.....	144
Collecting broom 1100.....	73	Hydraulic breaker.....	120
Collecting broom 1500.....	74	Hydraulic side arm S30.....	92
Collecting lawn mower 1200.....	87	Hydraulic trailer hitch.....	61
Collecting lawn mower 1500.....	88	Ice rink scraper blade.....	70
Compressor.....	149	Jib boom.....	59
Concrete mixing bucket.....	123	Lawn aerator.....	97
Cutting bar.....	89	Lawn mower 1200.....	85
Cutting bar S30.....	93	Lawn mower 1500.....	86
Demolition grapple bucket.....	54	Leguan 50 Access platform.....	83
Disc scraper.....	125	Leveller HD.....	102
Dozer blade 1400.....	64	Levelling bucket.....	55

Attachments in alphabetical order

Light material bucket.....	48	Skip bucket.....	58
Log grab.....	153	Snow blower.....	71
Log grab, heavy duty.....	152	Snow plow.....	66
Manure fork.....	140	Stone collecting bucket.....	148
Mechanical side arm S30.....	92	Stone grab.....	109
Mini digger.....	115	Stump grinder.....	157
Mounting kit for stone installation clamp..	108	Submersible pump.....	126
Mulcher CRI 400.....	106	Telescoping jib boom.....	60
Multi function drive unit.....	116	Tipping trailer.....	84
Multi function drive unit attachments.....	117	Timber grab.....	154
Multi function drive unit S30.....	95	Timber grab HD.....	155
Pallet fork.....	56	Towable sand/salt spreader.....	81
Pallet fork with side shift.....	57	Tree shear.....	151
Power rake.....	100	Trencher.....	119
Pressure washer.....	149	V-Snow blade.....	67
Push broom.....	142	Vacuum brush.....	82
Ripper.....	105	Vibrating plate.....	124
Roller compactor.....	103	Weed brush.....	98
Root Grapple.....	156	Winch.....	150
Rotary broom.....	72	XL high tip bucket.....	52
Rotary harrow.....	101	XL Light material bucket.....	49
Rotary hoe.....	99	XL silage grab.....	128
Round bale grab.....	135	Zoom snow plow.....	69
Round bale splitter.....	138		
Rotary hedge cutter S30.....	94		
Sand/salt spreader.....	79		
Screening bucket.....	107		
Silage block cutter.....	133		
Silage dispenser.....	131		
Silage dozer blade.....	129		
Silage fork.....	127		
Site toolbox.....	63		



AVANT[®]

Avant Tecno USA Inc.

3020 Malmo Drive

Arlington Heights, IL 60005

phone 855-282-6887

www.avanttecnousa.com

e-mail: sales@avanttecnousa.com

AVANT has a policy of continuing improvement,
and retains the right to change specifications without notice.
© 2020 AVANT Tecno Oy. All rights reserved.